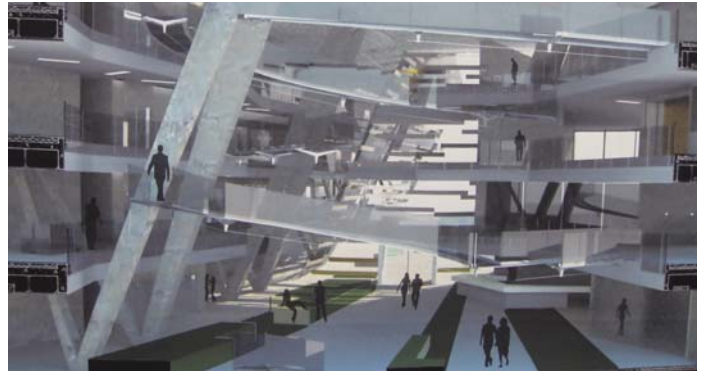


Headlines

- **Planning Fair Success**
- **Student Ugandan Experience**


Jan/Feb 2010
Contents
1. RTPI Planning Fair
Student News
2. Student Ugandan Experience
3. Planning Pecha Kucha
4. RIBA Travel Scholarship
5. Architecture TRADA winners
Staff News
6. Susan Thompson's visit
7. From Park to Club
8. Professor Shucksmith's rural development
9. Professor Davoudi speaks at climate change symposium
10. Dr Thompson's literary appearance
11. Dr Hamza awarded CIP with +3
12. Climate Change Lecture
1. Planning fair a success once again

 by [Dr John Sturzaker](#)

Wednesday 3rd February saw over 60 students and young planners attend the annual RTPI North East/Newcastle University planning fair, to learn more about planning as a career and meet some of the organisations employing planners in the North East. The event began with a brief introduction from Tim Townshend, Director of Planning and Urban Design in the School of Architecture, Planning and Landscape at the University. This was followed by a presentation from the RTPI's Senior Membership & Database Officer Philip Woodward, who spoke about the Assessment of Professional Competence (APC), which is now part of the process for becoming a member of the Institute. Information about the APC can be found on the RTPI website, at http://www.rtpi.org.uk/join_the_rtpi/. The advice to those considering membership of the RTPI is to start thinking about it now, don't leave it until the last minute!

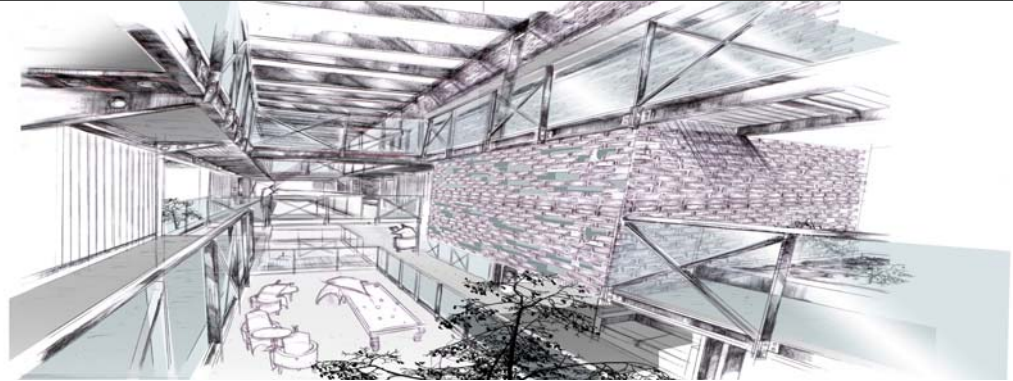
Then the real business of the fair began, with the students taking the opportunity to talk to employers from across the North East (and elsewhere, in the case of the Yorkshire Dales National Park Authority) about jobs in planning. Some of the employers attending are currently recruiting, or are planning to do so soon, others had come along to maintain links with possible future employees when the economic situation has improved. Several of the employers' representatives had been recruited as a result of previous fairs, and all those employers attending were impressed by the attitude of the students, with many bringing along CVs and a positive attitude, aware of the highly competitive jobs market they may soon be entering.

The event was a great success, and next year's planning fair has already been arranged for 2nd February 2010 – put it in your diaries now!



RTPI North East would like to thank Newcastle University for hosting the event, and all those employers who came along – this event would be impossible to run without your support.

Images from the Fair can be seen throughout the newsletter and at www.ncl.ac.uk/apl/gallery/RTPI_CareersFair


Jan/Feb 2010

2. Mbarara Presentation

Architecture students gave a presentation to interested staff and students about their experiences volunteering in Uganda on Monday 8th Feb.

Between June and August 2009 a group of students from the Architecture and Civil Engineering departments at Newcastle University raised funds and travelled to Mbarara in Uganda to carry out a voluntary construction project: building dormitory accommodation for a local children's AIDS orphanage. The group surveyed the site and surroundings, and finalised the designs through talking to the clients and local community.

The group of 12 students lived in the community for the entirety of the project, getting to know the villagers and experiencing their way of life. The six weeks were used to design and begin the first phase of construction for a much needed shelter for children orphaned by AIDS, also to be used for visitor accommodation whilst attending courses on AIDS awareness. This development was only the start of a project that endeavors to improve the quality of life for children in Uganda; over the next few years the project hopes to continue to create a children's village to include accommodation, kitchen areas and play areas.

The presentation can be viewed online at www.ncl.ac.uk/apl/engagement/activities/communityprojects.htm.

3. Planning Pecha Kucha

The RTPI North East, Planning Aid North and Newcastle University Plansoc teamed up to present an evening of "Pecha Kucha" presentations and discussions to hear about different careers in planning, from the perspective of four young planners.

Pecha Kucha is a simple presentation format where 20 images are shown as a slide show, each for 20 seconds. The images forward automatically and the speaker talks along to the images. Hard work for the speaker - very entertaining for the audience! The format is a great ice breaker and led to a very energetic question and answer session.

Thank you to Newcastle University Plansoc for providing the refreshments and Sarah Allison, Chris Anderson, Rachael O'keefe and Joseph Ridgeon for speaking at the event.

4. Nomination for RIBA Norman Foster Travel Scholarship 2010

Shona Scales, B Arch stage 6, has been nominated by the School for this prestigious scholarship. Her proposal 'Festival Architecture: Mapping the Ephemeral' takes forward her recently completed study with Dr Peter Kellett which explored 'Temporary Architectures' as part of the B Arch Linked Research options. Her plan is to visit and document the use of space and resources in six festivals in South America and Asia. She will be competing with almost 100

nominations from other RIBA validated schools of architecture around the world.

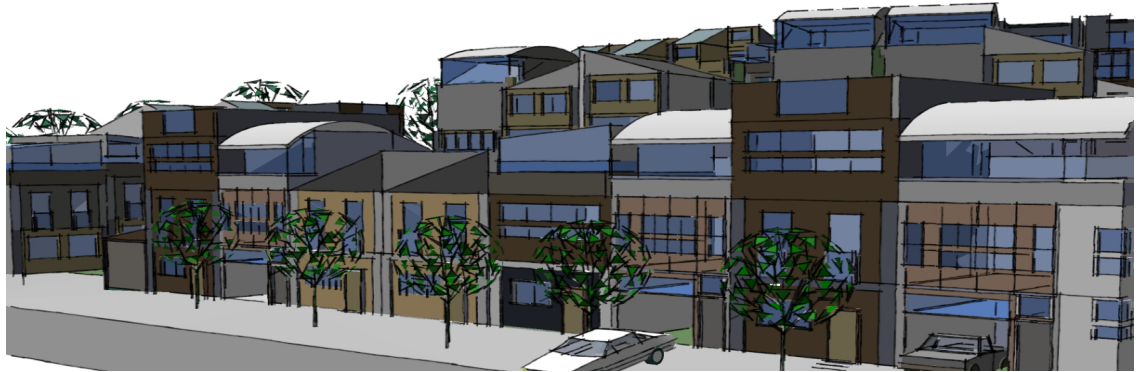
5. Architecture TRADA winners

The winner's of the Stage 3 North East Timber Trade Association competition (project lead [Dr Neveen Hamza](#)) have been announced, with very flattering comments from the judges. The Structural Timber Awards 2009 called for designs for a temporary pavilion, to be located in Jesmond Dene, a park that has important historical significance for the City of Newcastle.

The judges said: "Exhibition pavilions have become a touchstone for avant-garde architecture and timber is a particularly suitable material, with its lightweight strength and stiffness, low environmental impact, amenability to prefabrication and potential for re-use. The Newcastle University School of Architecture is commended for the manner in which this understanding is disseminated to its students, as well as for the professionalism of the entries."



Dr Hamza with the student winners


Jan/Feb 2010
6. Susan Thompson's visit to SAPL

Associate Professor Susan Thompson's visit to the School from 7-30th Oct went extremely well. Susan is a member of the City Future's Research Centre, School of Built Environment, University of New South Wales, Sydney. Susan is developing a new initiative which aims to bring the disciplines of built environment and health together in a new teaching programme. The NSW Department of Health will provide funding of \$1.5m over five years for the establishment of the Healthy Built Environments Program (HBEP). The Program will foster interdisciplinary research, deliver innovative education and workforce development, and provide leadership on health and the built environment. Susan's visit aimed to foster a closer working relationship with herself and [Tim Townshend](#) and she has asked Tim to be a critical friend for the new Health Built Environments Programme as well as preparing the ground for other joint initiatives and publications

7. From Park to Club

[Tim Townshend](#) has teamed up with Professor Marion Roberts of the University of Westminster (principal investigator) on a project funded by Joseph Rowntree Foundation 'From Park to Club: Youth, Alcohol and Place'. The project will run for the next 18 months and aims to investigate the influence of local variation in youth drinking practices, with regard to opportunities, regulation and cultural capital. The study is designed to contrast the experiences of three age groups: 'adolescents' aged between 15 and 16 and two groups of 'young adults', the first aged between 18 and 19 and the second between 22 and 24 in two locations. The two locations are based in regions of the country at different ends of the spectrum of alcohol related harm, the south-east and the north-east. The team hope that the findings from the research may be used to inform central government policies towards planning, alcohol policy and criminal justice and will also be useful for local policy makers in planning, licensing, enforcement, youth services and health.

The paper asks whether the concept of Integrated Rural Development still has any meaning in the context of the new rural governance, and seeks to relate this to concepts of neo-endogenous rural development and collaborative planning. The paper concludes by suggesting that initiatives such as the EU's LEADER programme might be recast explicitly as trans-national experiments in doing 'disintegrated rural development', addressing the challenges of neo-endogenous rural development; multi-scalar governance; an enabling, generative state; and the transformation of mainstream policies.

During January, Professor Shucksmith was invited to Brussels by the European Commission to contribute to a discussion of local development initiatives. Mark also facilitated a discussion between Matthew Taylor MP and key stakeholders about developing policies for affordable rural housing in Northumberland.



8. In January, Sociologia Ruralis began its 50th Anniversary volume with a paper by [Professor Mark Shucksmith](#) entitled "Disintegrated Rural Development: neo-endogenous rural development, planning and place-shaping in diffused power contexts".



Architecture, Planning and Landscape Newsletter

Jan/Feb 2010

9. [Professor Simin Davoudi](#) was invited to speak at a symposium on Anglo-German Perspectives on Climate Change at the Royal Institution in London. The symposium was organised jointly by the RTPI and ARL (the German Academy for Spatial Planning and Regional Research). Professor Davoudi was also invited to speak in one of the RTPI North CPD seminars on climate change, addressing an audience of planning practitioners in the region.



Exploration Architecture, will both deliver lectures. The event will conclude with a debate of the issues raised and a drinks reception at the Hatton Gallery.

For more details please visit the School website, www.ncl.ac.uk/apl/about/events/item/Climate-Change-Debate.

10. [Dr Ian Thompson](#), Reader in Landscape Architecture, is launching his new book 'The English Lakes - A History' at the Words on the Water Literary Festival in Keswick on Sunday 7 March. The book charts the evolution of the Lake District into the tourist attraction it is today and explains how many writers helped transform the public perception from 'horrid mountains' to 'vales of peace' long before its most famous resident, William Wordsworth, waxed lyrical about its beauty and seclusion. Dr Thompson says of his book: "There are books about the cultural traditions, and it's not one of those, neither is it a guidebook or a topographical study, although there are elements of these within it." "It's really about the cultural phenomenon of the Lake District as much as the place itself."

To view the full press release please visit www.ncl.ac.uk/press.office/press.release/item/from-horrid-mountains-to-major-tourist-attraction.

11. [Dr Neveen Hamza](#) has won a Collaborative Innovation Project (CIP) with +3 architects to build their capacity as a practice in environmental modelling in the design stage. The project is awarded £20,000. Dr Hamza also holds an award from the Centre for Education in the Built Environment on an exchange tutor scheme which takes place from January till June 2010. Dr Hamza will be collaborating with the Welsh School of Architecture to look into practices of integrating construction technology and sustainability in the design curriculum.

12. RIBA Climate Change Lecture

The RIBA and Newcastle University are hosting an afternoon conference around the theme of climate change and architecture on Thursday 11th March. The event will start at 2pm with a presentation from RIBA Education and then Steve Graham, Professor of Cities and Society at Newcastle University, and Michael Pawlyn, Director of

If you would like any further details about any news item featured in this edition please contact

anne.fry@ncl.ac.uk