

## System Restore

System Restore automatically tracks changes to your computer and creates restore points before major changes are to occur.

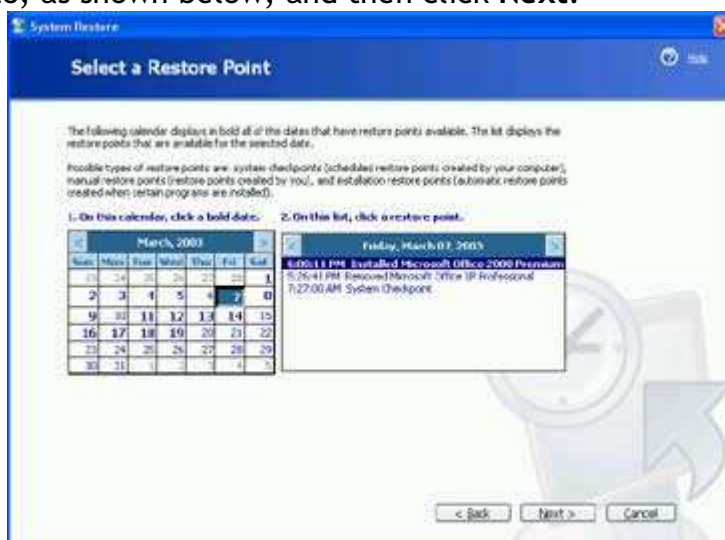
When you use System Restore, you can revert to a previous state without losing personal data including Word documents, e-mail settings and messages, and your Internet favorites list. System Restore won't lose any data you have stored in the My Documents, My Pictures, or My Music folders either.

To use the System Restore Wizard, make sure you're logged on as an administrator, and then follow these steps:

Click **Start**, point to **All Programs**, point to **Accessories**, point to **System Tools**, and then click **System Restore**.

On the Welcome screen, click **Restore my computer to an earlier time**, and then click **Next**.

On the **Select a Restore Point** page, select the date from the calendar that shows the point you'd like to restore to, as shown below, and then click **Next**.



On the **Confirm Restore Point Selection** page, verify that the correct restore point is chosen, and then close any open programs.

Click **Next** if you are ready to proceed or click **Back** to change the restore point.

The computer will shut down automatically and reboot. On reboot, you'll see the **Restoration Complete** page, and then click **OK**.

After reviewing the stability of your system, you can choose another restore point or undo this restoration. Just open System Restore and make the appropriate choice. After you use System Restore, you'll have an additional task, **Undo my last restoration**, on the System Restore Welcome page. Remember that you'll have to reinstall any programs that were installed after the restore point.

If System Restore doesn't work in Normal Mode, it might work in Safe Mode. To use System Restore in Safe Mode, press the F8 key during reboot and choose Safe Mode. When your computer starts in either Safe Mode or Normal Mode, System Restore can be used to capture a working previous state. System Restore can't be opened unless the system is bootable into one of these modes.