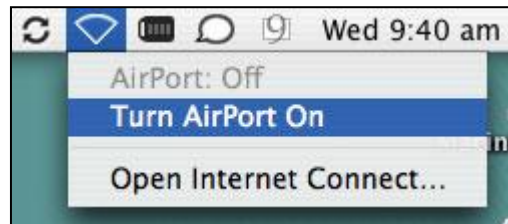
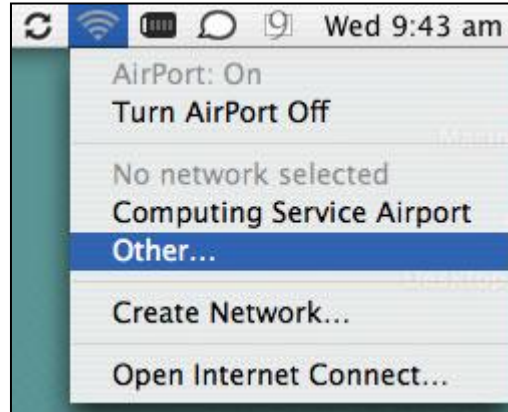


Using your Own Computer to Connect to the University Docking/Wireless ServiceMacintosh OS v10.2+ Step by Step InstructionsHow to use the Wireless Service (If you are not using Wireless go to the VPN instructions)

Switch AirPort on via the AirPort menu extra



Select "Other..." from the AirPort menu extra



Enter magpie as the Network Name and set the Wireless Security to None

Click on the OK button to join the network.

Connecting to the VPN (Needed for both Docking and Wireless)

Open Internet Connect, located in the Applications folder or the Network icon in the menu bar

Select "New VPN Connection Window" from the File menu and choose PPTP as the kind when asked.

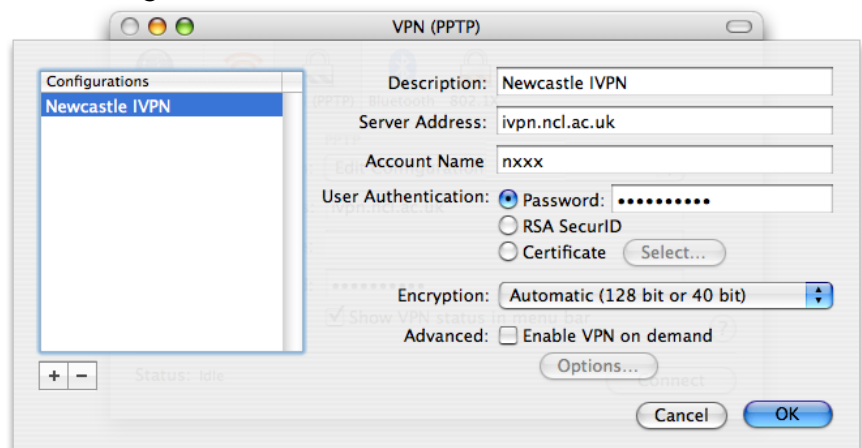
In the Configuration pull down select Edit Configuration

In "Server address" put:
ivpn.ncl.ac.uk

In "Account Name" put:
Your ISS Windows Logon Name
(ie a4368336)

In "Password" put:
Your ISS Windows Password

Click "OK".



This Adviser Guide is not intended as a user document.

To make a VPN connection

Open *Internet Connect*

Select **Newcastle IVPN** from the *Configuration* pull down

Fill in your credentials if missing

Click **Connect**

**Problems**

If you still have problems connecting your laptop, ISS have Network Connection Clinics in the Old Library Cluster room Monday-Friday 10am-4pm

If you believe there to be a fault with your network point in your room; then go to <http://www.ncl.ac.uk/accommodation/current/repairs/network-testing-booking/> and book a network tester.