

Windows Vista Step by Step Instructions

On your PC/Laptop

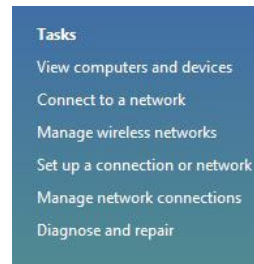
Click on Start -> Type "Network"

Select Network and Sharing Center



Configure your PC/Laptop for Wireless (If you are not using Wireless go to Page 2)

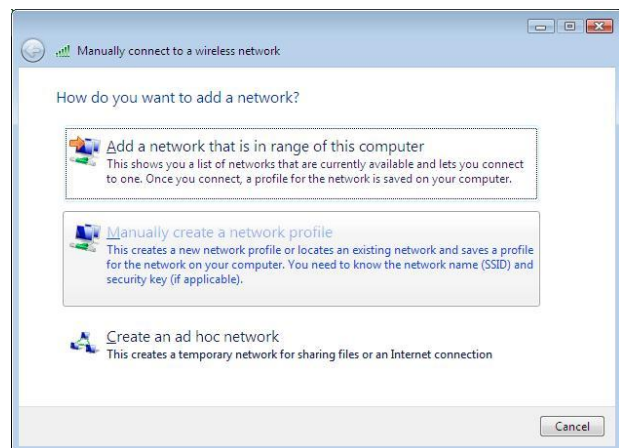
To create a Wireless connection click "Manage Wireless networks".



Click "Add"



Click "Manually create a network profile"



Enter the following details:-

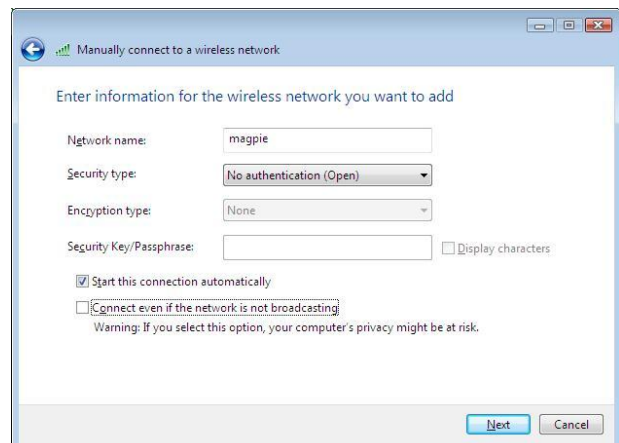
Network name: magpie

Security Type:
No authentication (open)

Encryption type: None

Tick the box for :
"Start this connection automatically"

Your settings should now look like this →



Click Next

Click Close

You now need to create the VPN Connection.

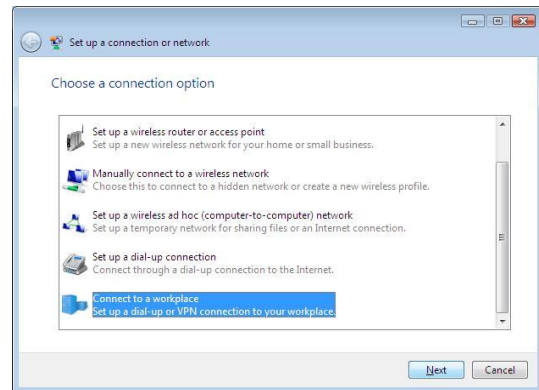
Setup VPN Connection (Needed for both Wireless and Docking)

Download the **VPN Setup Program** from <http://connect.ncl.ac.uk/students/#docking> or follow the instructions to setup the connection manually:-

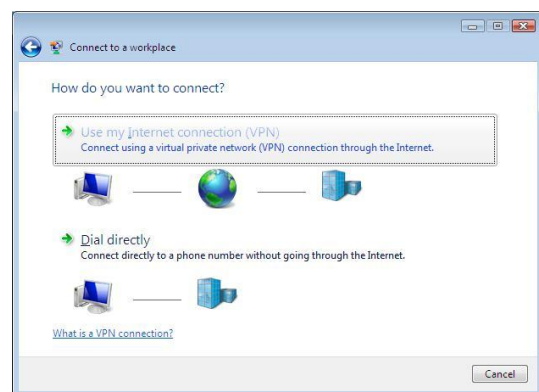
In the Network and Sharing center click on “Set up a connection or network”



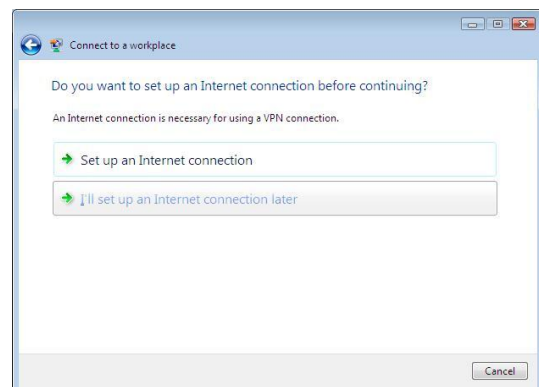
Click on “Connect to a workplace”



Select “Use my Internet connection (VPN)”



Select “I’ll set up an Internet connection later”



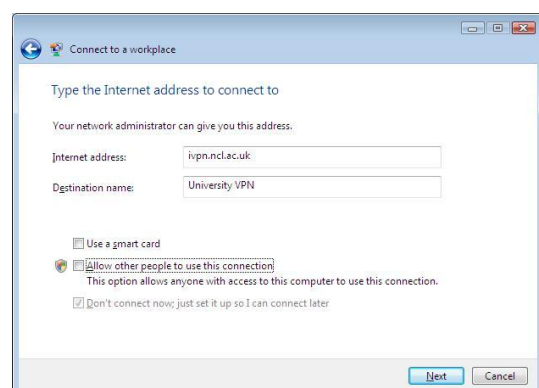
In Internet address put:-

ivpn.ncl.ac.uk

In Destination name put:-

University VPN

Click Next



In User name put:-

Your University login ID (i.e. a1234567)

In Password put:-

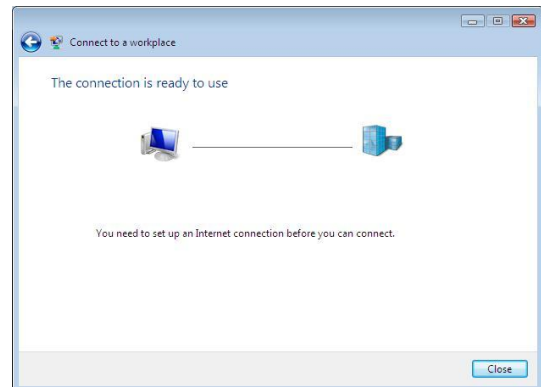
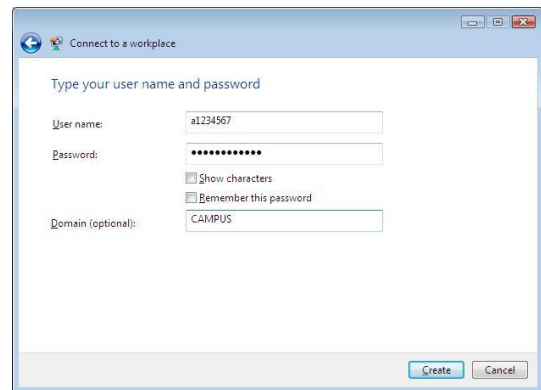
Your University password

In Domain put:-

CAMPUS

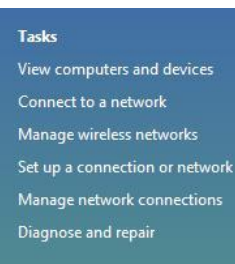
Click **Create**

Click **Close**

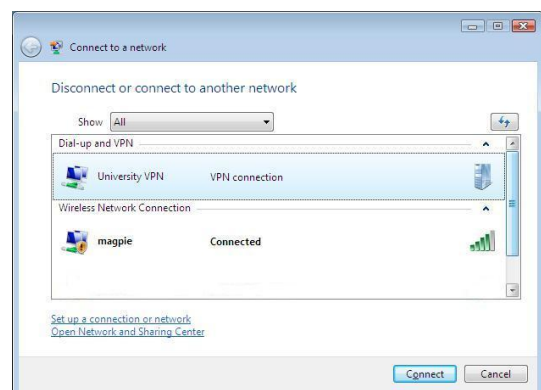


Connect to VPN (Needed for both Wireless and Docking)

In the Network and Sharing center click on Click **“Connect to a Network”**



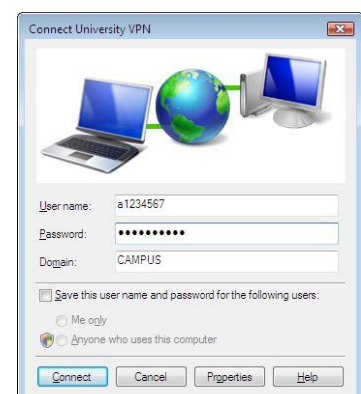
Click **“University VPN”**



Enter **your** University username and password

Domain = **“CAMPUS”**

Click **Connect.**



Common Problems

Error 800 :-

DHCP

Click on **Start** -> Type “**Network**”

Select **Network and Sharing Center**

Click **Manage network connections**

If you are using Docking (with a network cable) **Right click** on “**Local Area Connection**” and select “**Properties**”

If you are using Wireless; **Right click** on “**Wireless Connection**” and select “**Properties**”

Select **Internet Protocol Version 4 (TCP/IPv4)** then press the **Properties** button

Make sure the Following are selected:

- **Obtain an IP address automatically**
- **Obtain DNS Server address automatically**

Click **OK** then Click **OK** again

Firewalls

Certain Firewall block VPN connection so if you are having problems try temporarily turning off the firewall then trying to connect. Windows Firewall does not block VPN connections so you can always leave that one on.

Web Page Problems :-

Internet Explorer Reset

If you can connect but have problems with Internet Explorer crashing or certain pages not opening try Resetting Internet Explorer Settings back to default (Does not delete Favorites) :-

- Close Internet Explorer
- Click Vista **Start Button**
- Type inetcpl.cpl in the **search** box, and then press ENTER:

The **Internet Options** dialog box appears.

- Click the **Advanced** tab.
- Under **Reset Internet Explorer settings**, click **Reset**. Then click **Reset** again.
- When Internet Explorer finishes resetting the settings, click **Close** in the **Reset Internet Explorer Settings** dialog box.
- Start Internet Explorer again

If you still have problems connecting your laptop, ISS have Network Connection Clinics in the Old Library Cluster room Monday-Friday 10am-4pm

If you believe there to be a fault with your network point in your room; then go to <http://www.ncl.ac.uk/accommodation/current/repairs/network-testing-booking/> and book a network tester.