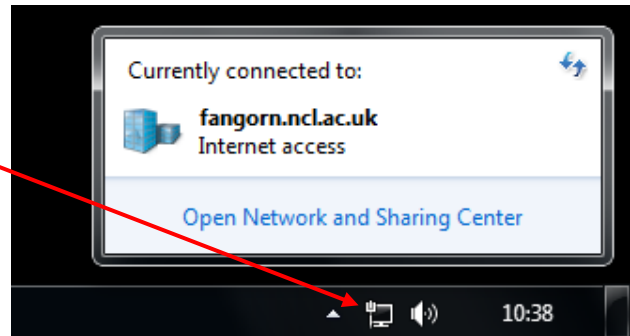


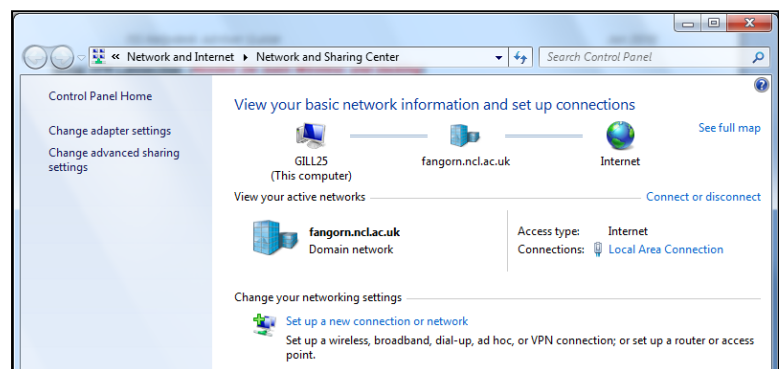
Using your Own Computer to Connect to the University Docking/Wireless ServiceWindows 7 Step by Step InstructionsOn your PC/Laptop

Click on the Network icon on the taskbar

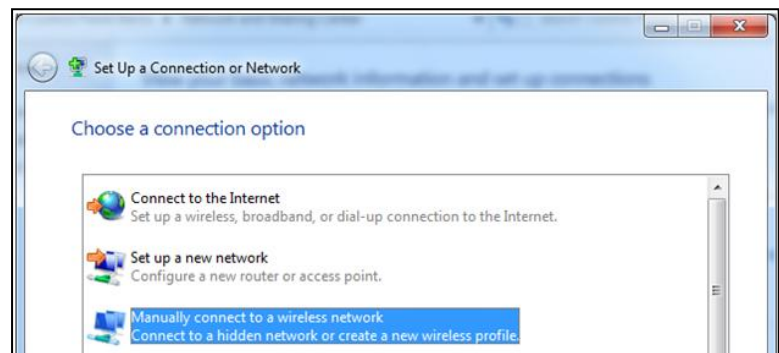
Click Open Network and Sharing Center

Configure your PC/Laptop for Wireless (If you are not using Wireless go to Page 2 - Setup VPN)

In the Network and Sharing center click on "Set up a new connection or network"



Click "Manually connect to a Wireless Network"



Enter the following details:-

Network name: magpie

Security Type:
No authentication (open)

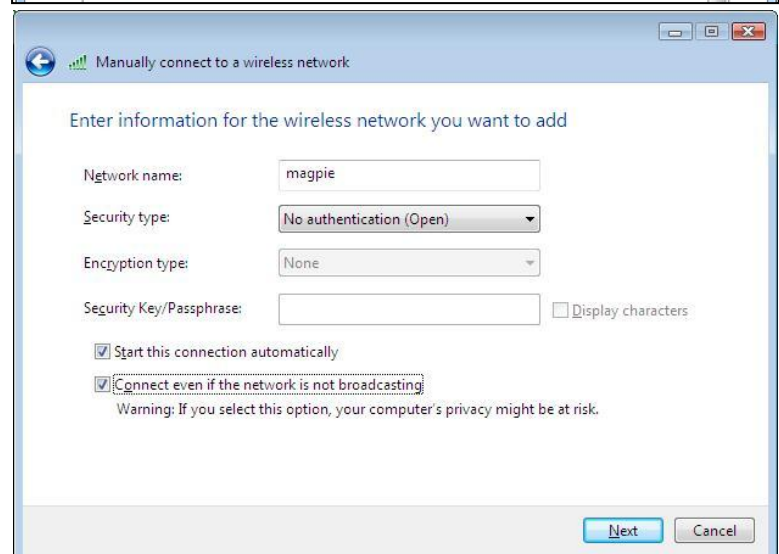
Encryption type: None

Tick the box for :
"Start this connection automatically"

Click Next

Click Close

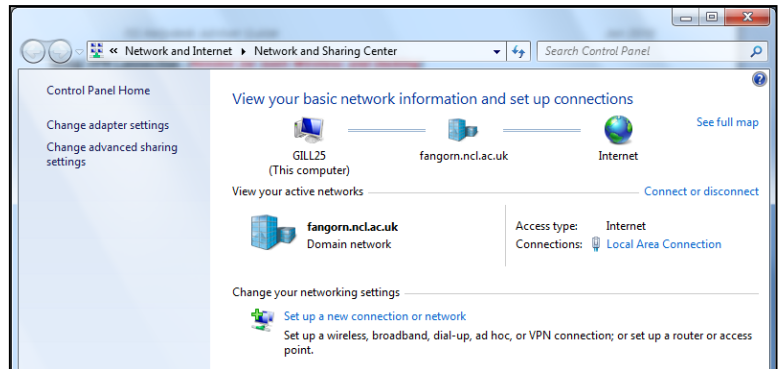
You now need to setup the VPN Connection.



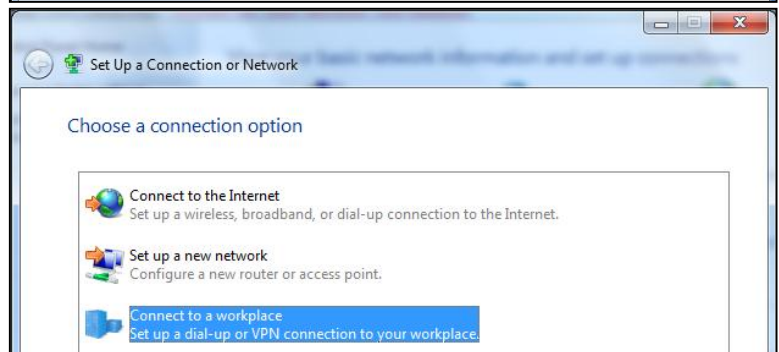
Setup VPN Connection (Needed for both Wireless and Docking)

Download the **VPN Setup Program** from <http://connect.ncl.ac.uk/students/#docking> or follow the instructions to setup the connection manually:-

In the Network and Sharing center click on **“Set up a new connection or network”**



Click on **“Connect to a workplace”**



Click **“Use my Internet connection (VPN)”**



In Internet address put:-

ivpn.ncl.ac.uk

In Destination name put:-

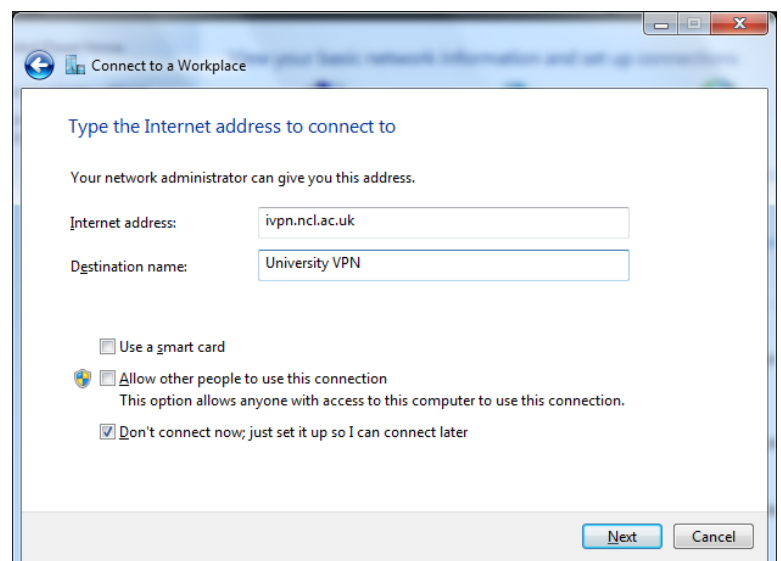
University VPN

Tick the **“Don't connect now just set it up so I can connect later”** button

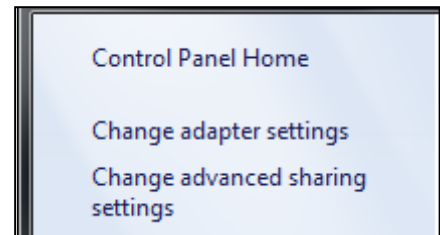
Click **Next**

Click **Create**

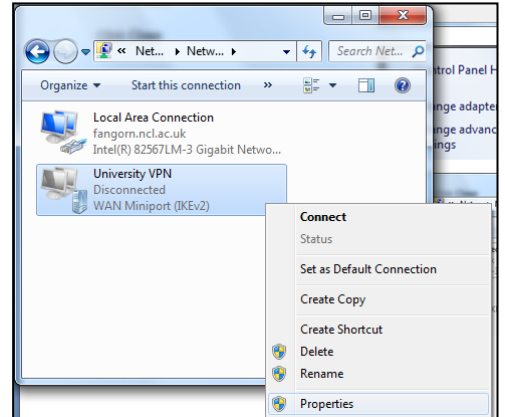
Click **Close**



In the Network and Sharing center click on
“Change adapter settings”

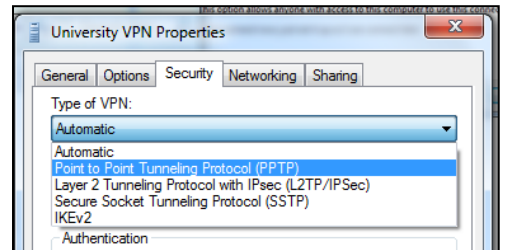


Right-Click on the “University VPN” and
Click on Properties



Click on the “Security” tab

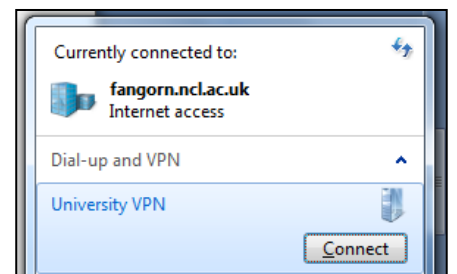
Change “Type of VPN” from Automatic to
Point to Point Tunneling Protocol (PPTP)



Click OK

Connect to VPN (Needed for both Wireless and Docking)

Click on the Network icon in the taskbar



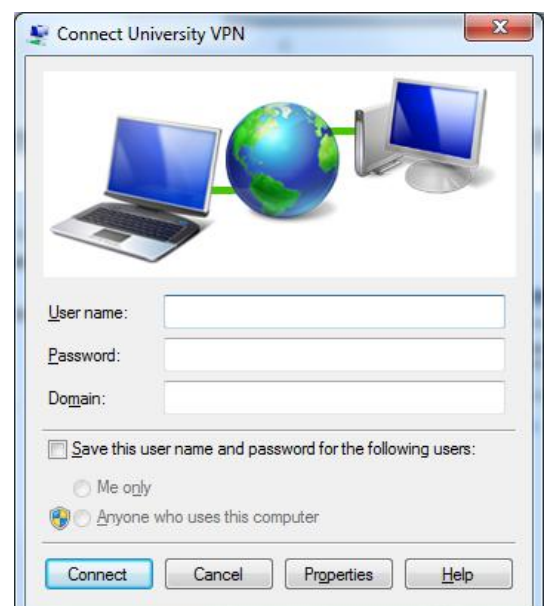
Click “University VPN”

Click “Connect”

Enter *your* University username and password

Domain = “CAMPUS”

Click Connect.



Common Problems

Error 800 :-

DHCP

Click on the **Network icon on the taskbar**

Click **Open Network and Sharing Center**

Click **Change adapter settings**

If you are using Docking (with a network cable) **Right click** on “**Local Area Connection**” and select “**Properties**”

If you are using Wireless; **Right click** on “**Wireless Connection**” and select “**Properties**”

Select **Internet Protocol Version 4 (TCP/IPv4)** then press the **Properties** button

Make sure the Following are selected:

- **Obtain an IP address automatically**
- **Obtain DNS Server address automatically**

Click **OK** then Click **OK** again

Firewalls

Certain Firewall block VPN connection so if you are having problems try temporally turning off the firewall then trying to connect. Windows Firewall does not block VPN connections so you can always leave that one on.

Web Page Problems :-

Internet Explorer Reset

If you can connect but have problems with Internet Explorer crashing or certain pages not opening try Resetting Internet Explorer Settings back to default (Does not delete Favorites) :-

- Close Internet Explorer
- Click **Win7 Start Button**
- Type inetcpl.cpl in the **search box**, and then press **ENTER**:

The **Internet Options** dialog box appears.

- Click the **Advanced** tab.
- Under **Reset Internet Explorer settings**, click **Reset**. Then click **Reset** again.
- When Internet Explorer finishes resetting the settings, click **Close** in the **Reset Internet Explorer Settings** dialog box.
- Start Internet Explorer again

If you still have problems connecting your laptop, ISS have Network Connection Clinics in the Old Library Cluster room Monday-Friday 10am-4pm

If you believe there to be a fault with your network point in your room; then go to <http://www.ncl.ac.uk/accommodation/current/repairs/network-testing-booking/> and book a network tester.