

Windows 2000/XP Step by Step Instructions

Configure your PC/Laptop for Wireless (If you are not using Wireless go to Page 2)

On your PC/Laptop

Click on Start -> Control Panel

Select Network Connections

Click on the **Wireless Connection**



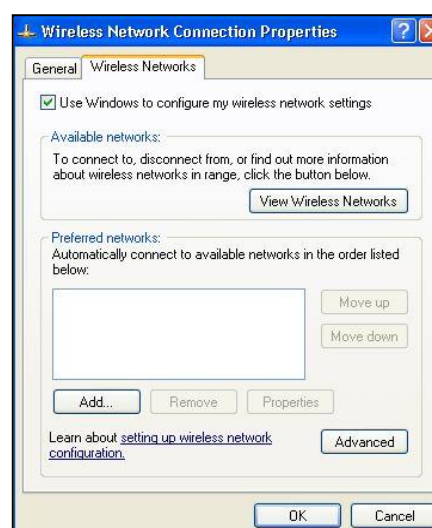
On the left hand menu, select: **Change settings of this connection**



Click the **Wireless Network Tab**

Make sure **Use Windows to configure my wireless network settings** is ticked

Under Preferred Networks click **Add...**



Network name (SSID): Put **magpie**

Network Authentication: Select **Open**

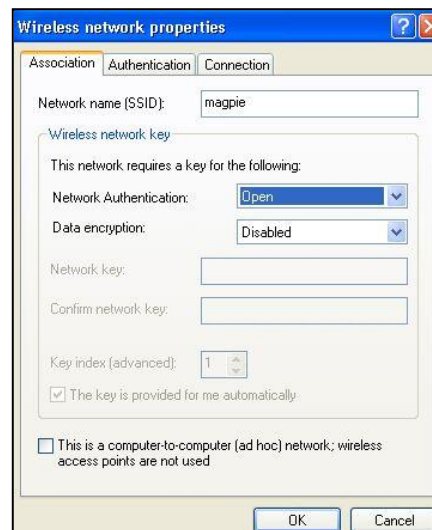
Data encryption: Select **Disabled**

Your settings should now look like this →

Click **OK** then Click **OK** again

Your computer should now connect to the wireless network

You now need to setup the VPN connection.



Connect to the Network via VPN (Needed for both Wireless and Docking)

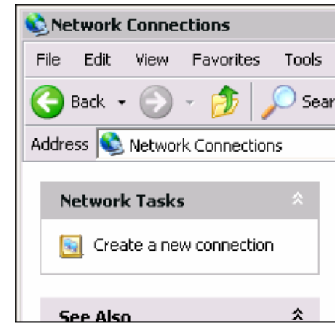
Download the **VPN Setup Program** from <http://connect.ncl.ac.uk/students/#docking> or follow the instructions to setup the connection manually:-

Click on **Start -> Control Panel**

Select **Network Connections**

On the left hand menu, select: **Create a New Connection**

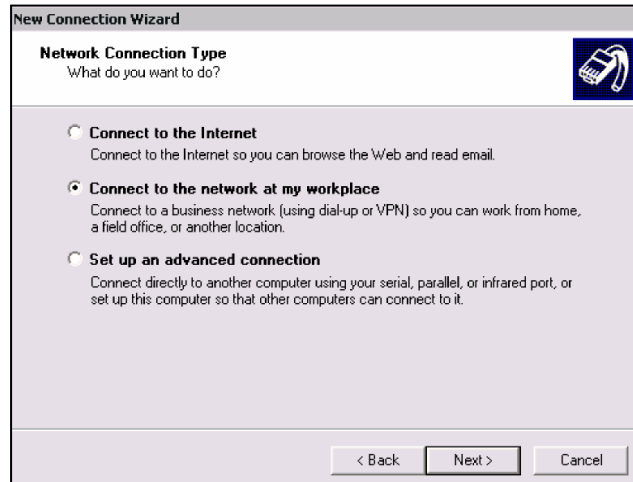
You should see a welcome screen "Welcome to the New Connection Wizard". Click **Next**.



On the network connection type select

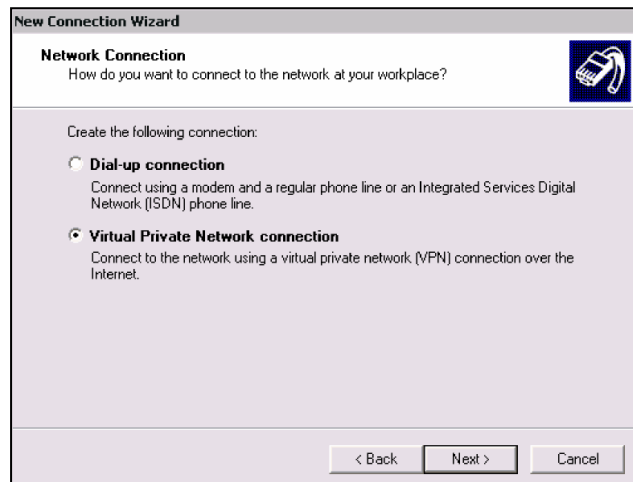
Connect to the Network at my workplace.

Click **Next**.



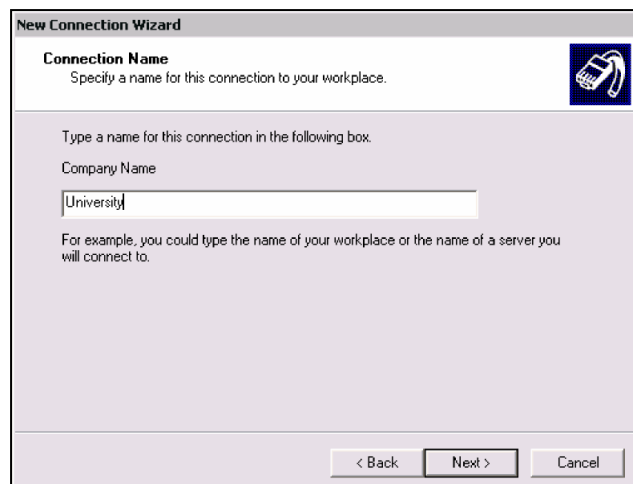
Select **Virtual Private Network Connection**

Click **Next**:



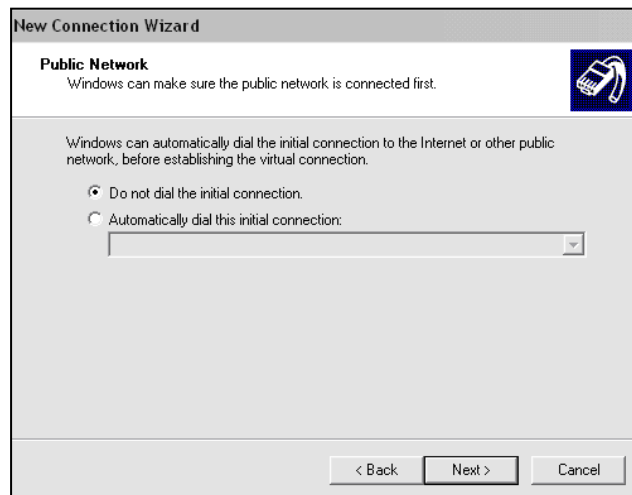
Enter **University** for the company name

Click **Next**:



On machines with an Internet Connection already setup will get the following screen make sure you select **Do not dial the initial connection.**

Click **Next:**



On the “VPN Server Selection Screen” you should enter **ivpn.ncl.ac.uk**

Click **Next.**



On the final screen, Tick the box that says **Add a shortcut to this connection to my desktop.**

Click **Finish.**



An icon will be created on the desktop and a window should pop up (if not just double click on the icon you just created)

Enter your **University Username and Password** (e.g. a1234567)

Click **Connect.**



Common Problems

Error 800 :-

DHCP

Click on **Start** -> **Control Panel**

Select **Network Connections** (it looks different depending on your version of Windows).

If you are using Docking (with a network cable) **Right click** on “**Local Area Connection**” and select “**Properties**”

If you are using Wireless; **Right click** on “**Wireless Connection**” and select “**Properties**”

Select **Internet Protocol (TCP/IP)** then press the **Properties** button

Make sure the Following are selected:

- **Obtain an IP address automatically**
- **Obtain an DNS Server address automatically**

Click **OK** then Click **OK** again

Firewalls

Certain Firewall block VPN connection so if you are having problems try temporally turning off the firewall then trying to connect. Windows Firewall does not block VPN connections so you can always leave that one on.

Web Page Problems :-

Internet Explorer Reset

If you can connect but have problems with Internet Explorer crashing or certain pages not opening try Resetting Internet Explorer Settings back to default (Does not delete Favorites) :-

- Close Internet Explorer
- Click **Start**, and then click **Run**.
- Type inetctl.cpl in the **Open** box, and then press ENTER:

The **Internet Options** dialog box appears.

- Click the **Advanced** tab.
- Under **Reset Internet Explorer settings**, click **Reset**. Then click **Reset** again.
- When Internet Explorer finishes resetting the settings, click **Close** in the **Reset Internet Explorer Settings** dialog box.
- Start Internet Explorer again

If you still have problems connecting your laptop, ISS have Network Connection Clinics in the Old Library Cluster room Monday-Friday 10am-4pm

If you believe there to be a fault with your network point in your room; then go to <http://www.ncl.ac.uk/accommodation/current/repairs/network-testing-booking/> and book a network tester.