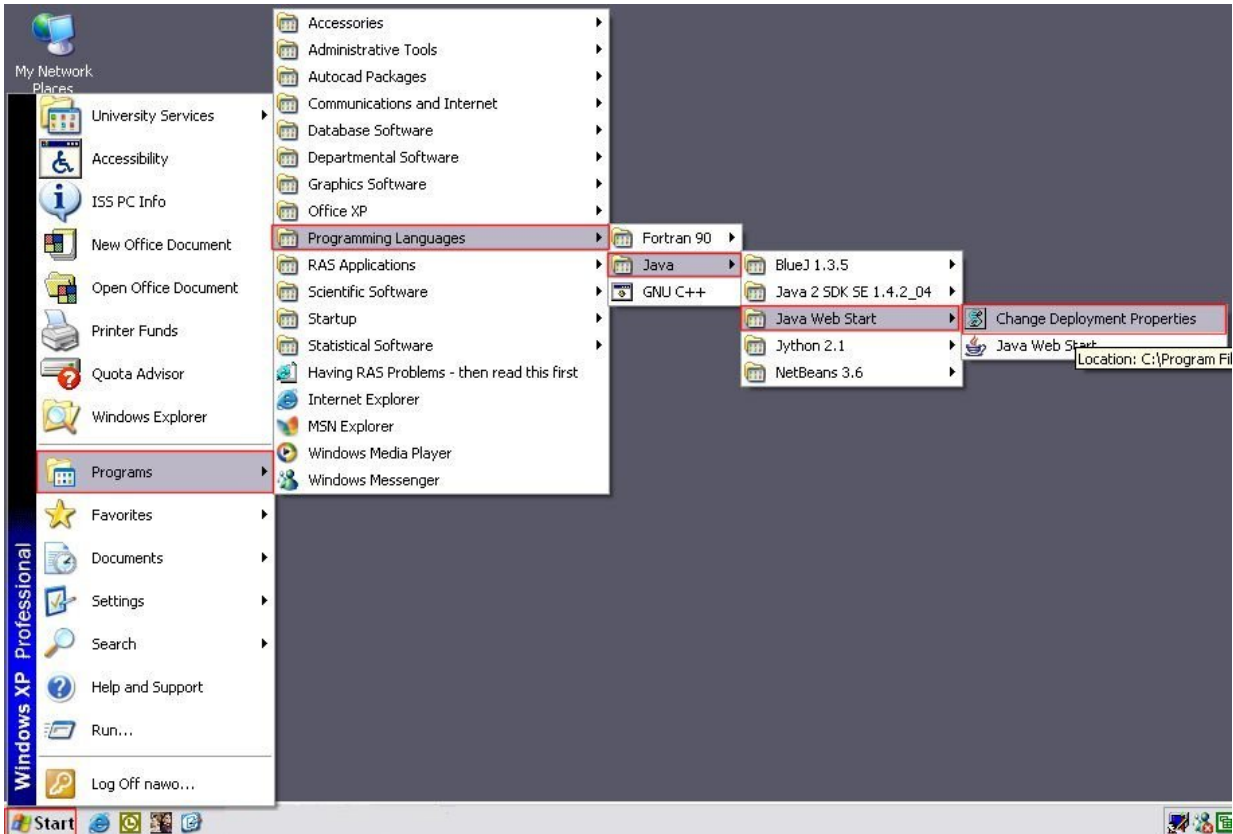


How to remove users Java's Plug-in Cache from Profile Space

Sun's Java Plug-in runs Java applets found in WebPages for example trivial games, as well as more sophisticated web applications. The default location of Sun's Java Plug-in cache and Sun's Java Web Start cache is in a user's profile.

ISS has added a Start menu shortcut primarily so users that exceed their profile quota can easily delete these caches - which COULD be ONE reason for their profile exceeded problems - and redirect them to C:\Temp

Click on "Start", "Programs", "Programming Languages", "Java Web Start" and finally "Change Deployment Properties"



The user will then be asked if they want to reset the caches and delete the existing caches on their profile.

If you click "Yes" then the caches will now be located on C:\Temp and the existing ones will be deleted from the profile.

