

The instructions in this sheet are also on the website below: this sheet is produced only for the extra convenience of new users.

magpie

Magpie is the name of the University's wireless network; it is part of ISS's Docking Service, which is described at <http://docking.ncl.ac.uk>

Everything else that you need to know about using the network is at the Docking website.

Mac and Linux users

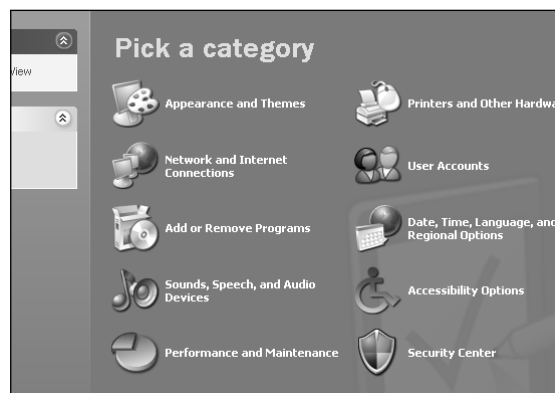
These instructions are for *Windows XP* and *Windows Vista* – the most commonly used operating systems at the University.

- *Apple Macintosh* users: please see the web page <http://www.ncl.ac.uk/iss/mac/wireless.html>
- *Linux* users: please see the web page <http://linux.ncl.ac.uk/wireless/>

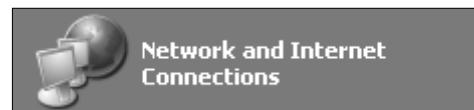
(Use the Web from an ISS PC until your computer is set up.)

Instructions for Windows XP (SP2)

Click **Start**, select **Control Panel** and this window opens:



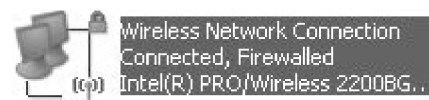
Click the category **Network and Internet Connections**



And then in the new window pick **Network Connections**

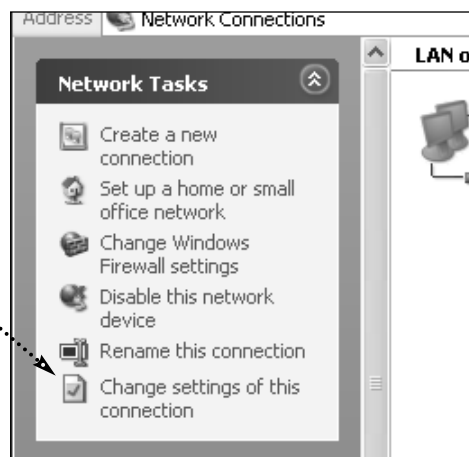


From the **Network Connections Control Panel**, select **Wireless Connection** by clicking it *once* to highlight it:



Having highlighted **Wireless**, in the left hand menu of the Network Connections Control Panel, select

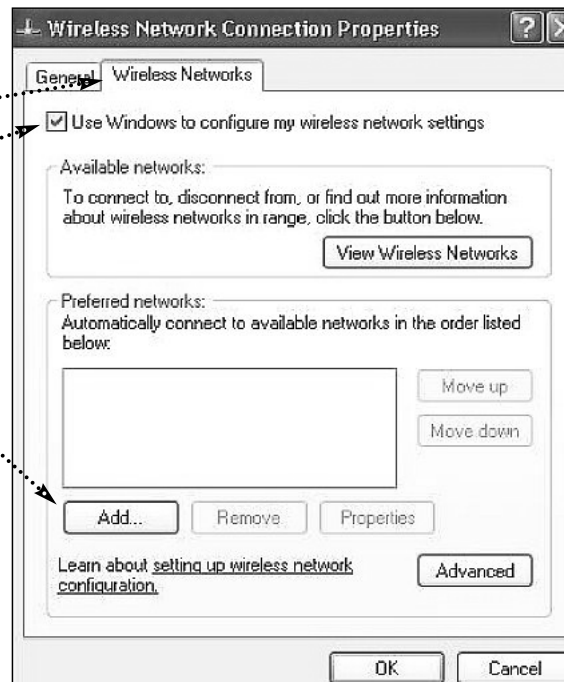
Change settings of this connection



In the new window, click the Wireless Networks tab, then check the box for

Use Windows to configure my wireless network settings ...

and under **Preferred Networks** click **Add...**



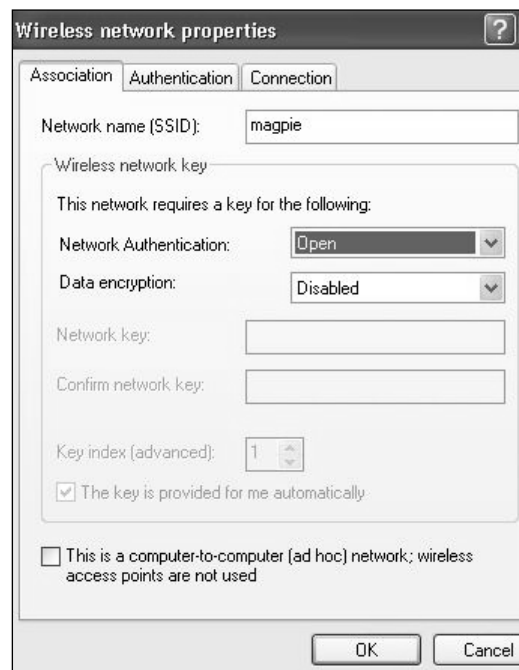
For **Network name (SSID)** type **magpie**

For Network Authentication select **Open**

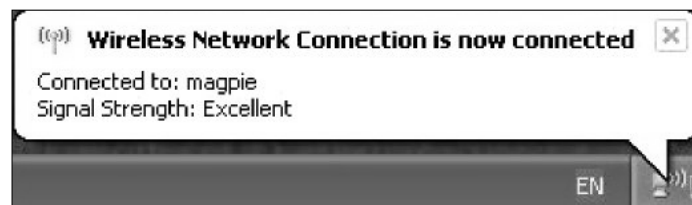
For **Data encryption** select **Disabled**

Click **OK**,

then click **OK** again in the *next* box that you see.



From now on, your computer should detect the University's wireless network (magpie), whenever you enter an access zone :



You've set up magpie

Now you should be OK to connect to the Docking Service via wireless, and take the next two steps — set up a VPN, and set up the proxies.

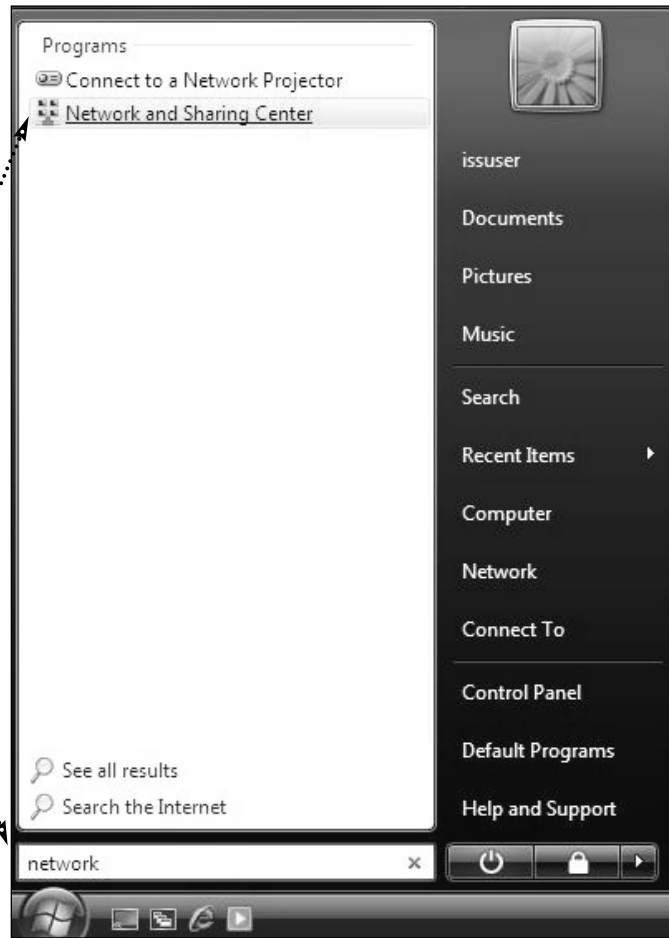
The instructions are at the Docking website, <http://docking.ncl.ac.uk>

Instructions for Windows Vista

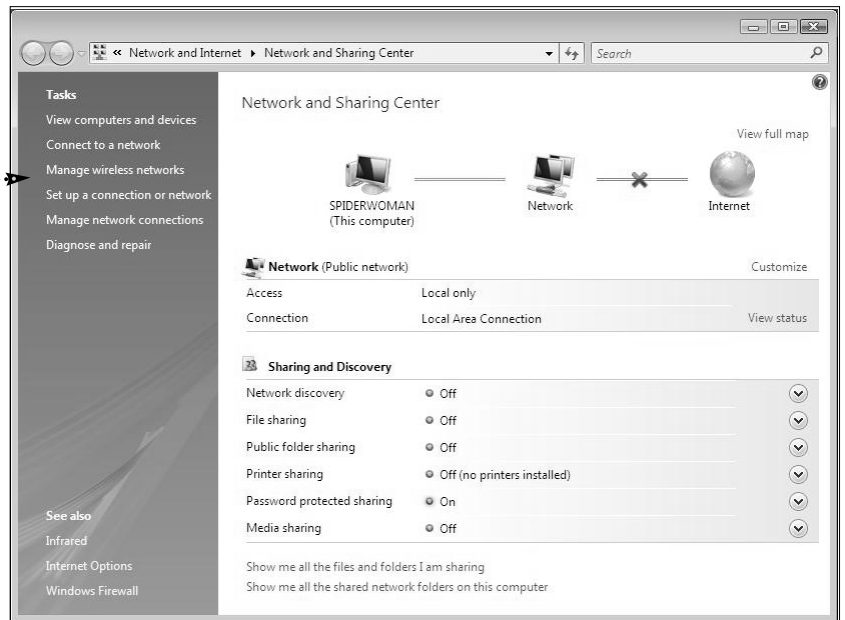
Click **Start**, then type **network** in the search box, but ...

Do NOT press the Return key!

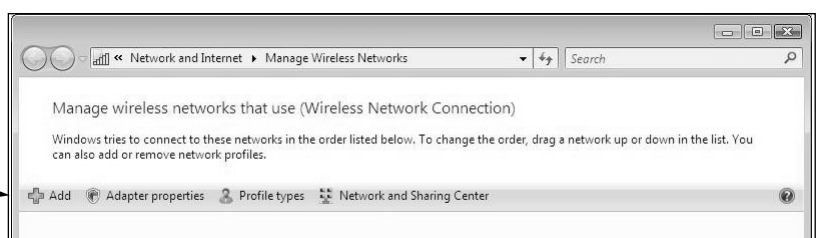
Then click on **Network and Sharing Center**



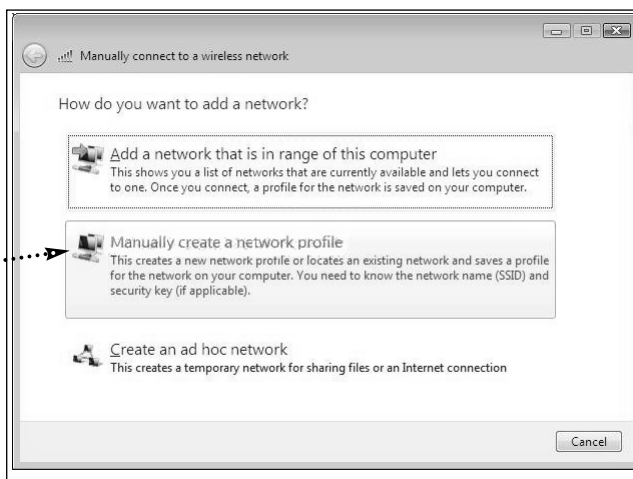
Click on **Manage wireless networks**.



Click the **Add** button



Click **Manually create a network profile**



Enter these details:

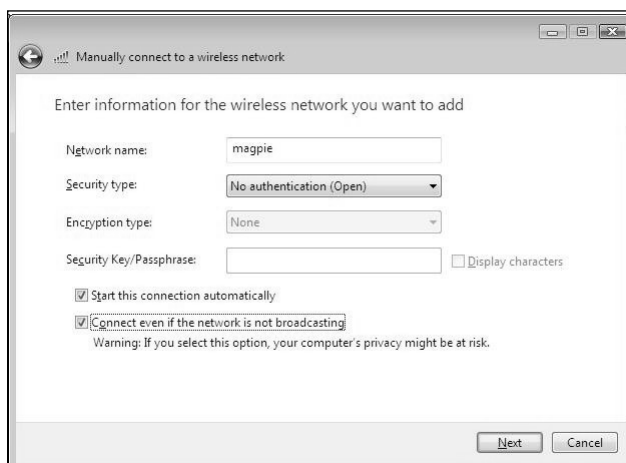
Network name: **magpie**

Security type: **No authentication (open)**

Encryption: **None**

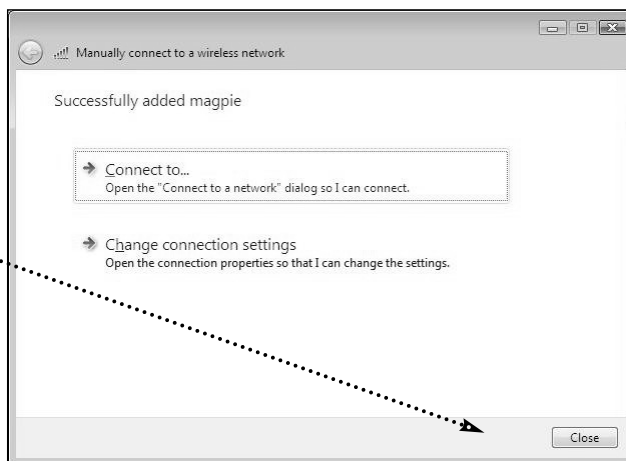
Check the box for **Start this connection automatically**

Click **Next**



You should see this box:

Click **Close**



You've set up magpie

Now you should be OK to connect to the Docking Service via wireless, and take the next two steps — set up a VPN, and set up the proxies.

The instructions are at the Docking website, <http://docking.ncl.ac.uk>