

INTO 

 **Newcastle**
University

University
pathways

for international students

2018
2019



Contents

4	Why Newcastle University?
7	About the University
8	Life on campus
10	Discover Newcastle
12	Home from home
14	Choosing your course
16	International Foundation
26	International Year One
28	International Graduate Diploma
34	Academic English
36	How to apply
37	Application form
39	Scholarships



Excellence with a purpose

Welcome to INTO Newcastle University, your stepping stone to an internationally-recognised degree from Newcastle University. Together we have one aim: to give international students like you the opportunity to study at this university ranked in the top 200 worldwide.

INTO Newcastle University is an excellent choice. You'll study a specialist programme designed exclusively for international students and specifically tailored to the requirements of the University. We'll help you to improve your English language, adjust to life as a student at Newcastle, and excel in the British education system.

Studying at the modern INTO Centre on the University's beautiful city-centre campus, everything you need for successful study is within easy reach. You'll have an amazing experience and will continue to a degree at Newcastle University, where research-informed teaching and industry-relevant degrees prepare you for learning, life and work around the world.

Choosing to study abroad is a big decision. With INTO Newcastle University you can relax knowing that you will have a fantastic experience and prepare to graduate with a qualification that transforms your future.

Choose #INTONewcastle and open up a lifetime of opportunities.

10 YEARS **INTO** NEWCASTLE UNIVERSITY



Why Newcastle University?

Study at a world-class, research-intensive university

RUSSELL GROUP

one of the UK's 24 elite research-intensive universities

★ ★ ★ ★ ★
5 stars

Awarded for research and university facilities
(QS Stars University Ratings 2016)

TEF Gold

for teaching quality
(Teaching Excellence Framework 2017)

Top 200

universities worldwide
(Times Higher Education World University Rankings 2016-2017)

16th in the UK

for research power
(Research Excellence Framework 2014)

Beautiful campus

A museum, art gallery and redbrick buildings on the city-centre campus

Vibrant city

with a big personality, Newcastle is one of the UK's favourite student cities

8th in the UK

for overall student experience
(Times Higher Education Student Experience Survey 2017)

3rd in the UK

for city life
(Whatuni Student Choice Awards 2017)

Employability at Newcastle University

Well-established links with top employers:

Accenture
Coca-Cola
Deloitte
GSK

Microsoft
Proctor & Gamble
PwC
Unilever



Top 20

UK university targeted by the UK's leading employers
(High Fliers Research 2012-2016)



=15th

in the UK for graduate prospects
(The Times and The Sunday Times Good University Guide 2017)

Newcastle University's top-ranked subject areas

UK 1st Communication and Media Studies	6th Architecture	7th Agriculture and Forestry	7th Chemical Engineering
7th Food Science	9th Pharmacology and Pharmacy	Top 10 Biomedical Sciences	Top 10 Geography and Environmental Science
Top 10 Civil Engineering	11th Psychology	=16th Mathematics	=16th Accounting and Finance
	18th Music		Top 20 Law

"I was taught by world-leading experts using materials that were up to date with the latest scientific findings."

Vincent, Indonesia

* The Times and The Sunday Times Good University Guide 2017

Top 1%

of Business Schools worldwide – an elite group of business schools who hold triple accreditation from AACSB, EQUIS and AMBA





Top 200
universities worldwide
for graduate employability
(QS Graduate Employability Rankings 2017)



About the University

As one of the top-ranked universities in the UK, Newcastle has a reputation for academic excellence, world-leading research and graduate employability. Get your career off to the best start by studying here.

Global reputation

Over its 180-year history, Newcastle has established itself as an internationally recognised university with impressive accolades to its name. Not only is it in the top 100 'most international' universities worldwide (Times Higher Education World University Rankings 2016-2017), Newcastle is also recognised for its breadth of degrees, with 14 subjects in the top 20 in the UK (The Times and The Sunday Times Good University Guide 2017).

Choose from over 200 undergraduate and 300 postgraduate and research degrees in a wide variety of subjects. From Accounting, Architecture or Biomedical Sciences to Engineering, Pharmacy or Law, it's easy to find your perfect course.

Research power

As a research-intensive university, it will come as no surprise that Newcastle is rated 16th in the UK for 'research power' (Research Excellence Framework 2014). From pioneering medical and scientific breakthroughs to investigating global issues in health, the environment and society, the University's research helps to transform people's lives around the world.

World-leading experts

Newcastle's teaching is inspired by its internationally excellent research, meaning you'll learn the latest theories and techniques from leading academics. As one of the most research-active universities in the UK, you'll also have plenty of opportunities to carry out your own research with support from experienced researchers.

International outlook

Campuses in Newcastle, London, Singapore and Malaysia, and a community of almost 25,000 students from 135 different countries make Newcastle a global university. When you finish your studies, you'll join an international network of 180,000 graduates in more than 200 countries, so you'll never be far from a fellow Newcastle graduate!

Graduates in demand

With high-quality degrees, a focus on developing employability skills and a strong reputation with employers, Newcastle University will equip you with the skills to become a highly employable graduate. Many of the University's degrees are accredited by, and developed with, professional organisations, preparing you for the world of work and further study.

Prepare for your future

From CV advice and job interview workshops to the opportunity to connect with employers at recruitment fairs, you'll benefit from the University's award-winning careers support. Gain valuable experience and develop skills by taking part in the NCL+ initiative, which includes extracurricular activities and placements.



"We are committed to diversity and are proud of our international outlook, with a student community that includes students from throughout the UK and 135 countries worldwide."

Professor Chris Day, Vice-Chancellor,
Newcastle University



Hear from Shahad about graduating from Newcastle University:
www.myin.to/ShahadGraduation



Take a tour of the campus:
www.intostudy.com/newcastle/university

Life on campus

With traditional buildings and modern architecture, Newcastle's city-centre campus is a beautiful place to study. Add in great social and learning facilities, and you'll find everything you need to have an amazing experience.



200

clubs and societies, from Debating to DJ'ing, and Politics to Surfing



Your Study Centre

The modern INTO Study Centre is close to everything on campus from the library to the Students' Union, so you'll be part of the University from day one. It's been designed with you in mind, and it's where most of your classes during your pathway will take place.

To get you started the Learning Resource Centre has a range of books and study materials. You'll also find plenty of areas to study and socialise throughout the Centre. Want a break between classes? Just head to the INTO Café or one of the other 14 cafés on campus for a coffee or something to eat.

Support every step of the way

From the moment you arrive, our Student Services team will help you settle into life in Newcastle. Whether you're opening a bank account, planning a trip or have an academic question, they're here to help. For students under 18 we offer extra support and there's even a 24-hour telephone helpline if you need to speak to someone during out of office hours.

Find out more about how we support you: www.myin.to/StudentSupportNCL

Investment in great facilities

The University's campus is built around you, and thanks to multimillion-pound investments, is always evolving to give you a great experience.

- Four libraries including the award-winning **Philip Robson Library**, open 24/7, plus specialist law and medical libraries.
- IT facilities to support your studies include over 2,000 computers on campus, support staff and access to **Blackboard**, an online learning resource system.
- Newcastle has an excellent reputation for sport. Enjoy free Silver recreational membership of the **Sports Centre**, with access to all outdoor and indoor facilities excluding the Health and Fitness Suite.
- Access a range of resources in over 50 languages in the award-winning **Language Resource Centre**.

Get involved

There's more to campus life than just studying. You'll take part in an orientation programme in your first week which will give you the chance to meet other students. Parties, day trips and excursions organised by the Student Services team at the Centre will keep you busy the rest of the year.

With its own building in the heart of the campus, the Students' Union is the hub of social life. The Venue is the place to go for club nights and gigs, or there's Luther's, a trendy café bar hosting live music and quiz nights. NUSU Central provides a study space open 24/7, along with 80 computers and a café, EAT@Central.

Top learning facilities

You'll have access to some exceptional facilities in the INTO Study Centre:



Two modern, fully equipped science laboratories



New architecture studio



Two large lecture theatres



Two Learning Resource Centres



Teaching rooms with interactive whiteboards



Social spaces for relaxing and studying



Find out more about the facilities you can access: www.myin.to/StudentFacilitiesNCL

Discover Newcastle

Fun, friendly and affordable, Newcastle has a reputation as one of the UK's favourite student cities. Come and discover the best places to eat, drink and relax!



"Newcastle is a great place to study – you'll feel instantly at home here. I'm having so much fun getting to know the city."

Kezia Charissa, Indonesia

Completed International Foundation and progressed to Combined Honours at Newcastle University



Newcastle's top five

- 1 Vibrant social scene**
Clubs, bars, comedy nights, late night cafés and more to keep you entertained.
- 2 Ideally located**
Great transport connections, including bus, train, plane and ferry, make it easy to explore the UK and further afield.
- 3 Perfect size**
A big city in a small space, you'll never be far from the action.
- 4 Fun and friendly**
Welcoming, student-focused and safe, you'll feel right at home here.
- 5 Multicultural**
Join a community of more than 6,500 international students from over 120 countries.



INTO Centre and Newcastle University

Located in the middle of this compact city, you'll never be far from the action. Shops, restaurants and bars are just moments away from where you'll be studying. Also nearby on campus is the Hatton Gallery and the Great North Museum – why not check out an exhibition between classes.



Shopping

Over 600 shops in the city centre, including the UK's largest city-centre based shopping centre, Eldon Square, just a five-minute walk from the campus. You'll also find independent boutiques in the High Bridge Quarter, and designer names around the Monument.



St James' Park

The home of Premier League football club Newcastle United is not far from the campus. There are also many other places to watch live sport including athletics at Gateshead International Stadium, and rugby team Newcastle Falcons at Kingston Park.



Quayside

Along the banks of the river, this bustling area is packed with cafés, bars, restaurants and a vibrant Sunday market.



Chinatown

Home to many Chinese restaurants and supermarkets, you'll also find lots of international cuisine and fresh food markets in the city.



Sage Gateshead

See everything from classical to indie music by world-renowned artists here. If you enjoy going to gigs, our blog uncovers the five best music venues in Newcastle:

www.myin.to/TopNewcastleMusicVenues



BALTIC

An impressive building showcasing contemporary art. You'll have plenty of other opportunities to soak up world-class culture, with theatres, museums and art galleries across the city and on campus too.



No.1

happiest UK city

(Flash Eurobarometer Survey, The European Commission, February 2016)



Read Natali's story about life in Newcastle:

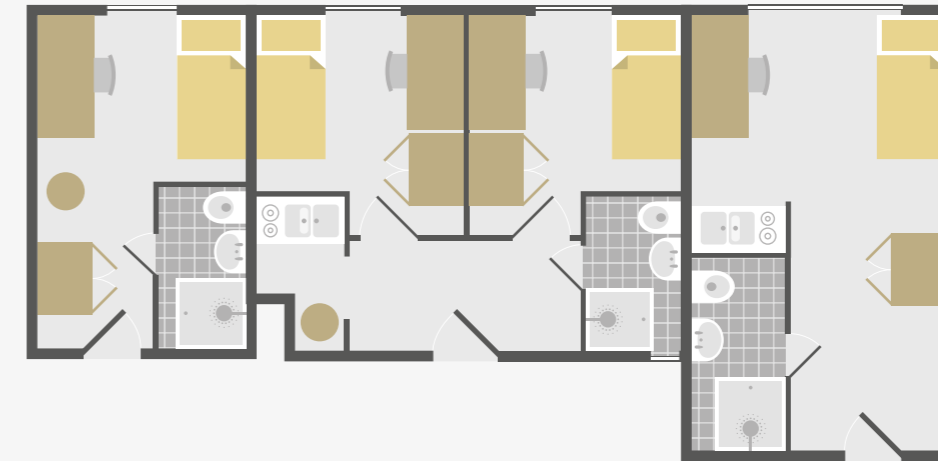
[www.myin.to/
NewcastleForStudents](http://www.myin.to/NewcastleForStudents)

Home from home

With a choice of accommodation options, including student residences on the University campus and homestay accommodation with approved hosts, it's easy for you to find the perfect place to call home.

INTO student residences

These purpose-built, modern residences are on the University's campus, and next to the INTO Centre in the city centre. Living with other INTO Newcastle University international students, there are shared communal areas to help you make friends straight away.



Single Study

En suite bathroom

Shared Studio

Private bathroom

Single Studio

En suite bathroom

All accommodation:

1 MIN
Walk to INTO Centre

Communal areas

Laundry facilities

Wi-Fi

24/7 staff

Social activities

Shared kitchen



Homestay

This is a unique opportunity to experience British life and culture first hand. You will have a private room in a carefully selected host's home, sharing mealtimes and living spaces.

Supporting you

In our residences you'll find staff available 24/7 to offer support, and we'll also provide you with a 24-hour helpline telephone number. If you're under 18, we offer extra support from on-site accommodation support staff or homestay hosts.



"I live in INTO residences on campus, and cook for my friends in our shared kitchen. It's a good opportunity to learn about people's backgrounds and cultures."

Majd, Lebanon
Completed International Foundation and progressed to Biomedical Science at Newcastle University



Take a look around our accommodation:

www.myin.to/Newcastle/Accommodation

Choosing your course

Get university ready with our tailored, academic pathway programmes. You'll benefit from university-style teaching and the highest academic standards by choosing one of our programmes designed in partnership with Newcastle University. And when it comes to progressing to your chosen degree, we'll support you with your university application.

"We provide a welcoming, safe and supportive environment with an innovative approach to learning and teaching. This will help you thrive and ease your transition to your degree."

Stephen Grinsell
Director of Studies and Student Experience



ENTRY
▼

INTO NEWCASTLE UNIVERSITY

FIND YOUR LEVEL

BEGIN YOUR CAREER



Watch our video about International Foundation
www.myin.to/InternationalFoundation



Watch our video about International Year One
www.myin.to/InternationalYearOne



Watch our video about International Graduate Diploma
www.myin.to/Mastersdegree

Want to improve your English?

If English is not your first language, you may be worried about studying in a different language. Our **Academic English** course provides intensive preparation to help you succeed in your academic studies. We'll provide extra support in developing your English language fluency and study skills, helping you to confidently progress to your academic programme.

For more information, see pages 34-35.

If you hold an offer to start a degree at Newcastle University in September 2018, our **Pre-sessional English** course will provide you with intensive preparation in academic English. You'll focus on content-specific grammar, style and structure, and have the opportunity to practise speaking English on topics related to your degree programme.

For more information, visit www.intostudy.com/newcastle/courses

Get Ready for English online course

You can also enrol on our online English course, helping you to practise and improve your English before you arrive in the UK.

To find out more, visit: www.intostudy.com/get-ready-for-english

Placement options

Completing a work placement as part of your degree will provide you with many advantages and help to enhance your employability.

- Develop real-world, practical experience in the industry you wish to work in.
- Gain a better understanding of your future career direction.
- Develop a network of industry contacts.
- Gain workplace interpersonal skills.
- Enhance your CV.

See the progression table for the programme you wish to study to check if this is an option for your chosen degree. To find out more about integrating a placement into your degree at Newcastle University visit: www.ncl.ac.uk/careers/workexperience/placement



For more information:
www.intostudy.com/newcastle/courses

Architecture

Start dates

June, September and January

Programme length

3 terms or approximately 9 months
4 terms or approximately 12 months

Class hours

21 hours per week minimum

Class size

Maximum of 16 students per class
for English language teaching

Age requirement

17 years and above*

Academic entry requirements

Completion of 12 years of schooling (or the local equivalent to meet the same standard) with good grades.

Portfolio guidelines:

You will be expected to provide a portfolio as part of the application. Your portfolio should demonstrate core skills and illustrate your genuine interest in architecture. The portfolio will be carefully assessed according to outlined criteria. Portfolios that do not comply with these guidelines will not be considered suitable for entry and applicants will be required to resubmit. Portfolios will be assessed at key times throughout the academic year.

For full details of portfolio guidelines and assessment dates visit:

www.intostudy.com/ncl/architecture-portfolio-fdn

English language entry requirements

3 term: IELTS 5.5 (with a minimum of 4.5 in all subskills) or equivalent

4 term: IELTS 5.0 (with a minimum of 4.5 in all subskills) or equivalent

If you do not meet the minimum English language requirements you should apply for our Academic English course. See pages 34-35 for more information.

Award and validating body

Successful completion of the International Foundation programme leads to the award of International Foundation Certificate (RQF Level 3) from Newcastle University.

Tuition fees

See page 36 for course dates and prices.

For full course information visit:

www.intostudy.com/newcastle/courses

* All students commencing courses on a published September start date must be 17 years old by 31 December of that calendar year. For all other start dates, students must be 17 years old on the published start date of the programme.

- › Progress to Year 1 of a professionally accredited undergraduate degree
- › Gain hands-on experience through practical-based learning in the INTO Centre Architecture Studio

What will I study?

Architectural Communication (20 credits)
Architecture, Culture and History (20 credits)
English for Academic Purposes (40 credits)
Introduction to Architecture 1 (20 credits)
Introduction to Architecture 2 (20 credits)

You will need to earn 120 credits to successfully complete your pathway programme.

For detailed module descriptions, please visit: www.intostudy.com/newcastle/courses

Special features

- › Learn from a team of experienced architects with expertise in both practice and research.
- › Develop your sketching and drawing skills in a creative and stimulating way by exploring the natural and built environment.
- › Take inspiration from field trips, and study famous buildings in their context. Regular destinations include Edinburgh, Manchester and Glasgow.
- › Develop your creative skills through a range of exciting projects, from drawing to the physical scaled model.
- › Learn in the stimulating environment of the spacious Architecture Studio which is in a historic building.
- › Create a design portfolio showcasing your skills, personality and creativity as an architecture student.

Prepare to progress to a degree at Newcastle University:



6th

in the UK for Architecture

(The Times and The Sunday Times
Good University Guide 2017)



7th

in the UK for Town and Country
Planning and Landscape

(The Times and The Sunday Times Good University Guide 2017)

Progression options

You can progress to two degrees at Newcastle University from this pathway. The following table provides information about which modules you need to study and what grades you need to achieve to be guaranteed a place at Newcastle University in September 2019.

Degree subject	Specific requirements	English level	Final academic grade %
Architecture BA (Hons)	Introduction to Architecture 1 and 2 (60%)	65	60
Architecture and Urban Planning BA (Hons)	None	65	60

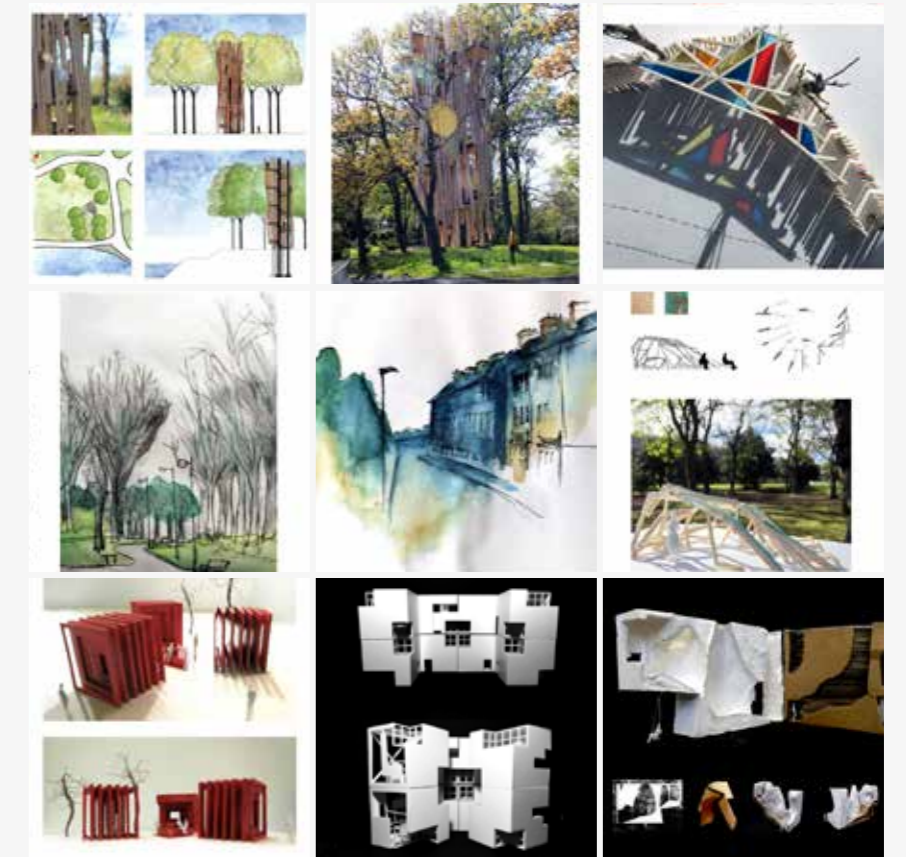


"I entered first year equipped with proper research skills and a better understanding of architecture, allowing me to be a step ahead of students who came in through other pathways."

Emily, Malaysia
Completed International Foundation and progressed to Architecture at Newcastle University

My portfolio

"I personally found the INTO Architecture Foundation programme very helpful in preparing me for the transition from high school to university. Take a look at some of my work."



"There is an open and supportive studio culture. The tutors were really caring. They shared a lot of time and effort with us. Now, I'm studying successfully in the second year, and I've realised I gained a really solid foundation through the INTO programme."

Anna, Russia
Completed International Foundation and progressed to Architecture at Newcastle University



Want to find out more?

Visit our website or for help with your application, contact our Admissions team or your education counsellor.

Find the most up-to-date information here:
www.intostudy.com/newcastle/courses

Biological and Biomedical Sciences

Start dates

June, September and January

Programme length

3 terms or approximately 9 months
4 terms or approximately 12 months

Class hours

26 hours per week minimum

Class size

Maximum of 16 students per class
for English language teaching

Age requirement

17 years and above*

Academic entry requirements

Completion of 12 years of schooling (or the local equivalent to meet the same standard) with good grades.

English language entry requirements

3 term: IELTS 5.5 (with a minimum of 4.5 in all subskills) or equivalent

4 term: IELTS 5.0 (with a minimum of 4.5 in all subskills) or equivalent

Students intending to progress to a degree marked ** in the table opposite must meet the following requirements:

3 term: IELTS 5.5 (with a minimum of 5.0 in all subskills) or equivalent

4 term: IELTS 5.0 (with a minimum of 4.5 in all subskills) or equivalent

If you do not meet the minimum English language requirements you should apply for our Academic English course. See pages 34-35 for more information.

Award and validating body

Successful completion of the International Foundation programme leads to the award of International Foundation Certificate (RQF Level 3) from Newcastle University.

Tuition fees

See page 36 for course dates and prices.

For full course information visit:

www.intostudy.com/newcastle/courses

* All students commencing courses on a published September start date must be 17 years old by 31 December of that calendar year. For all other start dates, students must be 17 years old on the published start date of the programme.

- Progress to Year 1 of a wide range of undergraduate degrees
- Degrees in the School of Biomedical Sciences share a common first year, providing flexibility and the option of changing from one degree to another

What will I study?

Biology (20 or 40 credits)

Chemistry (20 credits)

English for Academic Purposes (20 or 40 credits)

Mathematics and Statistics (20 credits)

Physics (20 credits)

Study Skills and ICT (20 credits)

You will need to earn 120 credits to successfully complete your pathway programme.

For detailed module descriptions, please visit: www.intostudy.com/newcastle/courses

Special features

- Support your theoretical studies in Chemistry and Biology with opportunities for hands-on, practical learning in the dedicated science laboratories equipped with modern analytical equipment.
- Learn from a highly qualified team of teachers, most of whom hold PhDs, postgraduate qualifications and teaching qualifications.
- Attend weekly classes delivered by University lecturers.
- Receive a 10" Samsung Galaxy tablet – that's yours to keep – with access to digital textbooks and interactive activities.

Prepare to progress to a degree at Newcastle University:



7th

in the UK for Food Science

(The Times and The Sunday Times Good University Guide 2017)



Top 10

in the UK for Biomedical Sciences

(The Times and The Sunday Times Good University Guide 2017)

"I was taught by world-leading experts using materials that were up-to-date with the latest scientific findings. I loved working with prestigious research groups during the holiday."

Vincent, Indonesia

Graduated with BSc (Hons) Biomedical Genetics from Newcastle University and now studying PhD Cardiovascular Tissue Engineering at Imperial College London



Want to find out more?

Visit our website or for help with your application, contact our Admissions team or your education counsellor.

Progression options

You can progress to more than 35 degrees at Newcastle University from this pathway.

The following table provides information about which modules you need to study and the grades you need to achieve to be guaranteed a place at Newcastle University in September 2019.

We've only included the details for some of the most popular degrees our students have progressed to.

Degree subject	Specific requirements	English level	Final academic grade %
Agriculture with Agronomy BSc (Hons)	Mathematics and Statistics (50%); Chemistry (50%); Biology 2 (55%)	65	65
Agriculture with Animal Production Science BSc (Hons)	Mathematics and Statistics (50%); Chemistry (50%); Biology 2 (55%)	65	65
Agriculture with Farm Business Management BSc (Hons)	Mathematics and Statistics (50%); Chemistry (50%); Biology 2 (55%)	65	65
Animal Science BSc (Hons)	Mathematics and Statistics (50%); Chemistry (50%); Biology 1 (60%); Biology 2 (60%)	65	65
Applied Plant Science BSc (Hons) ^P	Mathematics and Statistics (50%); Chemistry (50%); Biology 2 (55%)	65	65
Biochemistry** BSc (Hons)*	Mathematics and Statistics (55%); Chemistry (55%); Biology 1 (70%); Biology 2 (70%)	65 with 65 in all subskills	65
Biology (Cellular and Molecular Biology) BSc (Hons) ^P	Mathematics and Statistics (55%); Chemistry (55%); Biology 1 (70%); Biology 2 (70%)	65	65
Biology (Ecology and Conservation) BSc (Hons)	Mathematics and Statistics (55%); Chemistry (55%); Biology 1 (70%); Biology 2 (70%)	65	65
Biology BSc (Hons)	Mathematics and Statistics (55%); Chemistry (55%); Biology 1 (70%); Biology 2 (70%)	65	65
Biomedical Genetics** BSc (Hons)*	Mathematics and Statistics (55%); Chemistry (55%); Biology 1 (70%); Biology 2 (70%)	65 with 65 in all subskills	65
Biomedical Sciences** BSc (Hons)*	Mathematics and Statistics (55%); Chemistry (55%); Biology 1 (70%); Biology 2 (70%)	65 with 65 in all subskills	65
Chemistry with Medicinal Chemistry BSc (Hons)* ^P	Mathematics and Statistics (60%); Chemistry (60%)	65	55
Chemistry BSc (Hons)* ^P	Mathematics and Statistics (60%); Chemistry (60%)	65	55
Environmental Science BSc (Hons) ^P	Mathematics and Statistics (55%)	65	65
Food and Human Nutrition BSc (Hons) ^P	Mathematics and Statistics (55%); Chemistry (60%); Biology 1 (65%); Biology 2 (65%)	65	65
Food Business Management and Marketing BSc (Hons) ^P	Mathematics and Statistics (50%); Chemistry (50%); Biology 2 (55%)	65	65
Marine Biology and Oceanography BSc (Hons)	Mathematics and Statistics (55%); Chemistry (55%); Biology 1 (60%); Biology 2 (60%)	65	60
Marine Biology BSc (Hons)	Mathematics and Statistics (55%); Chemistry (55%); Biology 1 (60%); Biology 2 (60%)	65	60
Marine Zoology BSc (Hons)	Mathematics and Statistics (55%); Chemistry (55%); Biology 1 (60%); Biology 2 (60%)	65	60
Medical Science (Deferred choice)** BSc (Hons)	Mathematics and Statistics (55%); Chemistry (55%); Biology 1 (70%); Biology 2 (70%)	65 with 65 in all subskills	65
Nutrition with Food Marketing BSc (Hons) ^P	Mathematics and Statistics (55%); Chemistry (60%); Biology 1 (65%); Biology 2 (65%)	65	65
Pharmacology** BSc (Hons)	Mathematics and Statistics (55%); Chemistry (55%); Biology 1 (70%); Biology 2 (70%)	65 with 65 in all subskills	65
Pharmacy** MPharm (Hons)	Mathematics and Statistics (55%); Chemistry (55%); Biology 1 (70%); Biology 2 (70%)	65 with 65 in all subskills	65
Physiological Sciences** BSc (Hons)	Mathematics and Statistics (55%); Chemistry (55%); Biology 1 (70%); Biology 2 (70%)	65 with 65 in all subskills	65
Psychology and Biology** BSc (Hons)	Mathematics and Statistics (60%); Two other different science subjects (60%)	65 with 65 in all subskills	55
Psychology and Nutrition BSc (Hons) ^P	Mathematics and Statistics (60%); Chemistry (60%); Biology 1 (65%); Biology 2 (65%)	65	65
Psychology and Sport and Exercise Science** BSc (Hons) ^P	Mathematics and Statistics (60%); Two other different science subjects (60%)	65 with 65 in all subskills	60
Psychology** BSc (Hons)	Mathematics and Statistics (60%); Chemistry (55%); Biology 1 (70%)	65 with 65 in all subskills	65
Sport and Exercise Science** BSc (Hons)	Mathematics and Statistics (55%); Chemistry (55%); Biology 1 (70%); Biology 2 (70%)	65 with 65 in all subskills	65
Zoology BSc (Hons)	Mathematics and Statistics (55%); Chemistry (55%); Biology 1 (70%); Biology 2 (70%)	65	65

^P Placement year option available.

* Also available as an integrated Master's with the same requirements.

** Students intending to progress to these degrees must meet the higher English language entry requirements for the 3 term programme as shown on page 18.

Can't see the degree you want to study?
www.intostudy.com/newcastle/courses

Business and Management

Start dates

June, September and January

Programme length

3 terms or approximately 9 months
4 terms or approximately 12 months

Class hours

21 hours per week minimum

Class size

Maximum of 16 students per class
for English language teaching

Age requirement

17 years and above*

Academic entry requirements

Completion of 12 years of schooling (or the local equivalent to meet the same standard) with good grades.

English language entry requirements

3 term: IELTS 5.5 (with a minimum of 4.5 in all subskills) or equivalent

4 term: IELTS 5.0 (with a minimum of 4.5 in all subskills) or equivalent

For students intending to progress to Newcastle Law School:

3 term: IELTS 6.0 (with a minimum of 5.5 in all subskills) or equivalent

4 term: IELTS 5.5 (with a minimum of 5.0 in all subskills) or equivalent

If you do not meet the minimum English language requirements you should apply for our Academic English course. See pages 34-35 for more information.

Award and validating body

Successful completion of the International Foundation programme leads to the award of International Foundation Certificate (RQF Level 3) from Newcastle University.

Tuition fees

See page 36 for course dates and prices.

For full course information visit:

www.intostudy.com/newcastle/courses

* All students commencing courses on a published September start date must be 17 years old by 31 December of that calendar year. For all other start dates, students must be 17 years old on the published start date of the programme.

› Progress to Year 1 of an undergraduate degree at triple-accredited Newcastle University Business School

› BA (Hons) Accounting and Finance provides exemptions to various ACCA exams

What will I study?

English for Academic Purposes (40 credits)

Introduction to Accounting (10 credits)

Introduction to Business (20 credits)

Mathematics for Business (20 credits)

Study Skills and Projects (30 credits)

You will need to earn 120 credits to successfully complete your pathway programme.

For detailed module descriptions, please visit: www.intostudy.com/newcastle/courses

Special features

- › Benefit from high contact hours during your first semester, before progressing to more independent study in preparation for your degree programme.
- › Learn from prestigious motivational speakers who deliver interactive lectures in their field of specialism. Topics have included fair trade, social marketing, business plans, and performance management and motivation.
- › Benefit from presentations from Newcastle University lecturers on topics such as double-entry book-keeping and cost accounting.
- › Learn how accounting works within a real business context through practical group work.
- › Benefit from practical learning, including using case studies from the Financial Times 100 series.

Prepare to progress to a degree at Newcastle University:



6th

in the UK for Marketing

(The Complete University Guide 2018)



Top 15

in the UK for Accounting and Finance

(The Complete University Guide 2018)

Progression options

You can progress to more than 10 degrees at Newcastle University from this pathway.

The following table provides information about which modules you need to study and what grades you need to achieve to be guaranteed a place at Newcastle University in September 2019.

Degree subject	Specific requirements	English level	Final academic grade %
Accounting and Finance BA (Hons)	Mathematics for Business (65%)	65	70
Agri-Business Management BSc (Hons)	Mathematics for Business (50%)	65	65
Business Management BA (Hons)	Mathematics for Business (60%)	65	65
Economics BSc (Hons)	Mathematics for Business (65%)	65	70
Economics and Business Management BA (Hons)	Mathematics for Business (65%)	65	70
Economics and Finance BSc (Hons)	Mathematics for Business (65%)	65	70
Law LLB (Hons)	None	70	65
Law (European Legal Studies) LLB (Hons)	None	70	65
Law (International Legal Studies) LLB (Hons)	None	70	65
Marketing BSc (Hons)	Mathematics for Business (60%)	65	65
Marketing and Management BSc (Hons)	Mathematics for Business (60%)	65	65
Politics and Economics BA (Hons)	Mathematics for Business (65%)	65	60

Placement year option available.

Want to find out more?

Visit our website or for help with your application, contact our Admissions team or your education counsellor.

"INTO offered a great transition from high school to university and the UK system, with a lot of support from teachers and an exciting social programme."

Bukhosi, Zimbabwe

Completed International Foundation and progressed to Economics and Business Management at Newcastle University



Find the most up-to-date information here:
www.intostudy.com/newcastle/courses

Humanities and Social Sciences

Start dates

June, September and January

Programme length

3 terms or approximately 9 months
4 terms or approximately 12 months

Class hours

21 hours per week minimum

Class size

Maximum of 16 students per class
for English language teaching

Age requirement

17 years and above*

Academic entry requirements

Completion of 12 years of schooling (or the local equivalent to meet the same standard) with good grades.

English language entry requirements

3 term: IELTS 5.5 (with a minimum of 4.5 in all subskills) or equivalent

4 term: IELTS 5.0 (with a minimum of 4.5 in all subskills) or equivalent

For students intending to progress to Newcastle Law School:

3 term: IELTS 6.0 (with a minimum of 5.5 in all subskills) or equivalent

4 term: IELTS 5.5 (with a minimum of 5.0 in all subskills) or equivalent

If you do not meet the minimum English language requirements you should apply for our Academic English course. See pages 34-35 for more information.

Award and validating body

Successful completion of the International Foundation programme leads to the award of International Foundation Certificate (RQF Level 3) from Newcastle University.

Tuition fees

See page 36 for course dates and prices.

For full course information visit:

www.intostudy.com/newcastle/courses

* All students commencing courses on a published September start date must be 17 years old by 31 December of that calendar year. For all other start dates, students must be 17 years old on the published start date of the programme.

- › Progress to Year 1 of a wide range of undergraduate degrees
- › Benefit from events and field trips that bring classroom learning to life

What will I study?

English for Academic Purposes (40 credits)

Introduction to British Institutions and Culture (10 credits)

Introduction to Sociology (20 credits)

Introduction to the Study of Humanities and Social Sciences (20 credits)

Study Skills and Projects (30 credits)

You will need to earn 120 credits to successfully complete your pathway programme.

For detailed module descriptions, please visit: www.intostudy.com/newcastle/courses

Special features

- › Benefit from high contact hours during your first semester, before progressing to more independent study in preparation for your degree programme.
- › Develop your teamwork and communication skills by taking part in co-curricular activities such as poetry in 'Dead Poet's Society' or singing and dancing in 'Show Tunes'.
- › Have the chance to study one of Shakespeare's great plays and go on a trip to a theatre to see it performed live.
- › Enjoy lessons in Newcastle University archives where you will investigate letters from World War 1.
- › Investigate contemporary social issues in relation to sociological theory.

Prepare to progress to a degree at Newcastle University:



1st

in the UK for Communication and Media Studies

(The Times and The Sunday Times Good University Guide 2017)



Top 20

in the UK for Law

(The Times and The Sunday Times Good University Guide 2017)

Progression options

You can progress to 20 degrees at Newcastle University from this pathway.

The following table provides information about the grades you need to achieve to be guaranteed a place at Newcastle University in September 2019.

Degree subject	Specific requirements	English level	Final academic grade %
Ancient History and Archaeology BA (Hons)	None	65	60
Archaeology BA (Hons)	None	65	60
Architecture and Urban Planning BA (Hons)	None	65	60
Combined Honours* BA (Hons)	None	65	60
Education BA (Hons)	None	65 with 60 in writing	60
Film and Media BA (Hons)	None	65	60
Film Practices BA (Hons)	None	65	60
Geography BA (Hons)	None	65	60
Geography and Planning BA (Hons)	None	65	60
Journalism, Media and Culture BA (Hons)	None	65	60
Law LLB (Hons)	None	70	65
Law (European Legal Studies) LLB (Hons)	None	70	65
Law (International Legal Studies) LLB (Hons)	None	70	65
Master of Planning MPlan (Hons)	None	65	60
Media, Communication and Cultural Studies BA (Hons)	None	65	60
Philosophy BA (Hons)	None	65	60
Politics BA (Hons)	None	65	60
Politics and Sociology BA (Hons)	None	65	60
Sociology BA (Hons)	None	65	60
Urban Planning BA (Hons)	None	65	60

* The Combined Honours degree offers a diverse range of subjects including: Archaeology; Business; Classics; Education; English Linguistic Studies; Film Studies/Film Practice; Geography; German; History of Art; Japanese; Music; Philosophy; Portuguese; Psychology; Spanish and Latin American Studies.

Want to find out more?

Visit our website or for help with your application, contact our Admissions team or your education counsellor.

"INTO helped me in bridging my transition from high school to university life, and assisted me in improving both my academic and conversational English."

Jesslyn, Indonesia

Completed International Foundation and progressed to Media and Business (Combined Honours) at Newcastle University



Physical Sciences and Engineering

Start dates

June, September and January

Programme length

3 terms or approximately 9 months
4 terms or approximately 12 months

Class hours

26 hours per week minimum

Class size

Maximum of 16 students per class
for English language teaching

Age requirement

17 years and above*

Academic entry requirements

Completion of 12 years of schooling (or the local equivalent to meet the same standard) with good grades.

English language entry requirements

3 term: IELTS 5.5 (with a minimum of 4.5 in all subskills) or equivalent

4 term: IELTS 5.0 (with a minimum of 4.5 in all subskills) or equivalent

If you do not meet the minimum English language requirements you should apply for our Academic English course. See pages 34-35 for more information.

Award and validating body

Successful completion of the International Foundation programme leads to the award of International Foundation Certificate (RQF Level 3) from Newcastle University.

Tuition fees

See page 36 for course dates and prices.

For full course information visit:

www.intostudy.com/newcastle/courses

* All students commencing courses on a published September start date must be 17 years old by 31 December of that calendar year. For all other start dates, students must be 17 years old on the published start date of the programme.

- › Progress to Year 1 of a wide range of undergraduate degrees
- › Benefit from learning in modern science laboratories at the INTO Centre

What will I study?

Chemistry (20 credits)

English for Academic Purposes (20 or 40 credits)

Mathematics for Physical Sciences and Engineering 1 (20 credits)

Mathematics for Physical Sciences and Engineering 2 (20 credits)

Physics (20 credits)

Principles of Computing (20 credits)

Study Skills and ICT (20 credits)

You will need to earn 120 credits to successfully complete your pathway programme.

For detailed module descriptions, please visit: www.intostudy.com/newcastle/courses

Special features

- › Benefit from practical learning opportunities including taster sessions, talks in Engineering and use of dedicated laboratories with modern Physics equipment such as oscilloscopes and Van de Graaff generators.
- › Get a 10" Samsung Galaxy tablet – that's yours to keep – with access to digital textbooks and interactive activities.
- › Learn in laboratories with Raspberry Pi kits where you can enjoy the practical applications of computer programming.

Prepare to progress to a degree at Newcastle University:



Specialist facilities

including 3D motion capture, robotics, nanomeasurement and engine testing



7th

in the UK for
Chemical Engineering

(The Times and The Sunday Times
Good University Guide 2017)

"The teachers prepared me well for university. It was a good introduction to writing lab reports and what to expect in exams. I really enjoyed my course, student life, and the experience of living outside my home country."

Oirat, Kazakhstan

Graduated with BEng (Hons) Electrical and Electronic Engineering from Newcastle University and now working as a Project Engineer in Kazakhstan



Progression options

You can progress to more than 50 degrees at Newcastle University from this pathway.

The following table provides information about which modules you need to study and what grades you need to achieve to be guaranteed a place at Newcastle University in September 2019. We've only included the details for some of the most popular degrees our students have progressed to.

Degree subject	Specific requirements	English level	Final academic grade %
Automation and Control BEng (Hons)	Mathematics for Physical Sciences and Engineering 1 (60%); Mathematics for Physical Sciences and Engineering 2 (60%); Foundation Physics (60%)	60	60
Chemical Engineering BEng (Hons)*	Mathematics for Physical Sciences and Engineering 1 (65%); Mathematics for Physical Sciences and Engineering 2 (65%); Chemistry (65%); Physics (65%)	65	65
Chemistry BSc (Hons) P	Mathematics for Physical Sciences and Engineering 1 (60%); Chemistry (60%)	65	55
Civil and Structural Engineering BEng (Hons)* P	Mathematics for Physical Sciences and Engineering 1 (65%); Mathematics for Physical Sciences and Engineering 2 (65%); Physics (65%)	65	65
Civil Engineering BEng (Hons)* P	Mathematics for Physical Sciences and Engineering 1 (65%); Mathematics for Physical Sciences and Engineering 2 (65%); Physics (65%)	65	65
Computer Science (Game Engineering) BSc (Hons)* P	Mathematics for Physical Sciences and Engineering 1 (50%); Mathematics for Physical Sciences and Engineering 2 (50%)	65	60
Computer Science (Mobile and Distributed Systems) BSc (Hons)* P	Mathematics for Physical Sciences and Engineering 1 (50%); Mathematics for Physical Sciences and Engineering 2 (50%)	65	60
Computer Science (Security and Resilience) BSc (Hons)* P	Mathematics for Physical Sciences and Engineering 1 (50%); Mathematics for Physical Sciences and Engineering 2 (50%)	65	60
Computer Science (Software Engineering) BSc (Hons) P	Mathematics for Physical Sciences and Engineering 1 (50%); Mathematics for Physical Sciences and Engineering 2 (50%)	65	60
Computer Science BSc (Hons)* P	Mathematics for Physical Sciences and Engineering 1 (50%); Mathematics for Physical Sciences and Engineering 2 (50%)	65	60
Digital Electronics BEng (Hons)	Mathematics for Physical Sciences and Engineering 1 (60%); Mathematics for Physical Sciences and Engineering 2 (60%); Foundation Physics (60%)	60	60
Earth Science BSc (Hons)* P	Mathematics for Physical Sciences and Engineering 1 (55%); Mathematics for Physical Sciences and Engineering 2 (55%)	65	65
Electrical and Electronic Engineering with Industrial Project BEng (Hons)	Mathematics for Physical Sciences and Engineering 1 (60%); Mathematics for Physical Sciences and Engineering 2 (60%); Physics (60%)	60	60
Electrical and Electronic Engineering with Industrial Project MEng (Hons)	Mathematics for Physical Sciences and Engineering 1 (65%); Mathematics for Physical Sciences and Engineering 2 (65%); Physics (65%)	60	60
Electronic Communications BEng (Hons)	Mathematics for Physical Sciences and Engineering 1 (60%); Mathematics for Physical Sciences and Engineering 2 (60%); Physics (60%)	60	60
Electronic Communications with Industrial Project MEng (Hons)	Mathematics for Physical Sciences and Engineering 1 (65%); Mathematics for Physical Sciences and Engineering 2 (65%); Physics (65%)	60	60
Electronics and Computer Engineering with Industrial Project BEng (Hons)	Mathematics for Physical Sciences and Engineering 1 (65%); Mathematics for Physical Sciences and Engineering 2 (65%); Physics (65%)	60	60
Electronics and Computer Engineering BEng (Hons)*	Mathematics for Physical Sciences and Engineering 1 (60%); Mathematics for Physical Sciences and Engineering 2 (60%); Physics (60%)	60	60
Geographic Information Science BSc (Hons)	Mathematics for Physical Sciences and Engineering 1 (55%); Mathematics for Physical Sciences and Engineering 2 (55%)	65	60
Marine Technology with Marine Engineering MEng (Hons)	Mathematics for Physical Sciences and Engineering 1 (65%); Mathematics for Physical Sciences and Engineering 2 (65%); Physics (65%)	60	60
Marine Technology with Marine Engineering BEng (Hons)	Mathematics for Physical Sciences and Engineering 1 (55%); Mathematics for Physical Sciences and Engineering 2 (55%); Physics (55%)	60	60
Marine Technology with Naval Architecture BEng (Hons)	Mathematics for Physical Sciences and Engineering 1 (55%); Mathematics for Physical Sciences and Engineering 2 (55%); Physics (55%)	60	60
Marine Technology with Naval Architecture MEng (Hons)	Mathematics for Physical Sciences and Engineering 1 (65%); Mathematics for Physical Sciences and Engineering 2 (65%); Physics (65%)	60	60
Marine Technology with Offshore Engineering BEng (Hons)	Mathematics for Physical Sciences and Engineering 1 (55%); Mathematics for Physical Sciences and Engineering 2 (55%); Physics (55%)	60	60
Marine Technology with Offshore Engineering MEng (Hons)	Mathematics for Physical Sciences and Engineering 1 (65%); Mathematics for Physical Sciences and Engineering 2 (65%); Physics (65%)	60	60
Mathematics BSc (Hons)*	Mathematics for Physical Sciences and Engineering 1 (65%); Mathematics for Physical Sciences and Engineering 2 (65%)	65	60
Mechanical Engineering and Mechatronics MEng (Hons)	Mathematics for Physical Sciences and Engineering 1 (65%); Mathematics for Physical Sciences and Engineering 2 (65%); Physics (65%)	65	65
Mechanical Engineering BEng (Hons)*	Mathematics for Physical Sciences and Engineering 1 (65%); Mathematics for Physical Sciences and Engineering 2 (65%); Physics (65%)	65	65
Mechanical Engineering with Biomedical Engineering MEng (Hons)	Mathematics for Physical Sciences and Engineering 1 (65%); Mathematics for Physical Sciences and Engineering 2 (65%); Physics (65%)	65	65
Mechanical Engineering with Energy MEng (Hons)	Mathematics for Physical Sciences and Engineering 1 (65%); Mathematics for Physical Sciences and Engineering 2 (65%); Foundation Physics (65%)	65	65
Physics BSc (Hons)*	Mathematics for Physical Sciences and Engineering 1 (65%); Mathematics for Physical Sciences and Engineering 2 (65%); Physics (65%)	60	60
Theoretical Physics BSc (Hons)*	Mathematics for Physical Sciences and Engineering 1 (65%); Mathematics for Physical Sciences and Engineering 2 (65%); Physics (65%)	60	60

P Placement year option available.

* Also available as an integrated Master's with the same requirements.

Can't see the degree you want to study?
www.intostudy.com/newcastle/courses

Start dates

June, September and January

Programme length3 terms or approximately 9 months
4 terms or approximately 12 months**Class hours**

21 hours per week minimum

Class sizeMaximum of 16 students per class
for English language teaching**Age requirement**

17 years and above*

Academic entry requirements

Satisfactory completion of A-levels, a recognised Foundation programme, first year of an overseas university degree programme with good grades, or equivalent.

Portfolio guidelines:

You will be required to provide a portfolio as part of the application. This should document your experiences and the expertise you have gained in previous studies. It should demonstrate a range of core skills and a basic understanding of architecture.

For portfolio guidelines and assessment dates visit:

www.intostudy.com/ncl/architecture-portfolio-intl-dip**English language entry requirements****3 term:** IELTS 6.0 (with a minimum of 5.5 in writing) or equivalent**4 term:** IELTS 5.5 (with a minimum of 5.0 in writing) or equivalent

If you do not meet the minimum English language requirements you should apply for our Academic English course. See pages 34-35 for more information.

Award and validating body

Successful completion of the International Year One programme leads to the initial award of Certificate of Higher Education (FHEQ Level 4) from Newcastle University.

Tuition fees

See page 36 for course dates and prices.

For full course information visit:

www.intostudy.com/newcastle/courses

* All students commencing courses on a published September start date must be 17 years old by 31 December of that calendar year. For all other start dates, students must be 17 years old on the published start date of the programme.

Want to find out more?

Visit our website or for help with your application, contact our Admissions team or your education counsellor.

Architecture

- › Progress to Year 2 of a professionally accredited undergraduate degree
- › Gain hands-on experience through practical-based learning in the INTO Centre Architecture Studio

What will I study?

Architectural Communication (20 credits)

Architectural Design 1 (20 credits)

Architectural Design 2 (20 credits)

Architecture History and Theory (20 credits)

Architecture Technology (20 credits)

English for Academic Purposes (20 credits)

You will need to earn 120 credits to successfully complete your pathway programme.

For detailed module descriptions, please visit: www.intostudy.com/newcastle/courses**Special features**

- › Learn through an open design-studio culture, with an emphasis on the development of manual creativity and design skills.
- › Benefit from practical learning as you're introduced to construction materials and technologies, research methods and computer-aided drawing.
- › Attend degree shows, public lectures and research workshops at the School of Architecture, Planning and Landscape.
- › Have the opportunity to demonstrate imaginative design responses to user needs within a natural and/or built context through practical projects.
- › Benefit from access to the School of Architecture, Planning and Landscape's brand new state of the art workshop on campus.
- › Gain insight into the real world of architecture through visits from external architects.

Prepare to progress to a degree at Newcastle University:

6th

in the UK for Architecture

(The Times and The Sunday Times
Good University Guide 2017)

Top 150

in the world for Architecture

(QS World University Rankings by Subject 2017)

Progression options

The following table provides information about which modules you need to study and what grades you need to achieve to be guaranteed a place at Newcastle University in September 2019.

Degree subject	Specific requirements	English level	Final academic grade %
Architecture BA (Hons)	60 average from Architectural Design 1 and 2, with no less than 50 in each module	65	60
Architecture and Urban Planning BA (Hons)	No less than 50 in each module	65	60

Find the most up-to-date information here:
www.intostudy.com/newcastle/courses

Business

- › Progress to Year 2 of an undergraduate degree at triple-accredited Newcastle University Business School
- › Learn how to apply theory in practice through project work

What will I study?

Academic and Professional Development (20 credits)

English for Academic Purposes (20 credits)

Introduction to Economics (20 credits)

Management and Organisation (20 credits)

Marketing (20 credits)

Quantitative Methods (20 credits)

You will need to earn 120 credits to successfully complete your pathway programme.

For detailed module descriptions, please visit: www.intostudy.com/newcastle/courses**Special features**

- › Benefit from practical learning including access to Mintel and business journals such as the Journal of Business Management, Marketing Week and the Harvard Business Review.
- › Learn to apply your knowledge through projects, including researching, planning and writing a strategic marketing plan for a new product idea.
- › Consider the different ways in which data can be collected, analysed and presented, and become familiar with standard statistical packages such as Minitab.
- › Have the opportunity to apply for the Work Skills Placement Scheme at Santander Universities bank. If successful you will gain an understanding of how a bank operates and develop your business acumen, strategic thinking and teamwork skills.

Prepare to progress to a degree at Newcastle University:

6th

in the UK for Marketing

(The Complete University Guide 2018)



Top 25

in the UK for Business and
Management Studies

(The Complete University Guide 2018)

Progression options

The following table provides information about the grades you need to achieve to be guaranteed a place at Newcastle University in September 2019.

Degree subject	Specific requirements	English level	Final academic grade %
Business Management BA (Hons)	No less than 40 in each module	65	55
Marketing and Management BSc (Hons)	No less than 40 in each module	65	55
Marketing BSc (Hons)	No less than 40 in each module	65	55

Find the most up-to-date information here:
www.intostudy.com/newcastle/courses**Start dates**

June, September and January

Programme length3 terms or approximately 9 months
4 terms or approximately 12 months**Class hours**

21 hours per week minimum

Class sizeMaximum of 16 students per class
for English language teaching**Age requirement**

17 years and above*

Academic entry requirements

Satisfactory completion of A-levels, a recognised Foundation programme, first year of an overseas university degree programme with good grades, or equivalent.

English language entry requirements**3 term:** IELTS 6.0 (with a minimum of 5.5 in writing) or equivalent**4 term:** IELTS 5.5 (with a minimum of 5.0 in writing) or equivalent

If you do not meet the minimum English language requirements you should apply for our Academic English course. See pages 34-35 for more information.

Award and validating body

Successful completion of the International Year One programme leads to the initial award of Certificate of Higher Education (FHEQ Level 4) from Newcastle University.

Tuition fees

See page 36 for course dates and prices.

For full course information visit:

www.intostudy.com/newcastle/courses

* All students commencing courses on a published September start date must be 17 years old by 31 December of that calendar year. For all other start dates, students must be 17 years old on the published start date of the programme.

Want to find out more?

Visit our website or for help with your application, contact our Admissions team or your education counsellor.

Architecture

- › Progress to a range of postgraduate degrees that develop critical thinking around your own interests
- › Gain hands-on experience through practical-based learning in the INTO Centre Architecture Studio

What will I study?

Architecture 1 (20 credits)
 Architecture 2 (20 credits)
 Architecture, History and Culture (20 credits)
 English for Academic Purposes (40 credits)
 Professional Studies for Architecture (20 credits)

You will need to earn 120 credits to successfully complete your pathway programme.
 For detailed module descriptions, please visit: www.intostudy.com/newcastle/courses

Special features

- › Have the opportunity to transfer into architecture from related backgrounds.
- › Attend degree shows, public lectures and research workshops at the School of Architecture, Planning and Landscape.
- › Learn through lectures, seminars, group work and independent research that will introduce you to more complex architectural settings.
- › Benefit from practical learning with projects that have elements of architectural design, urban planning and landscape architecture.

Prepare to progress to a degree at Newcastle University:



Top 5

in the UK for 'research power' in Architecture, Built Environment and Planning

(Research Excellence Framework 2014)



11th

in the UK for 'quality of research' in Architecture, Built Environment and Planning

(Research Excellence Framework 2014)

"As an architect, with experience of teaching at the School of Architecture, Planning and Landscape, I believe the Graduate Diploma is a challenging, yet exciting, programme. It encourages students to experiment, explore and develop their own architectural design philosophy by applying an interdisciplinary, holistic approach towards urban design."

Smajo Beso, Module Leader, Graduate Diploma in Architecture



Progression options

You can progress to 13 degrees at Newcastle University from this pathway. The following table provides information about which modules you need to study and what grades you need to achieve to be guaranteed a place at Newcastle University in September 2019.

Degree subject	Specific requirements	English level	Final academic grade %
Architecture MArch	70% minimum from Architecture 1 and Architecture 2. Interview required	65 with 60 in all subskills	60
Architecture Planning and Landscape (Design route) MA	60% minimum in Architecture 1 and Architecture 2	65 with 60 in all subskills	55
Architecture Planning and Landscape (Non-design route)* MA	None	65 with 60 in all subskills	60
Creative Arts Practice* MA	None	65 with 6.0 in writing and speaking	60
International Spatial Planning* MSc	None	65 with 60 in all subskills	60
Landscape Architecture Studies MA	60% minimum in Architecture 1 and Architecture 2	65 with 60 in all subskills	55
Planning for Sustainability and Climate Change* MSc	None	65 with 60 in all subskills	60
Sustainable Buildings and Environments MSc	60% minimum in Architecture 1 and Architecture 2	65 with 60 in all subskills	55
Town Planning* MSc	None	65 with 60 in all subskills	60
Urban Design MA	60% minimum in Architecture 1 and Architecture 2	65 with 60 in all subskills	55
Urban Energy Technology and Policy* MRes	None	65 with 60 in all subskills	60
Urban Energy Technology and Policy (Planning) MSc	None	65 with 60 in all subskills	60
Urban Energy Technology and Policy (Architecture) MSc	None	65 with 60 in all subskills	55
Urban Energy Technology and Policy* MSc	None	65 with 60 in all subskills	60

* You can also progress to this degree from the Business and Humanities pathway - see page 30.

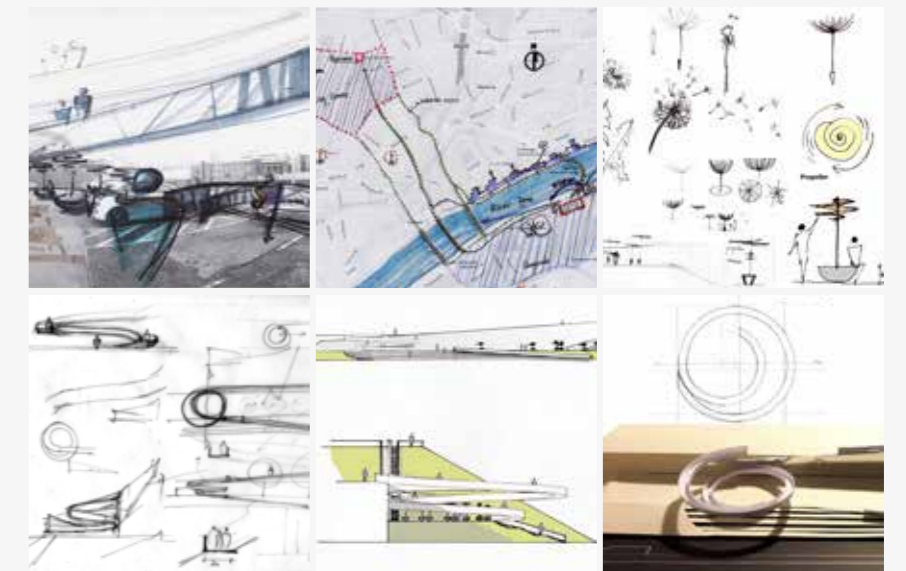


"The INTO architecture programmes are the ideal platform for international students to get prepared for further studies at Newcastle University."

Qiaoling, China
 Completed International Graduate Diploma and progressed to Architecture Planning and Landscape (Design Route) at Newcastle University

My portfolio

"The programme was challenging, but it made me more confident professionally and personally. I gained a lot more than I expected!"



Start dates

September and January

International Graduate Diploma with Pre-sessional English
 June

Programme length

3 terms or approximately 9 months

International Graduate Diploma with Pre-sessional English
 4 terms or approximately 12 months

Class hours

21 hours per week

Class size

Maximum of 16 students per class for English language teaching

Academic entry requirements

A pass in an undergraduate degree or a Diploma (3-5 years) with suitable grades.

Portfolio guidelines

Design route programmes: a portfolio and curriculum vitae (CV) is required. For guidance on the portfolio requirements visit:

www.intostudy.com/ncl/architecture-portfolio-grad-dip

Non-design route programmes: a statement outlining your academic achievements, research projects, and evidence of relevant skills and experience is required.

Students intending to progress to Creative Arts Practice:

Previous study in a relevant academic discipline is required, as well as an electronic portfolio of creative work. Applicants with non-standard qualifications and relevant work experience will be considered on an individual basis.

English language entry requirements

3 term: IELTS 5.5 (with a minimum of 5.5 in all subskills) or equivalent

4 term: IELTS 5.0 (with a minimum of 5.0 in all subskills) or equivalent

If you do not meet the minimum English language requirements you should apply for our Academic English course. See pages 34-35 for more information.

Please note that in addition to the UKVI IELTS, INTO is able to accept other English language qualifications. For more information on accepted qualifications please see: www.intostudy.com/self-alternatives

Award and validating body

Successful completion of the International Graduate Diploma programme leads to the award of International Graduate Diploma in Higher Education (FHEQ Level 6) from Newcastle University.

Tuition fees

See page 3366 for course dates and prices.

For full course information visit:

www.intostudy.com/newcastle/courses

Want to find out more?

Visit our website or for help with your application, contact our Admissions team or your education counsellor.

Find the most up-to-date information here:
www.intostudy.com/newcastle/courses

Start dates

September and January

International Graduate Diploma with Pre-sessional English
June

Programme length

3 terms or approximately 9 months

International Graduate Diploma with Pre-sessional English
4 terms or approximately 12 months

Class hours

21 hours per week

Class size

Maximum of 16 students per class for English language teaching

Academic entry requirements

A pass in an undergraduate degree or a Diploma (3-5 years) with suitable grades.

Previous study in a relevant academic discipline or relevant industry experience is required for those degrees marked with a * in the table opposite.

English language entry requirements

3 term: IELTS 5.5 (with a minimum of 5.5 in all subskills) or equivalent

4 term: IELTS 5.0 (with a minimum of 5.0 in all subskills) or equivalent

If you do not meet the minimum English language requirements you should apply for our Academic English course. See pages 34-35 for more information.

Please note that in addition to the UKVI IELTS, INTO is able to accept other English language qualifications. For more information on accepted qualifications please see: www.intostudy.com/self-alternatives

Award and validating body

Successful completion of the International Graduate Diploma programme leads to the award of International Graduate Diploma (FHEQ Level 6) from Newcastle University.

Tuition fees

See page 36 for course dates and prices.

For full course information visit:

www.intostudy.com/newcastle/courses

Business and Humanities

- > Progress to an internationally-focused postgraduate degree in business, finance, journalism and more
- > Learn how theory is applied in practice through guest lectures from industry experts

What will I study?

Business and Management (20 credits)
English for Academic Purposes (40 credits)
Financial Analysis (10 credits)
International Relations (10 credits)
Social and Cultural Studies (20 credits)
Study and Research Skills (30 credits)
Economics (20 credits)

You will need to earn 120 credits to successfully complete your pathway programme. For detailed module descriptions, please visit: www.intostudy.com/newcastle/courses

Special features

- > Benefit from links with local businesses like cosmetics retailer Lush, and have the opportunity to attend guest lectures and site visits.
- > Develop your independent study skills in semester 2, when you will have fewer formal classes and more one-to-one tutorial support.
- > Benefit from individual and group tutorials in each subject where you will get help and advice on your studies in that subject.
- > Research and write a 5,000 word essay related to your intended future study. Through the writing process you'll have the support of a supervisor who will advise and guide you.

Prepare to progress to a degree at Newcastle University:



6th

in the UK for 'research power' in Modern Languages and Linguistics

(Research Excellence Framework 2014)



97%

of 'research outputs' in Business and Management Studies are internationally recognised

(Research Excellence Framework 2014)

"INTO helped me to understand what the British education system is like, the methods of assessment and what is demanded of students. Without INTO my postgraduate degree would have been a real struggle."

Anna, Ukraine

Graduated with MA International Business Management from Newcastle University and now working as a Junior Consultant for PwC in Ukraine



Progression options

You can progress to more than 50 degrees at Newcastle University from this pathway. The following table provides information about the grades you need to achieve to be guaranteed a place at Newcastle University in September 2019. As well as the degrees listed below, you can also progress to the degrees marked * on page 29 from this pathway.

Degree subject	Specific requirements	English level	Final academic grade %
Accounting, Finance and Strategic Management MSc	None	65 with 60 in all subskills	60
Art Museum and Gallery Practice* MPrac	None	65 with 60 in writing and speaking	60
Art Museum and Gallery Studies* MA	None	65 with 60 in writing and speaking	60
Cross-Cultural Communication and Media Studies MA	None	65 with 60 in writing	60
Cross-Cultural Communication MA	None	65 with 60 in writing	60
Cross-Cultural Communication and International Marketing MA	None	65 with 60 in writing	60
Cross-Cultural Communication and Education MA	None	65 with 60 in writing	60
Cross-Cultural Communication and Applied Linguistics MA	None	65 with 60 in writing	60
Cross-Cultural Communication and International Relations MA	None	65 with 60 in writing	60
Cross-Cultural Communication and International Management MA	None	65 with 60 in writing	60
E-Business (E-Marketing) MSc	None	65 with 60 in all subskills	60
E-Business (Information Systems)* MSc	None	65 with 60 in all subskills	60
E-Business MSc	None	65 with 60 in all subskills	60
Education: International Perspectives (Technology in Education) MA	None	65 with 60 in writing	60
Education: International Perspectives (Leadership Management) MA	None	65 with 60 in writing	60
Education: International Perspectives (Teaching and Learning) MA	None	65 with 60 in writing	60
European Union Studies MA	None	65	60
Global Human Resource Management MSc	None	65 with 60 in all subskills	60
Heritage Practice MPrac	None	65 with 60 in writing and speaking	60
Heritage Studies MA	None	65 with 60 in writing and speaking	60
Human Geography Research MA	None	65	60
International Business Law* LLM	No module less than 60%	65 with 60 in writing	
International Business Management MSc	None	65 with 60 in all subskills	60
International Financial Analysis MSc	None	65 with 60 in all subskills	60
International Law* LLM	No module less than 60%	65 with 60 in writing	60
International Marketing MSc	None	65 with 60 in all subskills	60
International Multimedia Journalism MA	None	65 with 60 in writing and speaking	60
International Political Economy MA	None	65	60
International Politics (Critical Geopolitics) MA	None	65	60
International Politics (Globalisation, Poverty and Development) MA	None	65	60

* Previous study in a relevant academic discipline or relevant industry experience is required.

Continued

Degree subject	Specific requirements	English level	Final academic grade %
International Politics (Global Justice and Ethics) MA	None	65	60
International Relations MA	None	65	60
Law* LL.M	No module less than 60%	65 with 60 in writing	65
Marine Transport Management* MSc	None	65 with 60 in all subskills	60
Media and Journalism MA	None	65 with 60 in writing and speaking	60
Media and Public Relations MA	None	65 with 60 in writing and speaking	60
Museum Practice MPrac	None	65 with 60 in writing and speaking	60
Museum Studies MA	None	65 with 60 in writing and speaking	60
Politics (Research) MA	None	65	60
Regional Development and Spatial Planning MA	None	65 with 60 in all subskills	60
Sociology MA	None	65	60
Transport Planning and Business Management* MSc	You will be required to pass a University Health and Safety test	65 with 60 in all subskills	60
Transport Planning and the Environment* MSc	You will be required to pass a University Health and Safety test	65 with 60 in all subskills	60
Transport Planning and Engineering* MSc	You will be required to pass a University Health and Safety test	65 with 60 in all subskills	60
Transport Planning and Intelligent Transport Systems (ITS)* MSc	You will be required to pass a University Health and Safety test	65 with 60 in all subskills	60
Transport Planning and Modelling* MSc	None	65 with 60 in all subskills	60
Urban Energy Technology and Policy (Engineering)* MSc	None	65 with 60 in all subskills	60
World Politics and Popular Culture MA	None	65	65

* Previous study in a relevant academic discipline or relevant industry experience is required.

"The most important thing I learned was essay writing skills. On my postgraduate degree programme I felt more comfortable than my classmates because I was so familiar with academic essay writing."

Yang, China

Graduated with MA International Financial Analysis from Newcastle University and now a PhD Researcher in the Quantitative and Applied Spatial Economic Research laboratory (QASER) at UCL



Find the most up to date information here:
www.intostudy.com/newcastle/courses

Music

- › Progress to a postgraduate degree at one of the best universities in the UK to study music
- › Study in a department where over 70% of Music research is 'world leading' or 'internationally excellent'

What will I study?

Core modules

Creative Practice (20 credits)
 English for Academic Purposes (40 credits)
 Harmony and Analysis (10 credits)
 Music in Context (20 credits)
 Study and Research Skills (30 credits)

You will need to earn 120 credits to successfully complete your pathway programme.

For detailed module descriptions, please visit: www.intostudy.com/newcastle/courses

Special features

- › Benefit from a dedicated INTO practice space as well as access to the University's music practice facilities.
- › Attend and participate in regular concerts given by students of Newcastle University's International Centre for Music Studies.
- › Become part of a vibrant music community, which has strong links with key music venues such as the Sage Gateshead, home of the renowned Royal Northern Sinfonia.
- › Learn from music specialists and benefit from one-to-one tuition from experienced tutors and composers.

Prepare to progress to a degree at Newcastle University:

£

4.5 million

investment in purpose-built Music Studios



75%

of 'research outputs' in Music are 'world-leading' or 'internationally excellent'

(Research Excellence Framework 2014)

Progression options

You can progress to the following Music degree at Newcastle University from this pathway. The table provides information about what grades you need to achieve to be guaranteed a place at Newcastle University in September 2019.

Degree subject	Specific requirements	English level	Final academic grade %
Music MMus	None	65 with 65 in writing	65

Find the most up-to-date information here:
www.intostudy.com/newcastle/courses

Start dates

September and January

International Graduate Diploma with Pre-sessional English
 June

Programme length

3 terms or approximately 9 months

International Graduate Diploma with Pre-sessional English
 4 terms or approximately 12 months

Class hours

21 hours per week minimum

Class size

Maximum of 16 students per class for English language teaching

Academic entry requirements

A pass in an undergraduate degree or a Diploma (3-5 years) with suitable grades.

Relevant music background

You will need to submit either a performance video or a composition portfolio, depending on your intended focus in the Creative Practice module, and a separate curriculum vitae (CV).

For guidance on the requirements, please visit: www.intostudy.com/ncl/music-grad-dip

Submissions that do not comply with the guidelines will not be considered suitable and applicants will be required to resubmit.

English language entry requirements

3 term: IELTS 5.5 (with a minimum of 5.0 in all subskills) or equivalent

4 term: IELTS 5.0 (with a minimum of 4.5 in all subskills) or equivalent

If you do not meet the minimum English language requirements you should apply for our Academic English course. See pages 34-35 for more information.

Please note that in addition to the UKVI IELTS, INTO is able to accept other English language qualifications. For more information on accepted qualifications please see: www.intostudy.com/self-alternatives

Award and validating body

Successful completion of the International Graduate Diploma programme leads to the award of Graduate Diploma of Higher Education (FHEQ Level 6) from Newcastle University.

Tuition fees

See page 36 for course dates and prices.

For full course information visit: www.intostudy.com/newcastle/courses

Want to find out more?

Visit our website or for help with your application, contact our Admissions team or your education counsellor.

Academic English

Start dates

July, September, January, April and June

Course length

1-4 terms

A term typically includes 10 teaching weeks plus orientation and reading days. The course for July entry includes 16 teaching weeks.

Class hours

30 learning hours per week, with 25 hours of taught lessons plus an additional 5 hours online guided study.

Age requirement

16 years or above. You must also meet the minimum age requirements for your chosen academic programme.

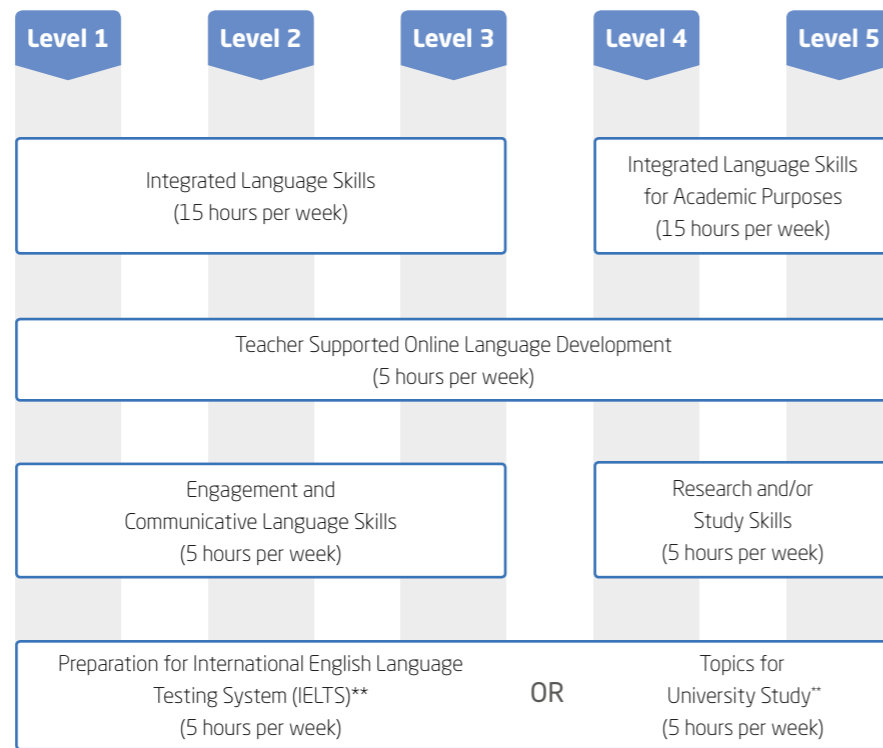
Level

From IELTS 3.0



- > An intensive course offering rapid progress of up to one IELTS band per term
- > Blend of traditional face-to-face contact and online learning
- > A personalised programme designed to meet your individual learning needs, with five tailored study levels
- > New 16 week course available in Summer 2018, preparing you for entry to pathways commencing in January*

* This course is recommended if you need to increase your level in two or more subskills.



** These electives may be offered online during certain periods.

Special features

- > Develop the language fluency and confidence you need to progress to university.
- > Gain the skills and knowledge needed for examination success.
- > Familiarise yourself with subject content related to your future studies to help you prepare for your academic programme.
- > 24/7 access to 'MyINTO', our interactive online learning platform, providing specially-designed, high-quality online materials that reflect what you study in class, giving you the flexibility to study at times that suit you and study alongside other students outside of class.
- > A standardised online assessment, developed in partnership with Cambridge English, to test all four core language skills throughout your studies enabling your progress to be accurately monitored.
- > Continue to develop your confidence and fluency outside of the classroom through a range of less formal learning opportunities, including a diverse social programme.
- > Improve your language skills pre-arrival with free access to INTO's Get Ready for English programme.

Rapid progress

The speed at which you develop will depend on how long you study with us, your current level, as well as how engaged you are. If you attend all of your classes, complete the exercises set by your teachers and make full use of our digital learning platform, you can expect to progress by up to one IELTS band per term.

Progression to academic study

Once you have reached the level required and met all other requirements, you may progress to your INTO pathway programme. You can also use your test results from Academic English for entry to Newcastle University.



Get Ready for English programme

Our free online course is a great way to improve your English language skills before you arrive in the UK, or if you are preparing to take an English language test in your home country, the course will help you to practise in your own time.

- > Gain a better understanding of your level in listening, speaking, reading and writing.
- > Receive instant, personalised feedback on listening and reading tasks.
- > Receive feedback on writing and speaking tasks from UK based tutors within 48 hours of submission.
- > 24/7 access to all course content through the MyINTO platform, so you can choose when to study and all at your own pace.

To find out more, visit:

www.intostudy.com/get-ready-for-english


"Classes are small groups of around 16 students in a class, and are interactive, communicative and quite active. We expect the students to be really involved."



Kevin Conroy, Centre Director

Find the most up-to-date information here:
www.intostudy.com/newcastle/courses

"After studying at INTO Newcastle University, my English has improved significantly. I feel more comfortable in speaking, more confident in writing, and ready to start my academic study."



Harwan, Iraq
Completed Academic English and progressed to Electrical Power at Newcastle University



Want to find out more?

Visit our website or for help with your application, contact our Admissions team or your education counsellor.

How to apply

Applying for your course is easy



Apply via your local INTO educational counsellor

If you would like us to put you in contact with one of our counsellors, please contact us.



Download our application form

Post or email your completed application form. You can download the application form from: www.intostudy.com/newcastle/apply-pdf



Apply online

Complete our online application form: www.intostudy.com/apply

CHECKLIST

- Completed application form, signed by the student or the parent/legal guardian.
- Copy(ies) of available relevant academic certificate(s) in English.
- Copy(ies) of available English language certificate(s) in English.
- Full details of previous study in the UK.
- Copy of your passport if available.
- Portfolio (for Architecture pathways only).
- CV (for Graduate Diploma applicants only).

Dates and prices

Academic programmes	June start (4 term) Thu 28 Jun 2018-Fri 14 Jun 2019	September start (4 term) Mon 24 Sep 2018-Fri 06 Sep 2019	September start (3 term) Mon 24 Sep 2018-Fri 14 Jun 2019	January start (3 term) Mon 07 Jan 2019-Fri 06 Sep 2019
International Foundation				
Architecture	£24,250	£24,400	£19,500	£19,500
Biological and Biomedical Sciences	£24,250	£24,400	£19,500	£19,500
Business and Management	£23,205	£23,400	£18,500	£18,500
Humanities and Social Sciences	£23,205	£23,400	£18,500	£18,500
Physical Sciences and Engineering	£24,250	£24,400	£19,500	£19,500
International Year One				
Architecture	£24,250	£24,400	£19,500	£19,500
Business	£23,205	£23,400	£18,500	£18,500
International Graduate Diploma				
Architecture	£24,250	£24,400	£19,500	£19,500
Business and Humanities	£23,205	£23,400	£18,500	£18,500
Music	£23,205	£23,400	£18,500	£18,500

Academic English	
Dates	Tuition price
July start (16 weeks) Thu 26 Jul 2018-Fri 07 Dec 2018	1 term: £4,900
September start Mon 24 Sep 2018-Fri 07 Dec 2018	16 weeks: £7,600
January start Mon 07 Jan 2019-Fri 22 Mar 2019	
April start Thu 04 Apr 2019-Fri 14 Jun 2019	
June start Thu 27 Jun 2019-Fri 06 Sep 2019	

Estimated cost of attendance for 2018-2019						
	Tuition	Accommodation	Books and fees	Insurance	Total	
International Foundation (3 term)	£18,500-£19,500	£6,020-£8,930	£370-£770	£357	£25,247-£29,557	
International Year One (3 term)	£18,500-£19,500	£6,020-£8,930	£370	£357	£25,247-£28,557	
Graduate Diploma (3 term)	£18,500-£19,500	£6,020-£8,930	£370	£357	£25,247-£28,557	
Academic English (1 term)	£4,900	£1,794-£2,585	£85	£122	£6,901-£7,692	

Accommodation prices				
	Single bedroom studio	Single study bedroom	Shared studio (2 bedroom unit)	Homestay
Academic programmes				
June start (4 term)**	£11,664	£9,405	£8,649	£9,519
September start (4 term)	£11,750	£9,350	£8,600	£9,500
September start (3 term)	£8,930	£7,106	£6,536	£7,220
January start (3 term)	£8,225	£6,545	£6,020	£6,650
English language courses*				
Academic English (16 weeks)**	£5,319	£4,356	£4,005	£4,389
Academic English, (1 term)	£2,451-£2,585	£1,950-£2,057	£1,794-£1,892	£1,981-£2,090

Other fees	
	Price
Airport pickup	
Newcastle International Airport	£35
Course-related fees	
Enrolment fee*	£150
Textbooks (3 term academic programme)	£220
Textbooks (4 term academic programme)	£280
Textbooks (Academic English, 1 term)	£85
Textbooks (Academic English, 16 weeks)	£130
Studio fee (art-based courses)	£400
Lab fee (science-based courses)	£400

Insurance			
Period of cover	Cost Standard	Period of cover	Cost Standard
Up to 3 months	£121.98	Up to 6 months	£195.35
Up to 4 months	£144.24	Up to 12 months	£356.95

For full details of coverage and costs for alternative periods of cover, visit: www.intostudy.com/fees

* The price will depend on your start date and length of study. Prices shown are only for one term. Vacation weeks in between terms are extra and will be charged at the weekly accommodation price.
** Please note the accommodation contract starts on the Wednesday prior to the start date of the course.

* Per academic programme, charged upon confirmation. Please see clause 35 of the terms and conditions, which are available at www.intostudy.com/newcastle/terms

INTO NEWCASTLE UNIVERSITY

Please complete all relevant sections of the application form in full.

You should return your application pack to your local education counsellor or directly to the INTO Admissions Office at least one month before your intended start date.

Please send to: INTO Newcastle University Admissions, One Gloucester Place, Brighton, East Sussex, BN1 4AA, UK
T: +44 1273 876040 | Education counsellors: ukadmissions@intoglobal.com | All other enquiries: ukes@intoglobal.com

You can also apply online at www.intostudy.com/newcastle/apply

Education counsellor's stamp

Counsellor's name:

Counsellor's email:

Section 1 Student details (You must complete this section accurately otherwise your visa application may be affected)

Title (Mr/Mrs/Ms) _____ If **yes**, please provide full details _____

Family name _____ Permanent country of residence _____

Other names _____ Student's home address (you must complete this accurately as it may affect your visa application) _____

Gender M F Date of birth / / (dd/mm/yy) Current age _____

City _____

Postcode _____ Country _____

Name as written on passport _____ Student's telephone numbers in country of residence (including international code) _____

Passport number _____ Tel _____ Mobile telephone _____

Nationality / citizenship _____ Student's email address _____

Do you have or are you applying for permanent residence in the UK? Yes No We want to keep you informed about all our courses, promotions and news. Please confirm your preference(s) for how you would like to be contacted. Please tick all that apply. You can unsubscribe from these communications at any point by contacting us.

Are you a US citizen or a US permanent resident? Yes No Post Email Telephone SMS or other electronic communications

Do you have dual nationality status? Yes No

Section 2 Parent/Spouse/Family member and Sponsor details

Title (Mr/Mrs/Ms) _____ Postcode _____ Country _____

Family name _____ Telephone (including international code) _____

Other names _____ Email address _____

Relationship to student _____

Contact address _____

City _____

How do you intend to fund your studies?

Self Family Employer* Sponsor*

* Name of employer/sponsor: _____

Section 3 INTO programme selection

Academic programmes

International Foundation programme

- Architecture Biological and Biomedical Sciences
 Business and Management Humanities and Social Sciences
 Physical Sciences and Engineering

Please specify start date

- Jun 2018 (4 term) Sep 2018 (4 term)
 Sep 2018 (3 term) Jan 2019 (3 term)

International Year One programme

- Architecture Business

Please specify start date

- Jun 2018 (4 term) Sep 2018 (4 term)
 Sep 2018 (3 term) Jan 2019 (3 term)

International Graduate Diploma programme

- Architecture Business and Humanities Music

Please specify start date

- Sep 2018 (3 term) Jan 2019 (3 term)

International Graduate Diploma programme with Pre-session English

- Architecture Business and Humanities Music

Please specify start date

- Jun 2018 (4 term) Sep 2018 (4 term)

Please note: International Graduate Diploma applicants must submit a CV (resume) as part of their application

English language course

Academic English

- Jul 2018 (16 week) Sep 2018 Jan 2019
 Apr 2019 Jun 2019

Start date / / End date / / (dd/mm/yy)

Please specify number of terms of English

Proposed undergraduate or postgraduate programme (Needs to be completed to enable us to process your application)

Please provide the name of the degree programme you intend to study at University:

Section 4 Student's education history

Please give full details of your current or most recent school, college or university. For visa purposes we must have a full history of your academic background. Please ensure any gaps in your education are fully explained either on the application form or enclosed with your supporting documentation. All official institution transcripts, latest available results or forecast results must be submitted in English. See page 36 for details of documentation you must submit as part of your application.

I confirm that I have included full details of all of my academic studies and do not have any plans to study further prior to enrolling on my programme with INTO. I understand that failure to provide full information on my academic studies may result in a visa refusal and/or dismissal from the Centre.

Institution name _____
Dates of study / / to / / (dd/mm/yy) _____
Date you received (or will receive) your certificate / / (dd/mm/yy) _____
Highest educational qualification name _____

Language of instruction _____
Institution city/town _____
Postcode _____ Country _____
Email address _____
Have you ever studied in the UK? Yes No
If **yes**, please provide full details of study durations. Please also include a copy of your previous visa (must be completed for visa purposes).
From / / to / / (dd/mm/yy) _____
Have you ever been refused a visa for the UK? Yes No
Have you ever been refused a visa application to any country? Yes No
If **yes**, please provide full details _____

Section 5 Current English language proficiency

Please tick and enter details of your most recent English language test.
Note: students will be assessed upon arrival and study plans WILL be altered if there is any discrepancy. Please provide a copy of your certificate.

IELTS for UKVI Trinity College London Other (please specify) _____

Have you arranged to take any other English language test(s) before starting your INTO programme? Yes No
Name of exam _____
Date due to be taken / / (dd/mm/yy) _____

Section 6 Welfare

Do you have any conditions, medical or otherwise, that may impact your time in the UK? Yes No
Do you consider yourself to have a disability? Yes No
Have you been convicted of a relevant criminal offence? Yes No
If you have answered **yes** to any of the above, please provide full details with your application on a separate sheet.

Travel and medical insurance
The full cost of Uniplan Insurance will be added to the invoice unless proof of alternative adequate cover is included with the application.
Do you require Uniplan insurance to be provided? Yes No
Uniplan insurance cover commences one week before your programme start date and finishes one week after your programme end date. If you require a longer period of cover please complete the start and end dates below:
Start date / / (dd/mm/yy) End date / / (dd/mm/yy) _____

Section 7 Accommodation options

Do you require accommodation? Yes No
Please indicate the room type you would prefer by ticking 3 boxes below to indicate your 1st, 2nd and 3rd choice of accommodation. Please note that INTO aims to provide the highest preference requested but, if this is not available, INTO reserves the right to provide or suggest alternative accommodation. Confirming your accommodation early gives you the best chance of getting the room type you want.

	1st preference:	2nd preference:	3rd preference:
Shared studio (two bedroom unit)	<input type="checkbox"/>	<input type="checkbox"/>	<input type="checkbox"/>
Single study bedroom	<input type="checkbox"/>	<input type="checkbox"/>	<input type="checkbox"/>
Single bedroom studio	<input type="checkbox"/>	<input type="checkbox"/>	<input type="checkbox"/>
Homestay	<input type="checkbox"/>	<input type="checkbox"/>	<input type="checkbox"/>

Do you envisage that you will have any specific requirements in student accommodation as a result of a disability/medical condition? Yes No

Section 8 Airport pickup

Flight details including arrival date and flight number should be emailed to ukarrival.details@intoglobal.com as soon as possible. All under 18 students **must** either book an INTO airport pickup or provide evidence of alternative arrangements.

Do you require an airport pickup? (Newcastle International Airport) Yes No

INTO Giving: build your employability and make new friends

INTO Giving is a UK registered charity helping educate some of the world's poorest children. You can show how much you care about helping educate some of the world's poorest children by choosing an amount you would like to donate and have added to your invoice/financial statement.

For every penny you donate, INTO will donate another: penny for penny, pound for pound.

£22 £35 £50

YES, I am happy to receive INTO Giving project updates and newsletter by email.

Parent or Guardian communications

I confirm that my parent and/or guardian has given their permission to be contacted about our products and services which may be of interest to them. Yes No

Please then tick the relevant box(es) below and provide their personal details:

Email Telephone SMS or other electronic communications
Family name _____ Other names _____
Telephone (including international code) _____
Email address _____ Relationship to student _____

Section 9 Declaration

I declare that the information I have supplied on and with this form is complete and correct
 I have read and understood and agree to abide by the Terms and Conditions available at: www.intostudy.com/newcastle/terms

I agree to abide by the Cancellation and Refund Policy as detailed within our Terms and Conditions
 I agree to pay all tuition and accommodation and sundry expense fees as they become due
 I understand that the giving of false or incomplete information may lead to the refusal of my application or cancellation of my enrolment

I agree that copies of my academic progress and performance reports can be supplied to parents, sponsors or education counsellors without further notification Yes No

I agree that my records and achievements may be used for promotional purposes, without further notification Yes No

Your application will be processed by INTO University Partnerships. By submitting this application, you explicitly agree that your personal data (including sensitive personal data) can be processed in accordance with INTO's Privacy Policy available at: www.intostudy.com/en-gb/legal-and-privacy-policy

Signed _____ Date / / (dd/mm/yy)
(Parent/guardian) For students under 18

Or

Signed _____ Date / / (dd/mm/yy)
(Student)

Generous scholarships

Need some help with your university tuition fees? INTO Newcastle University Scholarships are designed to reward students who perform well in their studies.

You could be eligible for up to 100% of your tuition fees if successful. All students are welcome to apply, regardless of background or financial circumstances.

Centre Scholarships

- Ten centre scholarships worth up to **100%** of tuition fees.
- Available for all International Foundation pathways.
- You could be eligible if you have achieved good grades in your studies and have an unconditional offer.
- Send your completed form, along with a one page personal statement, to into.marketing@ncl.ac.uk

University Progression Scholarships

INTO Newcastle University is committed to helping talented and ambitious international students like you achieve their goal of studying at a world-class university in the UK. We believe in rewarding your success so, we're offering scholarships worth up to **£3,000** towards the tuition fees of your university degree. Each year, we offer more than **50** progression scholarships for INTO students and we hope to award many more in the future.



Visit our website for full details of our scholarships and how to apply:
www.intostudy.com/newcastle/scholarships



"Since receiving my scholarship from INTO I have been encouraged to have more confidence and motivation to continue my studies."

Aimee, Vietnam

"Achieving the scholarship has increased my confidence, which will boost me to do better in the future."

Faisal, Bangladesh



Ask INTO

With so many options it can be hard to choose the right university and course for you. Let us help you with our top tips on what you should consider when choosing to study abroad, as well as advice from our teachers and students.

Let us help you:

www.intostudy.com/askINTO



INTO»GIVING

Working across the globe, INTO Giving supports projects that increase access to education and improves the quality of teaching and learning. For more information visit

www.into-giving.com

INTO»

Through innovative partnerships with leading universities, we expand opportunities for higher education, ensuring success and transforming the lives of our students and staff.



Discover more online

www.intostudy.com/newcastle

Contact us

Enquiries and applications:
ukes@intoglobal.com or +44 1273 876040

Visit the Centre:
into@newcastle.ac.uk or +44 191 208 7535

Connect with us



RUSSELL GROUP

© INTO Newcastle University LLP, October 2017. Every effort is made to ensure that content published in this document is correct at the time of publication. However, due to circumstances beyond our control there may be instances where information contained in this document may have changed since the date of publication. The most up to date source of information is INTO Newcastle University's website which can be accessed at www.intostudy.com/newcastle. In the event that there are material changes to the information contained in this document or to the information on INTO Newcastle University's website, these changes will be highlighted in future correspondence. The information provided in this document is subject to INTO's terms and conditions which can be accessed at www.intostudy.com/newcastle/terms.

IUP 2 LLP is a limited liability partnership registered in England and Wales, registered number OC376452. Registered office: One Gloucester Place, Brighton, East Sussex, BN1 4AA, UK.

Education provider sponsor number CKTK52NUO

Education counsellor's stamp