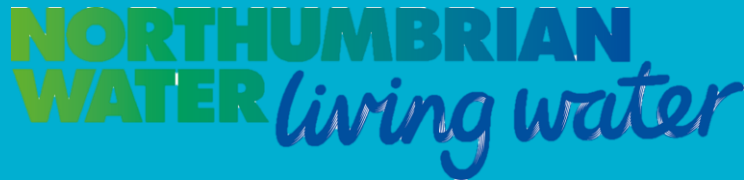


Northumbrian Water

Turner and Townsend/
Mott MacDonald



Group 1: Ciara, Chloe, Harley and Charlotte

What you did while you were there

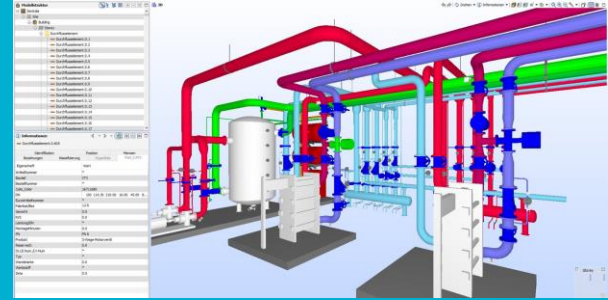
Turner and Townsend Office

Introduction

- Welcome from the representatives of Northumbrian Water's subcontractors, overview of their core values and current projects

Business Information Modelling (BIM) talk

- New technologies help businesses such as Northumbrian Water run more smoothly

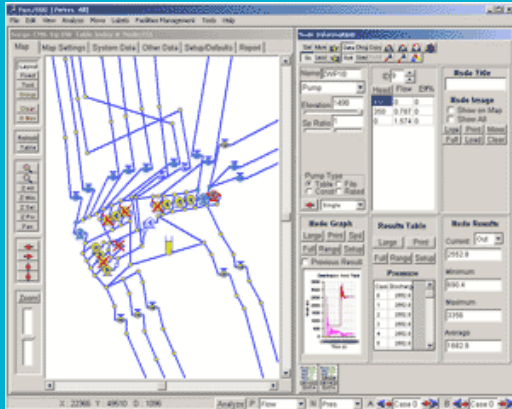


What you did while you were there

Mott MacDonald Office

Hydraulic Modelling Introduction

- How they create models for Northumbrian Water such as flood risk



What you learned about the company and role(s) you observed

Collaborative office

- Northumbrian Water and some partners (like Turner and Townsend and Mott MacDonald) share office space

Not always a degree pathway

- Lots of roles didn't need specific degrees
- BIM and Hydraulic modelling dependant on skills around data

Anything that surprised you/you didn't expect?

Turner and Townsend

- Amount of money spent on projects
- The focus on data analysis and how it's used for design

Mott MacDonald

- The logistics of mapping flooding events
- Overseas involvement- India

How this experience will help you going forward

Future Job Applications

- Gained experience in a professional setting.
- Highly relevant on a CV which will help when applying to future work shadowing or internships.

Useful Skills

- Developed communication skills.
- Gained awareness of technology important in the industry in the future.

Questions?

