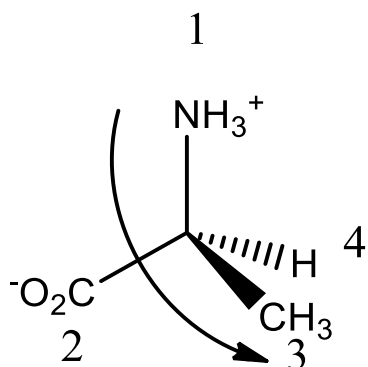


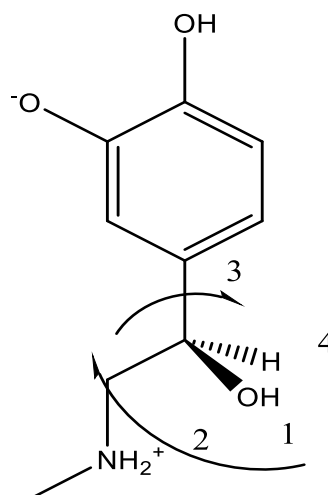
For the following questions you will be required to work out the configuration of the chiral centre assigning it R or S.

1. LALNIN23 is the crystal structure for the amino acid alanine is it and R or S enantiomer?
2. The biological molecule adrenaline ADRENL also has a chiral centre is it R or S?
3. Can citric acid CITARC have R and S isomers if so which is it?
4. Common anti-inflammatory drug ibuprofen JEKNOG10 is an S enantiomer can you show why?
5. The molecule in the following refcode LTHREO01 has 2 chiral centres can you assign these R and S?

1. S isomer

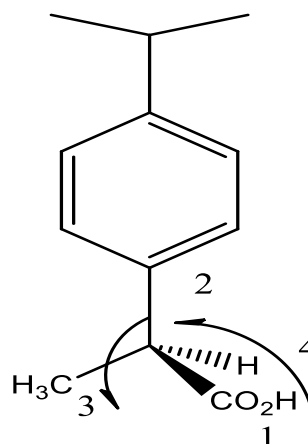


2. R isomer

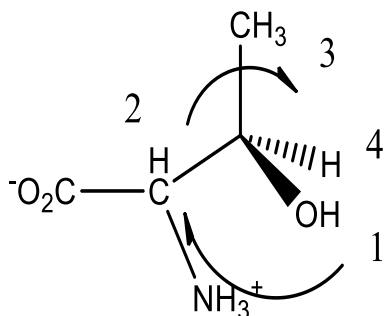


3. No chiral centres so cannot be R or S

4. S Isomer



5. A. R isomer



5. B. S Isomer

