

# Accommodation Guide 2026





Find out more



# Welcome

**Newcastle is a great city for student life. Vibrant, multicultural, and easy to get around, it's ranked in the top 5 student cities in the UK by QS Best Student Cities 2026.**

And we want you to find your perfect home here.

Living in Newcastle you'll be surrounded by world-class art, music and sport, great shopping and a food scene that's influenced by cultures from around the world.

You'll feel like you belong – one in six people is a student here – while fast road and rail links, plus direct flights to UK and international destinations, will mean home is never far away.

Living with us, you'll make memories and friends for life and be supported by our University community to have the best possible experience, especially if this is your first time living away from home.

In this Guide we've explored the different types of accommodation available to you and – because all our residences have their own character and style – we've included highlights from each of them. The information listed in this Guide is for the academic year of entry 2026-27. Thinking of coming in 2027-28? Always check our website for the most up-to-date information and prices.

There's a handy map showing how close all our accommodation is to our beautiful campus and city centre facilities, as well as a breakdown of our accommodation prices.

There's also an explanation of how you can apply for accommodation and, when you're ready to find out more, you can get the most up-to-date and detailed information about our accommodation at [ncl.ac.uk/accommodation](https://ncl.ac.uk/accommodation)

**Ready to discover what it will be like to live with us?**

For the most up-to-date information about our accommodation – and how to get in touch with us.





# Why live with us?



There are lots of reasons why you'll have a fantastic experience living with us. Here's just a few of them.

### Accommodation Guarantee

We've taken the stress out of finding somewhere to live at University – **we guarantee accommodation to all first-year undergraduate and postgraduate taught students** (eligibility criteria apply).

Find out more about our Accommodation Guarantee at [ncl.ac.uk/nclguarantee](https://ncl.ac.uk/nclguarantee)

### Different comes as standard

We all like different things and we cater for that, with over 5,500 rooms in vibrant student villages, Victorian terraces, modern city-centre apartments and well-equipped flats.

### The right price...

Our accommodation comes in all shapes and sizes to suit a variety of budgets and **our city is ranked 5th in the UK for affordability (QS Best Student Cities 2026)**.

### ...and the right location

Whether your accommodation is in the heart of our vibrant city centre, in the arty Ouseburn area, near parks and outdoor spaces, or close to restaurants and shops, great public transport links mean you're never far from University facilities.

### Hassle-free living

- utility bills included in the price of your rent (some exclusions apply)
- free wifi
- free personal possessions insurance
- flexible payment options

### Feel safe with us

Your safety is our priority – our campus Security team is on call 24/7, and our free SafeZone app connects you directly to them. Most of our residences provide on-site support during office hours and have extra safety measures in place, too. Find out more on pages 8–9.

### We'll be there for you

Our support ranges from help to settle in with us and live independently, to health and wellbeing support, as well as visa and student finance advice. Find out more on pages 8–9.

### Go greener

Newcastle University is ranked **19th in the UK and 56th in the world for sustainability (QS World University Rankings: Sustainability 2025)**. Be part of our work to create a greener, cleaner campus through sustainable and recycling initiatives at our accommodation.

### We follow the Code

We've signed up to The Student Accommodation Code, which protects your rights to safe, good-quality accommodation. For more information see [thesac.org.uk](https://thesac.org.uk)



**Top 5 city for affordability in the UK**

(QS Best Student Cities 2026)



# Your new home



## Where will you decide to call home?

We know you'll be happy wherever you live with us.

### University-owned accommodation

Owned and managed by Newcastle University and staffed by our dedicated teams. Our accommodation is centred around vibrant student villages – Park View and Kensington/ Park.

### Managed partnership accommodation

Owned by private providers, but run in partnership with us. The private provider will manage your tenancy, but we'll sort out your application and allocation.

Managed partnership accommodation may require a guarantor and an upfront payment and is subject to different terms and conditions. For more information, go to [ncl.ac.uk/accommodation/university/types](https://ncl.ac.uk/accommodation/university/types)

Please note that private accommodation – owned and managed by private landlords – is available in the city but doesn't feature in this Guide.

### Self-catered accommodation

All of our accommodation is self-catered, giving you the independence and flexibility to eat what you like at times that suit you.

However, we do have 12 cafés on campus where you can pick up something to eat. To help you save money on campus, all students get 10% off food and drink in our University cafés when using the Upay app!

The Upay app allows you to access exclusive rewards and promotions from the moment you register.

Find out more at [ncl.ac.uk/catering/save-money-on-campus](https://ncl.ac.uk/catering/save-money-on-campus)

### Take a virtual tour NOW!

Choose one of our accommodation sites and select the 'Virtual tour' section.



## Your room

The majority of our residences offer shared accommodation – that means you'll have your own bedroom, but share the communal living areas with other students.

- standard rooms share washbasin, shower and toilet facilities
- washbasin rooms have private washbasins, but shared toilet and shower facilities
- rooms with en suite facilities feature a private bathroom with shower, washbasin and toilet

All bedrooms include a bed, desk, chair, drawer unit, wardrobe and shelving.

For students with additional accommodation requirements due to a disability or health need, we have a range of accessible accommodation.

Contact us at [accommodation.medical@newcastle.ac.uk](mailto:accommodation.medical@newcastle.ac.uk) to discuss your requirements.

We also have dedicated accommodation for couples and/or families.

## Your facilities

Contemporary kitchens, laundry facilities (extra costs may apply), chill-out areas and bike storage come as standard at most of our accommodation.

Some accommodation also feature study zones, games areas, communal spaces and other great facilities. For a full list of what you can expect, check out our accommodation profiles.

[ncl.ac.uk/accommodation](https://ncl.ac.uk/accommodation)

### What will I need to bring with me?

Our accommodation is well-equipped, so don't be tempted to over pack when it's time to move in! If you bring your own TV or personal electronic device, just remember that you'll need to purchase a TV licence.

If you need help with sourcing the essentials for your accommodation, we are offering UniKitOut. UniKitOut provides quality student starter kits packed with cookware, bedding, towels and more. You can place your order and we will store it safely for you until you arrive. [unikitout.com/newcastle-uni](https://unikitout.com/newcastle-uni)



# How we support you

We want you to feel safe and supported living with us. That's why we have great teams who will help you settle in.

## University support

In University-owned accommodation, our Reception team provides on-site support during office hours, advising on any issues you might have. CCTV, entry phone systems and Help Points also keep our residences safe and secure.

Our Security team is on duty across campus at all times, and the free SafeZone app allows students to get help quickly through 'tap' alerts to first aiders, security, and support teams.

Behind the scenes our Accommodation team makes sure everything is running smoothly. And if you've got a tenancy query or financial question, our Allocations and Finance team can talk through any questions or concerns you have.

Newcastle University's Student Wellbeing teams also offer a range of services, including:

- counselling – from one-to-one sessions and workshops to self-help programmes
- disability support – including long-term health and mental health support – to access the resources and support you need
- financial support – from managing your money to help with student finance issues
- visa support – advice on your visa or immigration status

You can also access online support 24/7 through the TalkCampus mental health support network, and our iNCLude app, developed to help you create positive habits and great coping skills.

[ncl.ac.uk/wellbeing/our-support/247-support](https://ncl.ac.uk/wellbeing/our-support/247-support)

## Students' Union support

Our Support and Advice Hub and Welfare and Support Centre are based in the Students' Union and offer professional advice. And there's extra support available through the confidential listening service Nightline, which promotes an inclusive campus.

[nusu.co.uk/support](https://nusu.co.uk/support)

## Live your best ResLife

ResLife's aim is to make your first year the best it can be as you transition into higher education and independent living, while creating new friendships.

- come along to your ResLife social spaces to meet new people
- stay up to date on our Instagram @ResLife\_NCL and TikTok @ResLifeNCL
- engage with ResHacks, to master independent living
- connect with your ResLife Coordinators at our weekly ReConnect Sessions
- we were voted best in the UK for student life (Uni Compare 2026 and Whatuni Student Choice Awards 2025)

[ncl.ac.uk/nclreslife](https://ncl.ac.uk/nclreslife)



## 3rd in the UK for Accommodation

(Uni Compare Top 100 University Rankings 2026)

Find out more



The ResLife events this term were really enjoyable and thoughtfully organised. They created a welcoming environment and gave students a great opportunity to socialise, relax, and feel more connected to student life.

Jotsna  
Windsor House - Postgraduate student

# Undergraduate accommodation

Start your search with our guide to our University-owned and managed partnership accommodation.

**University-owned accommodation:** owned and managed by Newcastle University and staffed by our dedicated teams.

**Managed partnership accommodation:** owned by private providers, but run in partnership with Newcastle University. The private provider will manage your tenancy but we'll sort out your application and allocation. Please note that managed partnership accommodation is not suitable for part-year students.

The information in this guide is correct at the time of print, February 2026. The most up-to-date information and further details of our undergraduate accommodation – including virtual tours of our residences – can be found at [ncl.ac.uk/accommodation/university](https://ncl.ac.uk/accommodation/university)

You can also tour some of our accommodation in person during our Open Days and on-campus events. [ncl.ac.uk/study/meet](https://ncl.ac.uk/study/meet)



- University-owned
- Managed partnership
- En suite
- Washbasin
- Studio
- Accessible

## Marris House NE2 4BE

Contemporary halls with stylish bedrooms, kitchens, social and study zones.



From £158.20 per week



## Park Terrace NE2 4BB

Contemporary flats that have recently been refurbished in 2023, located close to the city centre; the perfect balance between comfort and practicality.



From £197.40 per week



## Kensington Terrace NE2 4BF

These stunning Victorian terraces have recently been refurbished and are in a prime location overlooking Exhibition Park.

From £197.40 per week





Undergraduate accommodation

Find out more



### Park View

NE2 4BS

Ultra-modern and spacious flats with a gaming area, study spaces, and open-plan common room.

Construction works in the surrounding area; expect noise disturbance.



From £197.40 per week



University-owned



Managed partnership



En suite



Washbasin



Studio



Accessible

### Windsor Terrace

NE2 4HE

Conveniently located flats with recently refreshed bedrooms, simply roll out of bed to the Philip Robinson Library or city centre.



From £142.80 per week



### Verde

NE4 5TH

Top of the range en suite rooms in the city centre, with facilities such as a cinema room and gym.

Building works to the exterior will take place throughout the academic year; expect noise disturbance.



From £199.00 per week



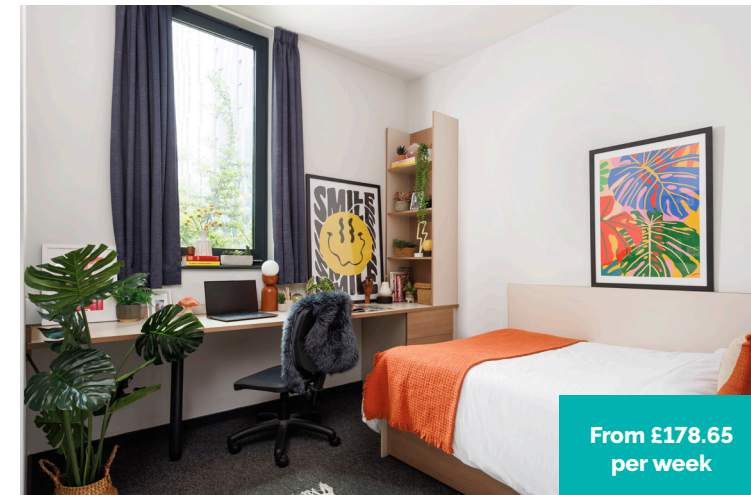
### Wellington St Plaza

NE4 5SA

Located next to Newcastle Helix, close to the Business School, this residence offers modern en suite rooms in flats shared by five or six students. Construction works in the surrounding area and works to the exterior of the building; expect noise disturbance.



From £178.65 per week



### The View

NE1 4SH

Stylish en suite rooms and a choice of social spaces, located above Tesco Express in the city centre.

Construction works in the surrounding area; expect noise disturbance.



From £197.00 per week



### Bernicia

NE1 7RS

Centrally located just a one minute walk to the Students' Union, you can find en suite undergraduate accommodation here. Bernicia is part of Newcastle University International Study Centre.



From £190.05 per week





Undergraduate accommodation

Find out more



### Byron Central

NE2 1XH

Byron Central offers en suite accommodation with a community feel and is complete with a well-equipped common area and cinema room.



From £175.13 per week



University-owned



Managed partnership



En suite



Washbasin



Studio



Accessible

### Turner Court

NE2 1DT

Located in the vibrant, arty, and student friendly Ouseburn area of Newcastle, Turner Court offers en suite accommodation complete with an on-site gym and fantastic common area.

Construction works in the surrounding area; expect noise disturbance.



From £185.00 per week



### Manor Bank

NE1 2JA

Located just minutes from the vibrant Quayside, this modern residence offers en suite rooms and an outside courtyard.

Construction works in the surrounding area; expect noise disturbance.

From £156.78 per week



### Newgate Court

NE1 5AT

Newgate Court is located in the heart of the city centre and offers modern, en suite rooms in 4-10 bedroom flats.

From £205.25 per week



# Postgraduate accommodation

Start your search with our guide to our accommodation. The information in this guide is correct at the time of print, February 2026. The most up-to-date information and further details of our postgraduate accommodation – including virtual tours of our residences – can be found at [ncl.ac.uk/accommodation](http://ncl.ac.uk/accommodation)



## Bowsden Court NE3 1RR

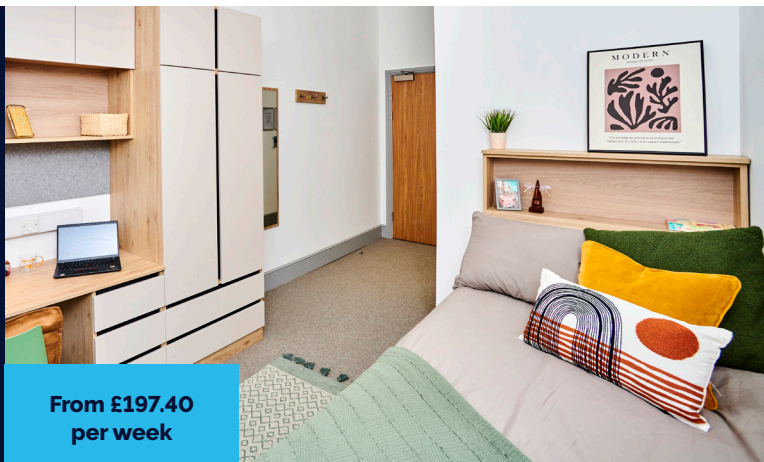
Located in the vibrant suburb of South Gosforth next to a Metro station and surrounded by handy shops and places to eat, this welcoming community is ideal for postgraduates.

From £117.60  
per week



## Grand Hotel NE1 7RE

Ever dreamed of living above a coffee shop? This convenient en suite residence is perfectly placed for city life.



From £197.40  
per week



-  University-owned
-  Managed partnership
-  En suite
-  Studio
-  Standard (no washbasin or en suite)



## Bernicia NE1 7RS

Centrally located just a one minute walk to the Students' Union, you can find studio postgraduate accommodation here. Bernicia is part of Newcastle University International Study Centre.



From £231.00  
per week





# Map


Find out more



## Key

- Park View Student Village
- Kensington/Park Student Village
- Managed partnership accommodation
- 10 mins' walk from Students' Union
- 20 mins' walk from Students' Union
- Main University campus
- City centre
- Parks and open spaces
- Newcastle Helix (innovation hub for science, technology, research and education)
- M Metro
- H Hospital (Royal Victoria Infirmary)

Take a video tour of our beautiful city-centre campus.






# Accommodation fees 2026–27

University accommodation fees include heating, electricity and water charges\*, and we provide free personal possessions insurance and wifi. Full guidelines on payment options will be detailed in your contract.

## Undergraduate accommodation

Room type	Residence	Weekly rent	Total rent	Length of contract
Washbasin	Windsor Terrace	£142.80	£5,712.00	40
	Marris House	£158.20	£6,328.00	40
	Manor Bank <sup>†</sup>	£156.78	£6,271.20	40
	Byron Central <sup>†</sup>	£175.13	£7,005.20	40
	Wellington St Plaza <sup>†</sup>	£178.65	£7,146.00	40
	Windsor Terrace	£181.65	£7,266.00	40
	Turner Court	£185.00	£7,400.00	40
En suite	The View <sup>†</sup>	£197.00	£7,880.00	40
	Kensington Terrace	£197.40	£7,896.00	40
	Park Terrace	£197.40	£7,896.00	40
	Park View	£197.40	£7,896.00	40
	Verde <sup>†</sup>	£199.00	£7,960.00	40
	Bernicia	£190.05	£7,602.00	40
	Newgate Court <sup>†</sup>	£205.25	£8,210.00	40
	Byron Central <sup>†</sup>	£182.84	£7,313.60	40
	Wellington St Plaza <sup>†</sup>	£190.78	£7,631.20	40
	The View <sup>†</sup>	£200.00	£8,000.00	40
Premium en suite	Verde <sup>†</sup>	£205.00	£8,200.00	40
	Kensington Terrace	£221.55	£8,862.00	40
	Park Terrace	£221.55	£8,862.00	40
Premium en suite 2	Wellington St Plaza <sup>†</sup>	£202.91	£8,116.40	40
Studio	Kensington Terrace	£242.55	£9,702.00	40
	Park View	£242.55	£9,702.00	40

<sup>†</sup>Requires a guarantor and advanced payment.

## Postgraduate accommodation

Room type	Residence	Weekly rent	Total rent	Length of contract
Standard	Bowsden Court	£117.60	£5,762.40	49
En suite	Bowsden Court	£173.60	£8,506.40	49
	Grand Hotel	£197.40	£9,672.60	49
Premium en suite	Grand Hotel	£221.55	£10,855.95	49
Studio	Bernicia	£231.00	£11,319.00	49

## Family accommodation

Room type	Residence	Weekly rent	Total rent	Length of contract
2-bed family flat	Bowsden Court*	£224.00	£10,304.00	46
3-bed family flat	Bowsden Court*	£239.75	£11,028.50	46

## Couple accommodation

Room type	Residence	Weekly rent	Total rent	Length of contract
2-bed family flat	Bowsden Court*	£224.00	£10,304.00	46

\*Rents in Bowsden Court family and couple accommodation exclude heating, electricity and water charges.

Fees listed are for the academic year 2026-27. Thinking of coming in 2027-28? Always check our website for updated accommodation options and prices [ncl.ac.uk/accommodation](http://ncl.ac.uk/accommodation)



# How to apply: undergraduate

To apply for accommodation, you need to hold a firm offer to study at Newcastle University.

## Accommodation Guarantee

As part of our Accommodation Guarantee, we guarantee accommodation to all first-year undergraduate students who meet the following criteria:

- you are a new student starting your first year of an undergraduate course
- you have applied as a single student (not as a couple or family)
- you have made Newcastle University your 'firm' choice and applied for a full year's accommodation by noon 24 July 2026
- you hold an unconditional firm offer by 17 August 2026

While we guarantee a room for students who meet this criteria, please note that we can't promise you'll get your favourite accommodation. Remember, it's the people you live with that make your experience memorable!

## Booking system

All full-year undergraduate applicants will use the Advanced Booking method through our Accommodation Portal. This allows you to reserve a room at the point of applying and see what's available in real time – giving you peace of mind that your accommodation is secured.

You can choose your accommodation and wash type depending on its availability. However, you won't be able to pick a specific room or flat, nor can you organise to live with friends.

## How does the process work?

The Accommodation Portal will remain open from its launch date, and we encourage all applicants to reserve their room by the guarantee date of 24 July 2026.

It's important you research all our accommodation in advance of applying. If your first choice is unavailable, please be open to considering a different one - bearing in mind that what's available at the time may not be later on.

Once you've reserved your room, you won't be able to make any changes to it - even if a room you prefer is released later. So please consider your choice fully before making a reservation. You won't sign a contract until August, after A-Level results are announced and your place at Newcastle is confirmed.

To meet the guarantee, we may need to open a guaranteed waiting list. If this happens, we'll let you know. You are still guaranteed a room but will need to submit preferences instead.

## Disability or health need

If you require adaptations to your bedroom due to a disability or health need, you'll use the application route instead of the Advanced Booking option. This means that your allocation will be considered by our experienced team who will work with you to ensure a suitable room is found and your individual needs are met.

If you have a disability or health need but do not require adapted accommodation, please use Advanced Booking and let us know about any adjustments you need after you have reserved your room, and we'll work with you to organise these.



## Guaranteed accommodation in your first year

(Eligibility criteria apply)

Find out more





# How to apply: postgraduate

If you're applying as a full-year postgraduate student, a part-year student, or as a couple or family, information about how to apply is detailed below.

## Accommodation Guarantee

We guarantee a room to all full-year, postgraduate taught students who meet the following eligibility criteria:

- apply by 30 June 2026
- have an academic status of 'unconditional firm' by 30 June 2026
- are studying a taught programme
- are coming alone (not with a partner or children)
- are studying and have applied for accommodation for the full academic year

While we guarantee a room for students who meet this criteria, please note that we can't guarantee you'll get your favourite accommodation – after all, it's the people you live with that will make your experience.

## Application system

Postgraduate students will apply for accommodation by choosing their top accommodation choices. Each application will be assigned a randomly generated number, which is used to determine the order of allocation.

We then look at your accommodation choices and try to match these with vacant rooms. If there are no vacancies in your chosen accommodation, we will offer you an alternative room using the 'alternative preferences' you've indicated in your application.

Offers of accommodation will be made to guaranteed students from July 2026 onwards.

## Part-year students

Part-year students aren't guaranteed accommodation, but we still recommend that you apply and we'll try to offer you a room if possible. The way to apply will depend on your exchange programme, so we recommend you check our webpages for specific information. [ncl.ac.uk/accommodation/applying-for-accommodation/part-year-student-accommodation](https://ncl.ac.uk/accommodation/applying-for-accommodation/part-year-student-accommodation)

## Couples and families

Couples and families aren't guaranteed accommodation, but we still recommend that you apply and we'll try to offer you accommodation.

You can apply using the application method in the Accommodation Portal, where you'll pick one accommodation option. For couples, this is a two-bedroom flat, and families can choose either a two or three-bedroom flat depending on the size of your family.

We'll ask for information about the other members of your household, as well as your arrival and departure dates.

We aim to process applications as soon as possible after receiving them, so we recommend applying as soon as the application is open and you're a firm offer holder - although we can't process your application until you obtain your unconditional offer. Only one member of the household needs to apply.





# Accommodation at a glance

Undergraduate accommodation									
	Room type	Weekly rent	No. of rooms	Length of contract in weeks	Average sharing bathroom	Average sharing kitchen	Walking distance to Students' Union	Washer/dryer in flats	Laundry credit*
<b>Bernicia</b>	En suite	£190.05	95	40	En suite	6:1	1 min	-	-
<b>Byron Central</b>	En suite	£175.13	183	40	En suite	4:1	14 mins	-	-
	Premium en suite	£182.84	104						
<b>Kensington Terrace</b>	En suite	£197.40	44	40	En suite	11:1	5 mins	-	£100 credit
	Premium en suite	£221.55	55						
	Studio	£242.55	15						
<b>Manor Bank</b>	En suite	£156.78	497	40	En suite	4:1	17 mins	-	-
<b>Marris House</b>	Washbasin	£158.20	186	40	6:2	6:1	14 mins	✓	-
<b>Newgate Court</b>	En suite	£205.25	429	40	En suite	9:1	15 mins	-	-
<b>Park Terrace</b>	En suite	£197.40	234	40	En suite	8:1	6 mins	-	£100 credit
	Premium en suite	£221.55	9						
<b>Park View</b>	En suite	£197.40	1254	40	En suite	8:1	14 mins	-	£100 credit
	Studio	£242.55	16						
<b>The View</b>	En suite	£197.00	312	40	En suite	5:1	13 mins	-	-
	Premium en suite	£200.00	17						
<b>Turner Court</b>	En suite	£185.00	273	40	En suite	5:1	19 mins	-	20/20
<b>Verde</b>	En suite	£199.00	413	40	En suite	6:1	13 mins	-	-
	Premium en suite	£205.00	18						
<b>Wellington St Plaza</b>	En suite	£178.65	614	40	En suite	6:1	14 mins	-	-
	Premium en suite	£190.78	90						
	Premium en suite 2	£202.91	43						
<b>Windsor Terrace</b>	Washbasin	£142.80	186	40	6:2	6:1	6 mins	-	£100 credit
	En suite	£181.65	48						

Postgraduate accommodation											
	Room type	Weekly rent	No. of rooms	Length of contract in weeks	Average sharing bathroom	Average sharing kitchen	Walking distance to Students' Union	Washer/dryer in flats	Laundry credit*		
<b>Bernicia</b>	Studio	£231.00	14	49	En suite	own kitchen	1 min	-	-		
<b>Bowsden Court</b>	Standard	£117.60	52	49	En suite	2:1	2:1	2 miles / 7 min metro	✓		
	En suite	£173.60	136							5:1	£100 credit
	2-bed family flat	£224.00	16							46	Family only
	3-bed family flat	£239.75	11					✓	-		
<b>Grand Hotel</b>	En suite	£197.40	58	49	En suite	8:1	2 mins	-	£100 credit		
	Premium en suite	£221.55	8								

## Key

- Room type
- Weekly rent
- No. of rooms
- Length of contract in weeks
- Average sharing bathroom
- Average sharing kitchen
- Walking distance to Students' Union
- Washer/dryer in flats
- Laundry credit\*

\* **20/20** – 20 wash and 20 dry cycles included in the cost of rent during the 40 week contract.  
**£100 credit** – University-owned accommodation provides laundry credit of £100 split into two £50 payments for full-year contracts except Marris House and Bowsden Court couple/family/standard.

**£30 food voucher** - University-owned accommodation provides a £30 food voucher which can be used at University catering outlets. This is for full-year contracts except Bowsden Court couple/family.

Please note that while we strive to provide accurate and up-to-date information, individual room sizes may vary, and some sharing ratios are based on our best estimates and may be subject to change.

## Find out more

[ncl.ac.uk/accommodation](https://ncl.ac.uk/accommodation)

## See our accommodation

[ncl.ac.uk/accommodation](https://ncl.ac.uk/accommodation)

## Contact us

[ncl.ac.uk/accommodation/contact-us](https://ncl.ac.uk/accommodation/contact-us)

## Our policies, terms and conditions

[ncl.ac.uk/accommodationpolicies](https://ncl.ac.uk/accommodationpolicies)



This publication is intended as advance publicity for information and guidance purposes only. Details included are correct at the time of going to press in February 2026.

The most up-to-date and detailed source of information at any time is the accommodation website:

**[ncl.ac.uk/accommodation](https://ncl.ac.uk/accommodation)**

Photography by: C Bishop; J Donoghue; A Remlein

Designed by AlphaGraphics. Printed by Statex.

©Newcastle University, 2026.

The University of Newcastle upon Tyne trading as Newcastle University.