

Accommodation Guide



2023–24

For the most up-to-date information about our accommodation – and how to get in touch with us – go to ncl.ac.uk/nclaccommodation

Welcome

Newcastle is a great city for student life. Vibrant, multicultural, and easy to get around, it's ranked in the top 10 student cities in the UK by QS Best Student Cities 2023.

And we want you to find your perfect home here.

Living in Newcastle you'll be surrounded by world-class art, music and sport, great shopping and a food scene that's influenced by cultures from around the world.

You'll feel like you belong – one in six people is a student here – while fast road and rail links, plus direct flights to UK and world destinations, will mean home is never far away.

Living with us, you'll make memories and friends for life and be supported by our University community to have the best possible experience, especially if this is your first time living away from home.

In this Guide we've explored the different types of accommodation available to you and – because all our residences have their own character and style – we've included highlights from each of them.

There's a handy map showing how close all our accommodation is to our beautiful campus and city-centre facilities, as well as a breakdown of our accommodation prices.

There's also a step-by-step guide on how to apply and, when you're ready to find out more, you can get the most up-to-date and detailed information about our accommodation at ncl.ac.uk/nclaccommodation

Ready to discover what it will be like to live with us?

Top 10
city for affordability
in the UK*

* QS Best Student Cities 2023

Why live with us?



There's lots of reasons why you'll have a fantastic experience living with us. Here's just a few of them.

New Student Guarantee

We've taken the stress out of finding somewhere to live at University – **we guarantee accommodation to all first-year undergraduate and postgraduate taught students** (eligibility criteria apply).

Find out more about our New Student Guarantee at ncl.ac.uk/nclguarantee

Different comes as standard

We all like different things and we cater for that, with over 5,000 rooms in vibrant student villages, Victorian terraces, modern city-centre apartments and well-equipped flats.

The right price...

Our accommodation comes in all shapes and sizes to suit a variety of budgets and **our city is ranked 9th in the UK for affordability (QS Best Student Cities 2023).**

...and the right location

Whether your accommodation is in the heart of our vibrant city centre, in the artsy Ouseburn area, near parks and outdoor spaces, or close to restaurants and shops, great public transport links mean you're never far from University facilities.

Hassle-free living

- Utility bills included in the price of your rent (some exclusions apply).
- FREE WiFi.
- FREE personal possessions insurance.
- Flexible payment options.

Feel safe with us

Your safety is our priority – our campus Security team is on call 24/7, and our free SafeZone app connects you directly to them. Most of our residences provide on-site support during office hours and have extra safety measures in place, too. Find out more on pages 8–9.

We'll be there for you

Our support ranges from help to settle in with us and live independently, to health and wellbeing support, visa and student finance advice. Find out more on pages 8–9.

Go greener

Newcastle University is ranked **1st in the UK and 8th in the world for our commitment to sustainable development in the Times Higher Education Impact Rankings 2022.** Be part of our work to create a greener, cleaner campus through sustainable and recycling initiatives at our accommodation.

We follow The Code

We've signed up to The Student Accommodation Code, which protects your rights to safe, good-quality accommodation. For more information see thesac.org.uk

Your new home



Where will you decide to call home? We think you'll be spoilt for choice...

We offer:

- **University-owned accommodation:** owned and managed by Newcastle University and staffed by our dedicated teams. Our accommodation is centred around three vibrant student villages – Park View, Kensington/Park and Castle Leazes.
- **Managed partnership accommodation:** owned by private providers, but run in partnership with us. The private provider will manage your tenancy, but we'll sort out your application and allocation.

Private accommodation – owned and managed by private landlords – is available in the city but doesn't feature in this Guide.

Catered or self-catered?

Most of our residences are self-catered, but we do offer:

- **catered accommodation at Castle Leazes:** save time with great quality, fresh and nutritious meals – you can start your day with breakfast in your accommodation, or at one of our cafés on campus. Breakfasts include continental, cooked, or 'grab and go' options, while three-course evening meals served at Castle Leazes offer plenty of choice for meat-based, vegetarian, vegan and Halal diets (available Monday to Friday).
- **student meal packages:** combine a meal package with your accommodation choice and enjoy the flexibility of eating at our cafés on campus (available Monday to Friday).

If you're living in Castle Leazes from September 2023, you'll have the option to opt-in to our residential catering package.

The opt-in package will be available to purchase once you've received your offer of accommodation.

More information can be found at ncl.ac.uk/catering/residential-catering

Your room

The majority of our residences offer shared accommodation – that means you'll have your own bedroom, but share the communal living areas with other students.

- Standard rooms share washbasin, shower and toilet facilities.
- Washbasin rooms have private washbasins, but shared toilet and shower facilities.
- Rooms with en suite facilities feature a private pod bathroom with shower, washbasin and toilet.

All bedrooms include a bed, desk, chair, drawer unit, wardrobe and shelving.

For students with additional accommodation requirements due to a medical need or disability, we have a range of accessible accommodation. Contact us at allocations-enquiries@ncl.ac.uk to discuss your needs.

We also have a limited number of self-contained studios, as well as dedicated accommodation for couples and/or families.

Your facilities

Contemporary kitchens, laundry facilities*, chill-out areas and bike storage come as standard at most of our residences, with most also featuring TVs (licences included where sets are provided in communal areas**).

Some residences also feature study zones, games areas, communal spaces and other great facilities. For a full list of what you can expect, check our residence profiles. ncl.ac.uk/nclouraccommodation

What will I need to bring with me?

Our residences really are well equipped, so don't be tempted to over pack when it's time to move in!

Instead, read our handy guide to the items our students found most useful to bring to university.

ncl.ac.uk/accommodationarrivals

And if you're joining us from overseas, don't worry – in University-owned and most managed partnership accommodation, you'll be supplied with the basics you need on your arrival, including bedding, crockery and cutlery, so you can settle in straight away.

Take a virtual tour NOW!

Simply choose one of our residences and select the 'Virtual tour' section on each residence's page.
ncl.ac.uk/nclouraccommodation

* Laundry use is chargeable as an additional fee.

** If you bring your own TV or watch using a personal electronic device, you'll need your own licence.

How we'll support you



We want you to feel safe and supported living with us. That's why we have great teams who will help you settle in.

In University-owned accommodation, our Customer Services team provides on-site support during office hours, advising on any issues you might have. CCTV, entry phone systems and Help Points also keep our residences safe and secure.

Our Security team is on duty across campus at all times, and the free SafeZone app allows students to get help quickly through 'tap' alerts to first aiders, security, and support teams.

Behind the scenes our Residences team makes sure everything is running smoothly. And if you've got a tenancy query or financial question, our Allocations and Finance team can talk through any questions or concerns you have.

Newcastle University's Student Wellbeing teams also offer a range of services, including:

- counselling – from one-to-one sessions and workshops to self-help programmes
- disability support, including long-term health and mental health support – to access the resources and support you need
- financial support – from managing your money to help with student finance issues
- visa support – advice on your visa or immigration status

You can also access online support 24/7 through the TalkCampus mental health support network, and our iNCLude app, developed to help you create positive habits and great coping skills.

ncl.ac.uk/wellbeing/talkcampus-247support

Our Support and Advice Hub and Welfare and Support Centre based in the Students' Union offer professional advice. And there's extra support available through the confidential listening service Nightline.

nusu.co.uk/support

5th
in the UK
for Student Life*

* Whatuni Student Choice Awards 2022

Live your best ResLife

Learn life skills, make new friends and have the best time in your first year at University with our ResLife programme.

ResLife builds a sense of belonging through:

- fun social events
- practical 'life hacks' workshops, vlogs and podcasts to help you live independently
- **ResLife Connect** – an informal support network
- **ResLife Action** – a programme of swap shops, upcycling events and more to reduce our environmental impact

ncl.ac.uk/nclreslife



Our ResLife team organises different activities such as bingo nights, movie nights, quiz games, art/crafts and festive events – my experience couldn't be more awesome. Coming to Newcastle to study and staying in University accommodation is one of the best choices I've made.

Penny



ResLife certainly made my first year at Newcastle University brighter – it was a great way to get to know people. Now, I'm lucky enough to be a ResLife assistant and I love my job! I know that the service we are offering can make someone's day a little better.

Katie



ResLife has been there for me since the very start. Living in a new city abroad, which doesn't share much of your culture, can be very intimidating. ResLife has helped me ease into, not only University, but this city and country, as well. I think it's the best thing about University accommodation.

Anam

Undergraduate accommodation

Start your search with this guide to our University-owned and managed partnership accommodation. Further details of our undergraduate accommodation – including virtual tours of our residences – can be found at ncl.ac.uk/nclaccommodation

You can also tour some of our accommodation in person during our Open Days and on-campus events. ncl.ac.uk/study/meet



From £98.00
per week

Castle Leazes NE2 4NY

Plan for an unforgettable experience at this bright and lively student community, just a stone's throw from the beautiful Leazes Park.



From £129.92
per week

Marris House NE2 4BE

Sociable halls refurbished in 2019 with stylish bedrooms, kitchens, and new social and study zones.



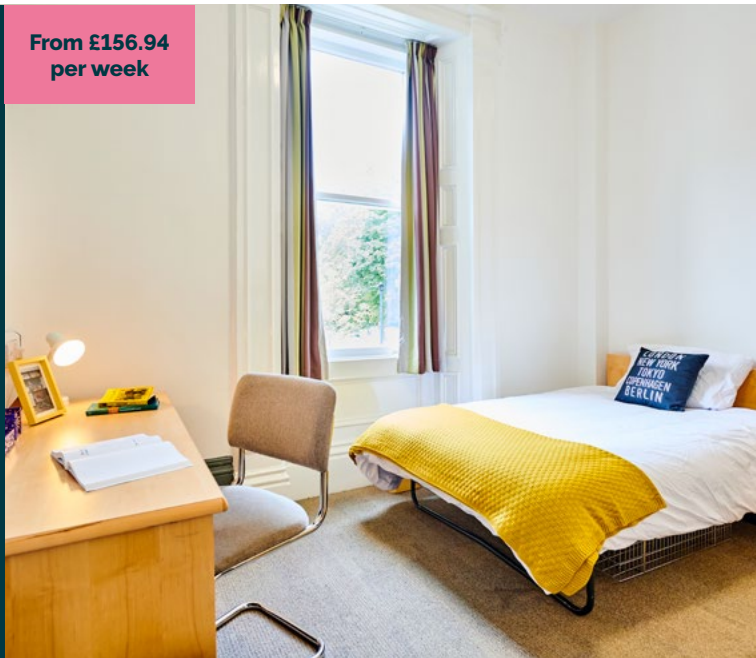
Kensington Terrace

NE2 4BF

These modern, stunning Victorian terraces are in a prime location overlooking Exhibition Park.

Please note there will be a rolling programme of kitchen refurbishments throughout 2023–24.

From £156.94
per week



Park Terrace

NE2 4BB

Contemporary flats conveniently located close to the city centre: the perfect balance between comfort and practicality.

Please note there will be a rolling programme of kitchen refurbishments throughout 2023–24.



From £156.94
per week



Undergraduate accommodation

Park View

NE2 4BS

Ultra-modern and spacious flats with a gaming area, study spaces, and open-plan common room.



From £164.50
per week



Wellington St Plaza

NE4 5SA

Located next to Newcastle Helix, close to the Business School, this residence offers modern self-catered en suite rooms in flats shared by five or six students.



From £151.00
per week



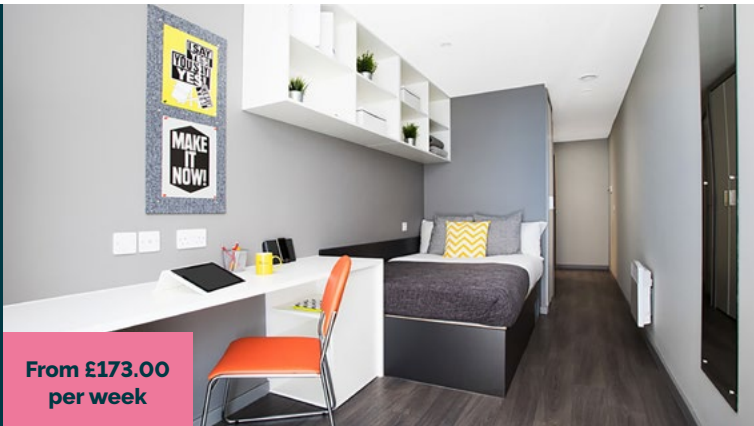
Newgate Court

NE1 5AT

Newgate Court is located in the heart of the city centre and offers modern, self-catered en suite rooms in 4-10 bedroom flats.



From £173.00
per week



University
owned



Managed
partnership



En suite



Washbasin



Studio



Self-
catered



Catered

Portland Green

NE2 1DT

Located in the vibrant, arty, and student-friendly Ouseburn area of Newcastle, Portland Green offers self-catered en suite accommodation complete with an on-site gym and a fantastic common area to socialise in.



From £140.80
per week



Windsor Terrace

NE2 4HE

Simply roll out of bed to the Philip Robinson Library or city centre from flats in a convenient location.



From £122.50
per week



Postgraduate accommodation

Start your search with this guide to our University-owned accommodation. Further details of our postgraduate accommodation – including virtual tours of our residences – can be found at ncl.ac.uk/nclouraccommodation



From £107.94
per week

Bowsden Court NE3 1RR

Located in the vibrant suburb of South Gosforth next to a Metro station and surrounded by handy shops and places to eat, this welcoming community is ideal for postgraduates.



Carlton Lodge NE2 4EU

Conveniently located close to the Philip Robinson Library, this converted Victorian terrace has 11 postgraduate rooms available for students who prefer a smaller living environment.



From £185.50
per week



From £156.94
per week

Grand Hotel NE1 7RE

Ever dreamed of living above a coffee shop? This convenient en suite residence is perfectly placed for city life.



Jesmond Road NE2 4EU

Beautiful converted Victorian terraces, located beside the Philip Robinson Library and next door to Carlton Lodge.



From £98.00
per week



Map

Key

- Park View Student Village
- Kensington/Park Student Village
- Castle Leazes Student Village
- Managed partnership accommodation
- 10 mins' walk from Students' Union
- 20 mins' walk from Students' Union
- Main University campus
- City centre
- Parks and open spaces
- Newcastle Helix*
- M Metro
- H Hospital (Royal Victoria Infirmary)

* Innovation hub for science, technology, research and education



Accommodation fees 2023–24

University accommodation fees include heating, electricity and water charges*, and we provide free personal possessions insurance and WiFi. Full guidelines on payment options will be detailed in your contract.

Undergraduate accommodation – Catered

Room type	Residence	Weekly rent	Total rent	Length of contract
Washbasin	Castle Leazes	£147.98	£5,273.38	38 weeks

Undergraduate accommodation – Self-catered

Room type	Residence	Weekly rent	Total rent	Length of contract
Washbasin	Castle Leazes	£98.00	£3,724.00	38 weeks
	Windsor Terrace	£122.50	£4,900.00	40 weeks
	Marris House	£129.92	£5,196.80	40 weeks
En suite	Portland Green	£140.80	£5,632.00	40 weeks
	Castle Leazes	£151.90	£5,772.20	38 weeks
	Wellington St Plaza	£151.00	£6,040.00	40 weeks
	Windsor Terrace	£151.90	£6,076.00	40 weeks
	Kensington Terrace	£156.94	£6,277.60	40 weeks
	Park Terrace	£156.94	£6,277.60	40 weeks
	Park View	£164.50	£6,580.00	40 weeks
	Newgate Court	£173.00	£6,920.00	40 weeks
Large en suite	Portland Green	£148.50	£5,940.00	40 weeks
Premium en suite	Portland Green	£151.80	£6,072.00	40 weeks
	Wellington St Plaza	£161.00	£6,440.00	40 weeks
	Kensington Terrace	£185.50	£7,420.00	40 weeks
	Park Terrace	£185.50	£7,420.00	40 weeks
Premium en suite with bath	Wellington St Plaza	£171.00	£6,840.00	40 weeks
Studio	Kensington Terrace	£199.50	£7,980.00	40 weeks
	Park View	£199.50	£7,980.00	40 weeks

Postgraduate accommodation – Self-catered

Room type	Residence	Weekly rent	Total rent	Length of contract
Standard	Jesmond Road	£98.00	£4,802.00	49 weeks
	Bowsden Court	£107.94	£5,289.06	49 weeks
Washbasin	Jesmond Road	£105.00	£5,145.00	49 weeks
En suite	Bowsden Court	£134.96	£5,518.40	40 weeks
	Bowsden Court (refurbished)	£140.00	£6,860.00	49 weeks
	Grand Hotel	£156.94	£7,690.06	49 weeks
Premium en suite	Carlton Lodge	£185.50	£9,089.50	49 weeks
	Grand Hotel	£185.50	£9,089.50	49 weeks

Family accommodation – Self-catered

Room type	Residence	Weekly rent	Total rent	Length of contract
Two-bedroom flat*	Bowsden Court	£175.00	£7,000.00	40 weeks
Three-bedroom flat*	Bowsden Court	£187.25	£7,490.00	40 weeks

* Rents in family accommodation exclude heating, electricity and water charges.

Couple accommodation – Self-catered

Room type	Residence	Weekly rent	Total rent	Length of contract
Two-bedroom flat*	Bowsden Court	£175.00	£7,000.00	40 weeks
Studio (UG)	Kensington Terrace	£210.00	£8,400.00	40 weeks
Studio (PG)	Kensington Terrace	£210.00	£10,290.00	49 weeks

* Rents in Bowsden Court couple accommodation exclude heating, electricity and water charges.

Fees listed are for the academic year of entry 2023–24. Always check online for the most up-to-date information.
ncl.ac.uk/nclaccommodation

How to apply



Step 1.

Once you've received an offer to study with us, we'll email you details of how to use our online Application Portal.

Register by supplying some brief details, including your email address, and create a password.

If you're an undergraduate student you don't need to make Newcastle University your 'firm' UCAS choice before applying for accommodation with us.

Step 2.

Log in using your password and applicant number.

Select 'Create Application' and you're ready to begin.

Book now

We're aiming to give early unconditional firm offer holders the chance to book their accommodation as soon as our Application Portal opens.

For further information, keep checking ncl.ac.uk/nclaccommodation

Step 3.

Select your 'Application Type' (single, couple or family) and list your favourite residences. If you're a single student you can choose three options.

Mature undergraduate students aged 25+ can choose from both undergraduate and postgraduate accommodation.

If you need a specific type of room because of a disability or medical reason, include this in your application.

Step 4.

Select 'Confirm' when you're happy with your application; we'll email you to let you know we've received it.

You can log back in to review your application, **but to qualify for our New Student Guarantee (see page 5), you must apply for your accommodation by the stated deadline.**

How we allocate rooms

We don't allocate rooms on a first-come, first-served basis. We work hard to offer you a place in your preferred accommodation, although we can't guarantee this.

Accepting your offer

If you're offered University-owned accommodation you'll get an email asking you to view and accept the offer through our online portal.

If you're offered managed partnership accommodation, you'll get an email directing you to the company's online system to register and accept the offer.

You'll need to accept your offer by the expiry date.

Your contract with us

Your contract will vary depending on your accommodation.

- **University contracts:** no deposit required and you won't need a UK-based guarantor. Our undergraduate contracts usually run for 40 weeks – although you might be able to extend your contract over the summer. In contrast, postgraduate contracts are 49 weeks long.

- **Managed partnership contracts:** our managed partnership contracts are also 40 weeks long. For some managed partnership accommodation, you may be asked to provide a UK guarantor and an advance rent payment. If you can't do this, you may have to pay your full rent before you arrive.

Some facilities may incur additional charges on top of your rent. The shared laundries offer communal washing machine/dryers but are charged per wash and dry. Families and couples in Bowsden Court should also note that utility fees are in addition to the rent paid and are based on actual usage. Currently, due to the UK-wide energy price increases, the unit prices are higher than usual and you should factor this additional cost into your budgeting.

Wherever you live, your contract will cover the full academic year, including holidays, so you won't have to move out at Christmas or Easter.

So what are you waiting for? Take a look at our accommodation now, and start to picture yourself living with us.
ncl.ac.uk/nclaccommodation








We can't wait to welcome you to your new home.

**Guaranteed
accommodation**
in your first year*

Accommodation at a glance

Key

-  **Room type***
-  **Average sharing kitchen****
-  **Weekly rent**
-  **Walking distance to Students' Union**
-  **No. of rooms****
-  **(C) Catered room**
-  **Length of contract**
-  **1xp Studio for one person**
-  **Average sharing bathroom****
-  **2xp Studio for two people**

Postgraduate accommodation							
Bowsden Court	Standard	£107.94	36	40/49 weeks	2:1	2:1	2 miles/ 7 minute Metro
	Single en suite	£134.96	70		En suite	5:1	
	Single en suite (refurbished)	£140.00	66		En suite	5:1	
	2-bed family flat	£175.00	18	40 weeks	Family only	Family only	
	3-bed family flat	£187.25	14		Family only	Family only	
Carlton Lodge	Premium single en suite	£185.50	11	49 weeks	En suite	6:1	6 mins
Grand Hotel	Single en suite	£156.94	56	49 weeks	En suite	8:1	2 mins
	Premium single en suite	£185.50	10				
Jesmond Road	Single standard	£98.00	23	49 weeks	5:1	5:1	6 mins
	Single washbasin	£105.00	54				
Kensington Terrace	Studio (2xp)	£210.00	2	49 weeks	En suite	Own kitchen	5 mins

Undergraduate accommodation							
Castle Leazes	Single washbasin	£98.00	167	38 weeks	5:1	13:1	18 mins
	Single washbasin (C)	£147.98	491		5:1	11:1	
	Single en suite	£151.90	301		En suite	10:1	
Kensington Terrace	Single en suite	£156.94	38	40 weeks	En suite	10:1	5 mins
	Premium single en suite	£185.50	60			Own kitchen	
	Studio (1xp)	£199.50	13				
	Studio (2xp)	£210.00	2				
Marris House	Single washbasin	£129.92	192	40 weeks	6:2	6:1	12 mins
Newgate Court	Single en suite	£173.00	200	40 weeks	En suite	7:1	12 mins
Park Terrace	Single en suite	£156.94	226	40 weeks	En suite	8:1	6 mins
	Premium single en suite	£185.50	17				
Park View	Single en suite	£164.50	1261	40 weeks	En suite	8:1	11 mins
	Studio (1xp)	£199.50	16			Own kitchen	
Portland Green	Single en suite	£140.80	943	40 weeks	En suite	6:1	19 mins
	Large single en suite	£148.50	18				
Wellington St Plaza	Premium single en suite	£151.80	14	40 weeks	En suite	6:1	13 mins
	Single en suite	£151.00	449				
	Premium single en suite w/bath	£171.00	23				
Windsor Terrace	Single washbasin	£122.50	186	40 weeks	6:2	6:1	7 mins
	Single en suite	£151.90	48		En suite	6:1	

* Individual room sizes may vary.

**This is an estimate, exact figures are subject to change.

Find out more

ncl.ac.uk/nclaccommodation

See our accommodation

ncl.ac.uk/nclouraccommodation

Contact us

ncl.ac.uk/nclaccommodationcontact

Our policies, terms and conditions

ncl.ac.uk/accommodationpolicies



This publication is intended as advance publicity for information and guidance purposes only. Details included are correct at the time of going to press in January 2023.

The most up-to-date and detailed source of information at any time is the accommodation website:

ncl.ac.uk/nclaccommodation

Photography by: C Bishop; J Donoghue; G Peacock; A Remlein.
Designed by: Altogether.