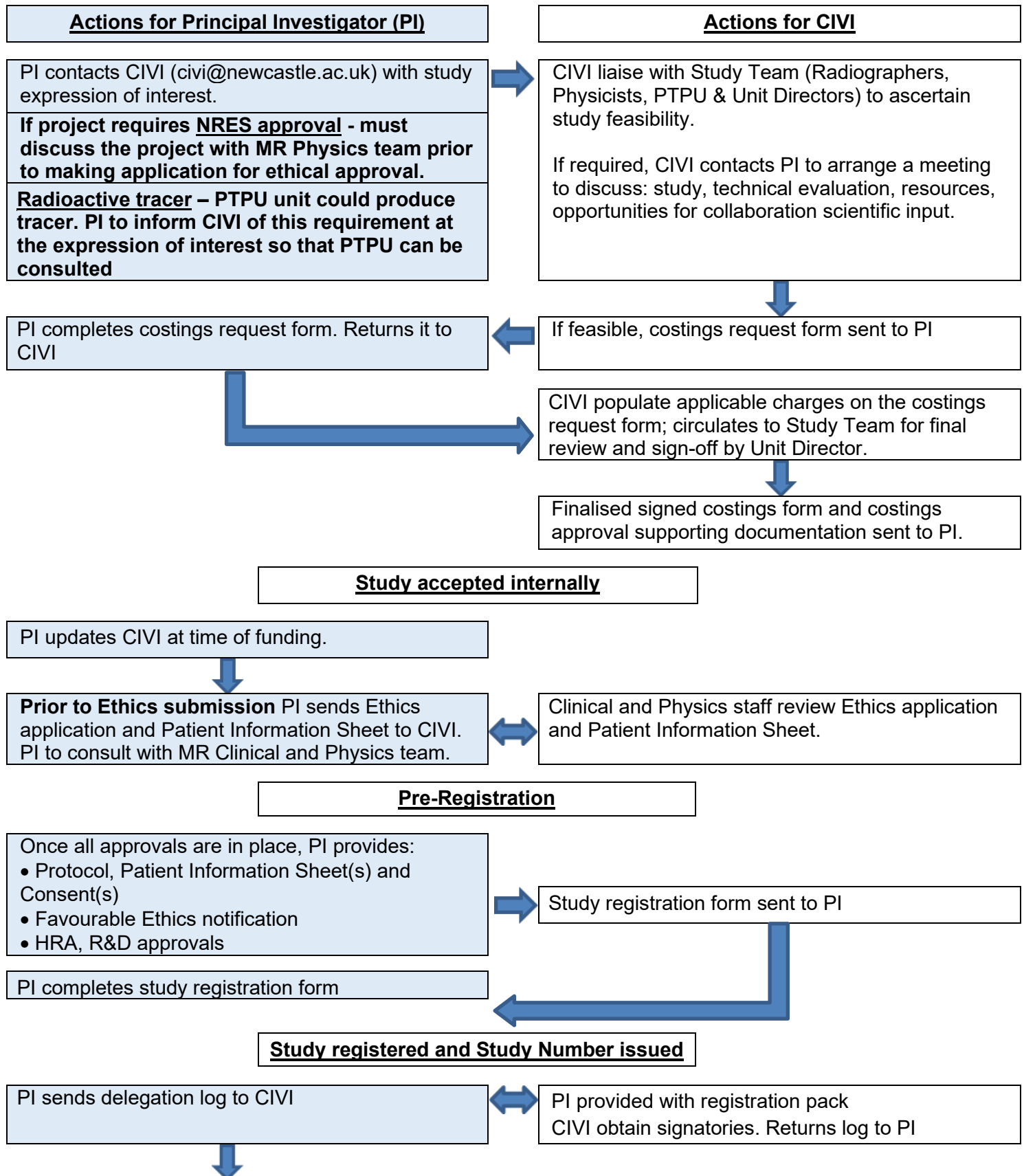


## STEPS IN LAUNCHING A STUDY



*working together as Newcastle Academic Health Partners*

## STEPS IN LAUNCHING A STUDY

---

PI contacts Radiographers to book scans



PI and/or study staff attend for tour, magnet safety briefing and/or clinical safety briefing, if applicable

---

*working together as* Newcastle Academic Health Partners

---