

Friday 26 and Saturday 27 June 2026
9.00–4.00



UNDERGRADUATE OPEN DAY



Head to King's
Gate (map ref 1)
to collect your
welcome pack!

WELCOME TO OUR CAMPUS



 **DOWNLOAD OUR EVENT APP!** ↓

Access event schedules, interactive maps, and exclusive content. With real-time updates!



Welcome to Newcastle University's Open Day

It's a pleasure to have you with us as you explore what could become your academic home.

Today you'll get a real taste of university life. Our Open Days are a great way for you to explore our campus; meet our academics and join subject sessions; explore our accommodation; visit our subject stands, sports centre, libraries and student experience hub and discover our city centre.

I hope you get a real sense of the opportunities waiting for you here. We are committed to helping every student thrive, and I'm delighted you're considering joining our vibrant Newcastle community.

Enjoy your day with us.

Professor Ruth Valentine
Pro-Vice-Chancellor, Education



YOUR OPEN DAY AT A GLANCE



Gain an insight into student life

Through the flexible programme of sessions, talks, tours and other activities on offer today, we hope you gain an insight into what it's like to be part of our community of students from around the world.

Welcome and arrival

The day runs from 9.00–4.00 and although you are welcome to arrive at any time, we recommend arriving as close to the start time as possible to get the most out of the day.

Head to our **Welcome Desk in the King's Gate building (map ref 1)**, or our information trailer opposite the Students' Union (**map ref 5**) to collect your welcome pack and say hello!

Visit our **Student Experience Hub (map ref 4)** and meet our student life teams including accommodation, sport, student finance and many others. Come and chat to our friendly team if you have any questions about the day.

How to check-in

On the morning of the event we will send you a QR code, just come along to one of our information points or speak to a staff guide (look out for the dark blue Team Newcastle t-shirts) to check-in. Alternatively, you can check-in yourself via a text message you'll receive on the day.

Subject activities

Discover more about the courses you're interested in. Attend a choice of activities, including subject talks, where you can chat to our friendly teams and ask any questions you may have about your chosen subject on a one-to-one basis. **See pages 10-21.**

Discover more about student life

A range of Student life and applying to Newcastle sessions will run throughout the day. You can also speak to staff at our Student Experience Hub (**map ref 4**). **See pages 6-9.**

Campus tours

Go on a walking tour of our beautiful campus led by one of our current students. **See page 9.** Our campus is relatively compact, so it's also easy to explore on your own.

Check out our student accommodation

See where you could live – all residences open are within walking distance from the main part of our campus. **See pages 22-25.**

Visit our student facilities

Our Students' Union, Sports Centre, libraries, and Language Resource Centre will be open for you to look around and staff will be available to answer your questions. **See page 9.**

Discover Newcastle Helix

Explore Newcastle Helix, the landmark 24-acre hybrid city quarter in the centre of Newcastle. We have a number of sessions on this part of campus, which is a short walk away, or you can catch a shuttle bus from the information point outside the Student Experience Hub in the Hadrian Building (**map ref 4**). Please allow at least 15 minutes for the journey in case of traffic.

Getting around

Our campus is compact, so it won't take you long to get to the different activities. As well as using the University map to find the location of activities listed in this programme, there will be lots of signage and students on campus to help with directions.

Discover your future at our Open Day with the official app!

Whether you're exploring campus, visiting accommodation or planning which sessions you will attend, this app has everything you need to make the most of your visit. Access event schedules, interactive maps, and exclusive content all in one place. Get real-time updates, and tailor your experience with our planner.

Free wifi

To access free wifi on campus connect to **wifi Guest**, locate the box **Get online at Newcastle University** and click **Go**, scroll down to select **Create account** enter your details and the account will be created.

Where to eat

There are lots of places on campus where you can stop for a drink or a bite to eat and enjoy a well-earned rest. **See page 26.**



**DOWNLOAD OUR EVENTS
APP FOR DIRECTIONS
TO ALL ACTIVITIES** 

STUDENT EXPERIENCE HUB



**Hadrian Building,
Lindisfarne Room**
9.00–4.00

map ref 4

Visit our interactive Student Experience Hub to find out more about how we support our students and speak to staff on a one-to-one basis. If you have any questions about our Open Day head to our helpdesk and our friendly team will be able to assist.



Accommodation at Newcastle

Find out about the great-value range of student accommodation available at Newcastle, and how to apply.

Undergraduate admissions

Speak to staff from our Admissions team about how to apply and what happens with your application once you've applied.

Careers and placement years

Our Careers Service is one of the best, largest and most innovative in the UK. Find out about the support on offer, work placement opportunities, graduate job prospects and how we can support students with placement years.

Global Opportunities

Discover more about opportunities to study abroad as part of your course or during the summer.

PARTNERS – supported entry to Newcastle University

The PARTNERS Programme is our access programme and is open to eligible students across the UK. Applicants receive a PARTNERS offer which could be up to three grades lower than the standard offer and will take part in an academic summer school. PARTNERS also includes a programme of support which helps students to develop essential skills and prepare them for university.

Pathways to Newcastle

Thinking of applying to Engineering, Mathematics, Physics, Natural and Environmental Sciences, or Computing? Find out if you could receive an offer of up to two grades lower through our Pathways to Newcastle programme which is aiming to increase applications to these subject areas, both regionally and nationally, and contribute to supporting the national skills agenda and economic growth.

Language Resource Centre

Discover how you can learn a language as part of, or in addition to, your studies at our Language Resource Centre.



Team Newcastle – Sport

Discover the huge range of sports that you can get involved in at Newcastle, whatever your ability, and our range of sports scholarships to support talented students.

Student Financial Support Team

Information about tuition fees, student loans, scholarships, and the financial support and advice available at Newcastle.

Student Health and Wellbeing

Find out about the free, professional and confidential support you could receive as a student at Newcastle.



Students' Union

Speak to our Students' Union team and discover the range of societies and clubs that can enhance your Newcastle University experience.

We are improving the facilities in our Students' Union building, therefore part of it is currently closed for refurbishment. The Co-op and Luthers' Bar Wetherspoon are still open as usual.

University Catering

Find out about the range of catering options for students on campus.

University Estates Team

Speak to our Security team to find out how we keep our students safe and look after our campus.

University Wide Language Programme

Find out more about the free language classes open to all students, which are offered by our School of Modern Languages.

TEACHERS' AND CAREERS ADVISERS DROP-IN



**Armstrong Building,
Ground Floor
Rooms G.69/70**
9.00–4.00

map ref 22

Friday only

Teachers and school staff are welcome to join us throughout the day for complimentary refreshments.

You will also have the opportunity to:

- reclaim your school's travel expenses
- meet members of our Outreach team
- find out about opportunities to bring your students to bespoke follow-up events or book us in to visit your school/college
- learn about case studies and success stories from previous outreach events

9.00 Complimentary tea and coffee

12.00 Complimentary buffet lunch



BROWSE OUR COLLECTION OF RESOURCES THAT HELP TEACHERS SUPPORT STUDENTS TO PROGRESS TO HIGHER EDUCATION



STUDENT LIFE SESSIONS



Attend our Student life and applying to Newcastle sessions to learn about student finance, the application process and discover more about the many opportunities to expand your experience outside of your degree.

Session	Description	Location	Room	Times	Map ref
Alternative routes to Newcastle University	We aim to admit highly-motivated and enthusiastic students from all backgrounds. As part of our commitment to widening participation, we offer a number of programmes that allow eligible applicants to receive a lower contextual offer that is up to three grades lower than typical entry requirements. Join us to find out more about PARTNERS, Pathways to Newcastle and Contextual Admissions (UK residents only).	Herschel Building	Lecture Theatre 2	9.15–9.45 12.30–1.00 2.00–2.30	17
Student life	Join our interactive panel Q&A, where recent graduates from a range of subjects share real insights into student life. Use your phone to submit live questions and get honest advice on making the most of your time at Newcastle.	Herschel Building	Curtis Auditorium	9.15–9.45 2.45–3.15	17
Applying to Newcastle	An overview of the UCAS application process and student journey to university, including applications to places, how we make decisions and what we look for in personal statements and references.	Herschel Building	Curtis Auditorium	10.00–10.30 1.15–1.45	17
Sport and active wellbeing	Learn about our multimillion pound investment in sports facilities, the student-led sports clubs you can get involved in and opportunities to compete at a higher level.	Herschel Building	Lecture Theatre 2	10.00–10.30 1.15–1.45	17
Living in Newcastle	Our student accommodation and estates teams will explain how to apply for our accommodation, how places are allocated and how we keep our students safe on campus.	Herschel Building	Curtis Auditorium	10.45–11.15 2.00–2.30	17
Student Wellbeing	Hear from our Wellbeing team about the range of wellbeing support available from counselling and mental health services to tailored support for autism, ADHD, and specific learning difficulties. You'll also learn about school-based support and other resources designed to help students thrive.	Herschel Building	Lecture Theatre 2	10.45–11.15	17
Beyond your degree: Start Up at Newcastle	Where ideas become opportunities... Discover how Newcastle students turn ideas into businesses, build career-ready skills and gain real-world experience alongside their degree.	King's Gate	Level 1, Events Space	11.00–11.15 1.15–1.30	1
Global Opportunities	Find out about opportunities to study abroad as part of your degree or during the summer, and how the experience can enhance your future prospects.	Herschel Building	Lecture Theatre 2	11.30–12.00	17
Student finance	Find out about how to apply for student finance and what we are doing at Newcastle to support students with the rising cost of living.	Herschel Building	Curtis Auditorium	11.30–12.00	17

VISIT OUR STUDENT FACILITIES



Take a look around our outstanding facilities and learn more about the opportunities available for our students.

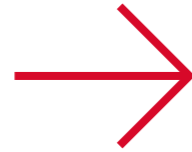
Session	Description	Location	Times	Map ref
Accommodation	Visit our accommodation throughout the day. See pages 22-25 for which residences are open.	Sites open throughout campus	Tours at residences run from 9.00 until 3.30	
Campus tours	Take a student-led walking tour of our beautiful campus. Tours last approximately 30-45 minutes.	Tickets and departures from the Student Forum	Tours run from 9.30 then every 30 minutes with the last tour departing at 3.00	10
Language Resource Centre	The award-winning Language Resource Centre provides language-learning materials in over 150 languages. See facilities and find out more about the opportunities available.	Language Resource Centre, Old Library Building	9.30–3.30	25/26
Libraries	Our Library Service holds the prestigious Customer Service Excellence award for the quality of its services. Take a look around our fantastic facilities. Staff and students will be in our libraries throughout the day to explain the libraries' services and wealth of resources, and to answer your queries.	Philip Robinson Library – main library Walton Library – Medical School	9.00–4.00 9.00–4.00	35 60
Sport	See our sport facilities, find out about the many student-led sports clubs you can get involved in and opportunities to receive sports scholarships.	Sports Centre	9.15–3.45	70



The whole atmosphere was great and the buildings and facilities looked wonderful and inviting. Out of all the universities we have visited so far this ticked every box for us and just felt right in every way.

Prospective student
Undergraduate Open Day, October 2025

FIND THE DEGREE FOR YOU



Discover all you need to know about the subjects you are interested in studying and meet staff and students from those areas.



Subject activity

Our subject activity is your opportunity to find out about your subjects of interest in greater depth. Use the table to find out what **talks**, **tours** and **interactive demonstrations** you can take part in.

Subject stands are conveniently located throughout our teaching buildings. It's a great opportunity for you to meet our friendly teams, ask questions and chat about your chosen subject in a relaxed, informal setting. You'll also get to speak to current students and find out valuable insights about life at Newcastle.

Our subject talks operate on a first-come basis, on the occasion that the talks are busy guests may be directed towards a live streaming area and asked to give students attending priority access.

Heading to Newcastle Helix for our Computer Science and Business School sessions...

If you're attending a session taking place at Newcastle Helix (Urban Sciences Building or The Frederick Douglass Centre) it is a **short 15-minute walk away**, or you can get a shuttle bus from the information point outside the Student Experience Hub (**map ref 4**). Please allow at least 15 minutes for the journey in case of traffic.

Subject	Activity	Building	Room	Time(s)	Map ref
Accounting and Finance (15 minutes walk from campus, shuttle bus available – see page 10)					
Accounting and Finance	Subject stand	The Frederick Douglass Centre	Ground Floor Foyer	9.00–3.00	106
		Armstrong Building	1st Floor	9.00–3.00	22
Accounting and Finance (including Flying Start with PwC)	Subject talk	The Frederick Douglass Centre	Ground Floor, Room G.56	10.00–10.40	106
			Ground Floor, Room G.41	1.00–1.40	
Finance	Subject talk	The Frederick Douglass Centre	Ground Floor, Room G.06	10.50–11.20 2.25–2.55	106
Agriculture and Animal Science					
Agriculture	Subject talk	Bedson Building	1st Floor, Room 1.75	1.30–2.20	20
		Boiler House	Meet by the subject stand	11.30–12.15	10
		Boiler House	Main event space	9.00–3.00	10
Animal Science	Subject talk	Bedson Building	Ground Floor, Room G.04	12.30–1.15	20
		Boiler House	Meet by the subject stand	1.15–2.00	10
		Boiler House	Main event space	9.00–3.00	10
Archaeology					
Archaeology	Subject talk	Armstrong Building	3rd Floor, Room 3.38	10.00–10.50 12.15–1.05	22
		Armstrong Building	1st Floor	9.00–3.00	22



DOWNLOAD OUR EVENTS APP FOR DIRECTIONS TO ALL ACTIVITIES ↓

Subject	Activity	Building	Room	Time(s)	Map ref
Architecture, Planning and Landscape					
Architecture, Planning and Landscape	Subject stand	The Henry Daysh Building	Ground Floor	9.00–3.00	32
Architecture	Subject talk	The Henry Daysh Building	Ground Floor, Room G.13	10.30–11.20 12.45–1.35	32
	Tour of facilities Tours depart every 30 minutes	Building Science	The Workshop	9.30–2.30	28
Architecture and Urban Planning	Subject talk	The Henry Daysh Building	Ground Floor, Room G.13	11.30–12.20	32
	Tour of facilities	The Henry Daysh Building	Follow on from subject talk	12.20–12.50	32
Urban Planning (including Geography and Planning)	Subject talk	The Henry Daysh Building	5th Floor, 5.08 Planning Studio	9.45–10.35 1.30–2.20	32
	Tour of facilities	The Henry Daysh Building	Follow on from subject talk	10.35–11.05 2.20–2.50	32
Biology					
Biology and Zoology	Subject talk	Bedson Building	Ground Floor, Room G.04	9.30–10.20 11.30–12.20	20
	Tour of facilities	Boiler House	Meet by the subject stand	1.15–2.00	10
	Subject stands	Boiler House	Main event space	9.00–3.00	10
Biomedical Sciences and Biochemistry					
Biomedical Sciences and Biochemistry	Subject talk	Medical School	1st Floor, David Shaw Lecture Theatre	10.00–10.45 1.00–1.45	60
	Tour of facilities	Medical School	Visit the subject stand and ask for a facilities tour	9.00–2.45	60
	Subject stand	Medical School	1st Floor, David Shaw Lecture Theatre	9.00–3.00	60

Subject	Activity	Building	Room	Time(s)	Map ref
Business Management (15 minutes walk from campus, shuttle bus available – see page 10)					
Business and International Business Management	Subject talk	The Frederick Douglass Centre	Ground Floor, Room G.41	10.20–10.50 12.15–12.45	106
	Subject stand	The Frederick Douglass Centre	Ground Floor, Room G.56	2.30–3.00	106
		Armstrong Building	1st Floor	9.00–3.00	
Chemistry					
Chemistry	Subject talk	Bedson Building	2nd Floor, Room 2.76	9.30–10.20 11.30–12.20 1.30–2.20 2.30–3.00	20
	Tour of facilities	Bedson Building	Follow on from subject session	10.20–10.50 12.20–12.50 2.20–2.50	20
	Subject stand	Boiler House	Main event space	9.00–3.00	10
Classics and Ancient History					
Classics and Ancient History	Subject talk	Armstrong Building	3rd Floor, Room 3.38	11.00–11.50 1.30–2.20	22
	Subject stand	Armstrong Building	1st Floor	9.00–3.00	22
Combined Honours*					
Combined Honours*	Subject talk	Armstrong Building	2nd Floor, Room 2.16	9.50–10.40 1.10–2.00	22
	Subject stand	Armstrong Building	1st Floor	9.00–3.00	22

*Combine two or three subjects from a choice of over 20 in humanities and social science disciplines. For further information visit ncl.ac.uk/school-x/study/combined-honours/subjects

Subject	Activity	Building	Room	Time(s)	Map ref
Computer Science (15 minutes walk from campus, shuttle bus available – see page 10)					
Computer Science	Subject talk	Urban Sciences Building	1st Floor, Lecture Theatre 1.006	10.00–11.00 12.30–1.30	105
	Taster lecture	Urban Sciences Building	1st Floor, Lecture Theatre 1.006	11.00–11.30 1.30–2.00	105
	Tour of facilities	Urban Sciences Building	Visit the subject stand and ask for a facilities tour	9.00–2.45	105
	Subject stand	Urban Sciences Building	Atrium	9.00–3.00	105
Data Science					
Data Science	Subject talk	Herschel Building	4th Floor, Teaching Room 4	9.30–10.00 11.30–12.00	17
	Interactive demonstration: Explore our online mathematics resources	Herschel Building	1st Floor, Herschel Learning Lab	11.00–11.30 1.00–1.30	17
	Subject stand	Herschel Building	Ground Floor Foyer	9.00–3.00	17
Dental Sciences (including Dental Surgery and Dental Therapy)					
Dental Sciences (including Dental Surgery and Dental Therapy)	Subject talk	Medical School	1st Floor, David Shaw Lecture Theatre	11.30–12.30	60
	Tour of facilities	Medical School	Sign-up for a tour at welcome stand in foyer	Friday: 1.00–1.45 Saturday: 10.00–2.30	60
	Subject stand	Medical School	Ridley Atrium	9.00–3.00	60
Economics (15 minutes walk from campus, shuttle bus available – see page 10)					
Economics	Subject talk	The Frederick Douglass Centre	Ground Floor, Room G.41	11.25–11.55	106
			Ground Floor, Room G.56	1.50–2.20	
	Subject stand	The Frederick Douglass Centre	Ground Floor Foyer	9.00–3.00	106
		Armstrong Building	1st Floor	9.00–3.00	22

Subject	Activity	Building	Room	Time(s)	Map ref
Environmental Science					
Environmental Science	Subject talk	Bedson Building	2nd Floor, Room 2.76	10.30–11.20 12.30–1.20	20
	Tour of facilities	Boiler House	Meet by the subject stand	1.30–2.15	10
	Subject stand	Boiler House	Main event space	9.00–3.00	10
Education					
Education	Subject talk	The Henry Daysh Building	Ground Floor, Room G.11	11.10–12.00	32
	Subject stand	Armstrong Building	1st Floor	9.00–3.00	22
Engineering					
All Engineering degrees	Subject stands	Stephenson Building	2nd Floor, Atrium	9.00–3.00	50
	Subject introductory talk	Stephenson Building	2nd Floor, Atrium	10.00–10.30 1.00–1.30	50
Aerospace Engineering	Subject talk	Stephenson Building	Ground Floor, Room G.034	10.45–11.15 1.45–2.15	50
	Tour of facilities	Stephenson Building	Follow on from subject talk	11.15–12.00 2.15–3.00	50
Chemical Engineering	Subject talk	Merz Court	3rd Floor, Room L301	10.45–11.15 1.45–2.15	24
	Tour of facilities	Merz Court	Follow on from subject talk	11.15–12.00 2.15–3.00	24
Civil Engineering	Subject talk	Cassie Building	2nd Floor, Room 2.32	10.45–11.15 1.45–2.15	49
	Tour of facilities	Cassie Building	Follow on from subject talk	11.15–12.00 2.15–3.00	49
Electrical and Electronic Engineering	Subject talk	Stephenson Building	2nd Floor, Room 2.024	10.45–11.15 1.45–2.15	50
	Tour of facilities	Stephenson Building	Follow on from subject talk	11.15–12.00 2.15–3.00	50

Subject	Activity	Building	Room	Time(s)	Map ref
Engineering (continued)					
Mechanical Engineering	Subject talk	Stephenson Building	Ground Floor, Room G.006	10.45–11.15 1.45–2.15	50
	Tour of facilities	Stephenson Building	Follow on from subject talk	11.15–12.00 2.15–3.00	50
Naval Architecture and Marine Engineering	Subject talk	Stephenson Building	1st Floor, Room 1.010	10.45–11.15 1.45–2.15	50
	Tour of facilities	Stephenson Building	Follow on from subject talk	11.15–12.00 2.15–3.00	50
English Language and Linguistics					
English Language and Linguistics	Subject talk	Percy Building	Ground Floor	11.30–12.20 1.30–2.20	23
	Subject stand 1: All degrees Including refreshments	Percy Building	Ground Floor	9.00–3.00	23
	Subject stand 2: English Language and Literature	Armstrong Building	1st Floor	9.00–3.00	22
English Literature (including with Creative Writing and History)					
English Literature (including with Creative Writing and History)	Subject stand 1: All degrees Including refreshments	Percy Building	Ground Floor	9.00–3.00	23
	Subject stand 2: English Literature and History	Armstrong Building	1st Floor	9.00–3.00	22
Creative writing	Subject talk	Percy Building	Ground Floor	10.30–11.20 12.30–1.20	23
English Literature	Subject talk	Percy Building	Ground Floor	10.30–11.20 12.30–1.20	23
English Literature and History	Subject talk	Percy Building	Ground Floor	10.30–11.20 1.30–2.20	23
Fine Art					
Fine Art	Subject talk	King Edward VII Building	2nd Floor, Fine Art Lecture Theatre	11.00–11.50 1.30–2.20	29/30
	Tour of facilities	King Edward VII Building	Follow on from subject talk	11.50–12.20 2.20–2.50	29/30
	Subject stand	Armstrong Building	1st Floor	9.00–3.00	22

Subject	Activity	Building	Room	Time(s)	Map ref
Food and Land Management					
Agri-business Management and Food Business Management and Marketing	Subject talk	Bedson Building	1st Floor, Room 1.75	11.30–12.20	20
	Subject stand	Boiler House	Main event space	9.00–3.00	10
Sustainable Land and Business Management	Subject talk	Bedson Building	Ground Floor, Room G.04	10.30–11.20	20
	Subject stand	Boiler House	Main event space	9.00–3.00	10
Geography					
Geography	Subject talk	The Henry Daysh Building	1st Floor, Room 1.02	9.45–10.35 12.15–1.05	32
	Subject stand	The Henry Daysh Building	1st Floor	9.00–3.00	32
History					
History	Subject talk	Armstrong Building	King's Hall	10.30–11.20 1.15–2.05	22
	Subject stand	Armstrong Building	1st Floor	9.00–3.00	22
Law					
Law	Subject talk	Newcastle Law School, Windsor Terrace	Ground Floor, Law Lecture Theatre	10.00–10.50 12.00–12.50 2.00–2.50	38
	Tour of facilities	Newcastle Law School, Windsor Terrace	Meet in Law School Reception	Drop-in 9.30–4.00	38
	Subject stand	Armstrong Building	1st Floor	9.00–3.00	22
Marketing (15 minutes walk from campus, shuttle bus available – see page 10)					
Marketing (including Marketing and Management)	Subject talk	The Frederick Douglass Centre	Ground Floor, Room G.56	11.10–11.40 1.05–1.35	106
	Subject stand	The Frederick Douglass Centre	Ground Floor Foyer	9.00–3.00	106
		Armstrong Building	1st Floor	9.00–3.00	22

Subject	Activity	Building	Room	Time(s)	Map ref
Mathematics and Statistics					
Mathematics and Statistics	Subject talk	Herschel Building	Ground Floor, Lecture Theatre 3	10.00–10.50 12.00–12.50 2.00–2.50	17
	Interactive demonstration: Explore our online mathematics resources	Herschel Building	1st Floor, Herschel Learning Lab	11.00–11.30 1.00–1.30	17
	Subject stand	Herschel Building	Ground Floor Foyer	9.00–3.00	17
Mathematics and Statistics with Foundation Year					
Mathematics and Statistics with Foundation Year	Subject talk	Herschel Building	4th Floor, Teaching Room 2	9.15–9.45	17
	Interactive demonstration: Explore our online mathematics resources	Herschel Building	1st Floor, Herschel Learning Lab	11.00–11.30 1.00–1.30	17
	Subject stand	Herschel Building	Ground Floor Foyer	9.00–3.00	17
Marine Biology and Marine Zoology					
Marine Biology and Marine Zoology	Subject talk	Bedson Building	1st Floor, Room 1.75	10.30–11.20 12.30–1.20	20
	Tour of facilities	Boiler House	Meet by the subject stand	1.45–2.30	10
	Subject stand	Boiler House	Main event space	9.00–3.00	10
Media, Journalism and Film					
Media, Journalism and Film	Subject stand	Armstrong Building	1st Floor	9.00–3.00	22
Film	Subject talk	King Edward VII Building	2nd Floor, Fine Art Lecture Theatre	9.45–10.25 12.30–1.10	29/30
	Tour of facilities	King Edward VII Building	Follow on from subject talk	10.25–11.00 1.10–1.45	29/30
Media	Subject talk	Armstrong Building	2nd Floor, Room 2.98	11.05–11.45	22
	Tour of facilities	Armstrong Building	Follow on from subject talk	11.45–12.20	22
Journalism	Subject talk	Armstrong Building	2nd Floor, Room 2.98	12.00–12.40	22
	Tour of facilities	Armstrong Building	Follow on from subject talk	12.40–1.15	22

Subject	Activity	Building	Room	Time(s)	Map ref
Medicine (including Accelerated Programme)					
Medicine (including Accelerated Programme)	Subject talk	Dental School	Ground Floor, RB Green Lecture Theatre	10.00–10.55 1.00–1.55	63
	Interactive demonstration: Clinical skills	Medical School	Sign-up for demo at welcome stand	9.15–2.45	60
	Interactive demonstration: Simulation drop-in session	Medical School	Visit welcome stand in foyer for information	9.15–2.45	60
	Subject stand	Medical School	Ridley Atrium	9.00–3.00	60
Modern Languages					
Modern Languages	Subject talk	Armstrong Building	2nd Floor, Room 2.98	10.00–10.50 1.00–1.50	22
	Taster lecture	Armstrong Building	Ground Floor, Room G.42	12.00–12.50	22
	Chat to staff and students from each language area	Old Library Building	Language Resource Centre	11.30–1.00 1.50–3.00	25/26
	Subject stand	Armstrong Building	1st Floor	9.00–3.00	22
Music					
Music	Subject talk	Armstrong Building	Ground Floor, Room G.42	11.00–11.50 1.00–1.50	22
	Tour of facilities	Armstrong Building	Follow on from subject talk	11.50–12.20 1.50–2.20	22
	Subject stand	Armstrong Building	1st Floor	9.00–3.00	22
Nutrition and Dietetics					
Nutrition and Dietetics	Subject talk	Dame Margaret Barbour Building	Ground Floor, Lecture Theatre G.01	12.00–12.45	110
	Tour of facilities	Dame Margaret Barbour Building	Meet at subject stand	12.45–1.30	110
	Subject stand	Dame Margaret Barbour Building	Ground Floor Foyer	9.00–3.00	110

Subject	Activity	Building	Room	Time(s)	Map ref
Pharmacy					
Pharmacy	Subject talk	Dental School	Ground Floor, Lecture Theatre C	10.00–10.45 12.00–12.45	63
	Subject stand	Medical School	Ridley Atrium	9.00–3.00	60
Philosophy					
Philosophy	Subject talk	The Henry Daysh Building	6th Floor, Room 6.16	11.00–11.50 1.30–2.20	32
	Subject stand	Armstrong Building	1st Floor	9.00–3.00	22
Physics					
Physics	Subject talk	Herschel Building	Ground Floor, Lecture Theatre 3	11.00–11.40 1.00–1.40	17
	Interactive demonstration	Herschel Building	Follow on from subject talk	11.40–12.10 1.40–2.10	17
	Subject stand	Herschel Building	Ground Floor Foyer	9.00–3.00	17
Physics with Foundation Year					
Physics with Foundation Year	Subject talk	Herschel Building	4th Floor, Teaching Room 2	9.15–9.45	17
	Interactive demonstration	Herschel Building	Meet at subject stand	11.40–12.10 1.40–2.10	17
	Subject stand	Herschel Building	Ground Floor Foyer	9.00–3.00	17
Politics and International Relations (including Philosophy, Politics and Economics)					
Politics and International Relations (including Philosophy, Politics and Economics)	Subject talk	The Henry Daysh Building	Ground Floor, Room G.13	Saturday: 9.30–10.20	32
			1st Floor, Room 1.02	Friday and Saturday: 11.00–11.50 1.30–2.20	
	Subject stand	The Henry Daysh Building	1st Floor	9.00–3.00	32

Subject	Activity	Building	Room	Time(s)	Map ref
Psychology and Cognitive Science					
Psychology and Cognitive Science	Subject talk	Dame Margaret Barbour Building	Ground Floor, Lecture Theatre G.01	11.00–11.45 2.00–2.45	110
	Subject stand	Dame Margaret Barbour Building	Ground Floor Foyer	9.00–3.00	110
Sociology					
Sociology	Subject talk	The Henry Daysh Building	6th Floor, Room 6.16	10.00–10.50 12.30–1.20	32
	Subject stand	The Henry Daysh Building	1st Floor	9.00–3.00	32
Speech and Language Sciences					
Speech and Language Sciences	Subject talk	Armstrong Building	2nd Floor, Room 2.16	11.10–12.00	22
	Subject stand	Armstrong Building	1st Floor	9.00–3.00	22
Sport and Exercise Science					
Sport and Exercise Science	Subject talk	Dame Margaret Barbour Building	Ground Floor, Lecture Theatre G.01	12.00–12.45	110
	Tour of facilities	Dame Margaret Barbour Building	Meet at subject stand	11.30–12.00 12.45–1.30	110
	Subject stand	Dame Margaret Barbour Building	Ground Floor Foyer	9.00–3.00	110



SEE WHERE YOU COULD LIVE

From traditional university rooms to modern city centre apartments - this is where you'll experience student life, make new friends, and where you'll start making your dreams a reality.

We have a range of accommodation for you to view, all within easy reach of the campus and city centre.

You can visit the accommodation sites anytime between 9.00-3.30, where our friendly staff and students will be waiting to welcome you and give you a tour of a flat and room. Allow up to 30 minutes to look around each of the residences.

For information on our full suite of residences see our Accommodation Guide in your welcome pack.



GETTING THERE



Walking...

You can easily walk to all of our accommodation - see the event map on **page 27** or look out for our Student Ambassadors to help point you in the right direction.



Shuttle...

You can make use of our shuttle bus service from the information point outside the Student Experience Hub in the Hadrian Building (**map ref 4**), to visit The View, Wellington St Plaza and Verde. Buses leave approximately every 15 minutes and will bring you back from the residence if you prefer not to walk.



Visitors with mobility issues...

If any of your party is a wheelchair user or has walking difficulties, please let a member of staff know. We can arrange for a taxi to take you to the residences you would like to visit.

ACCOMMODATION AVAILABLE TO VIEW TODAY

KEY En suite options Studio options Accessible Self-catered options Washbasin options



BERNICIA

This accommodation is in a prime location just a minute's walk from central campus with restaurants and cafés on your doorstep. It offers en suite rooms, communal social spaces, free bike storage and on-site laundrette.

Walking distance from central campus*
1 minute

Map ref
12

Room type available



Weekly rent**
From £190.05



KENSINGTON TERRACE

A selection of 10 beautifully converted town houses conveniently located near the centre of campus. With en suite, premium en suite or studio rooms available and on-site laundrette and bike storage; Kensington Terrace is in a prime location to begin your student journey.

Walking distance from central campus*
5 minutes

Map ref
46

Room type available



Weekly rent**
From £197.40



NEWGATE COURT

This stylish accommodation is situated in the heart of the city centre, close to all shops, cafés and attractions. Offering modern en suite bedrooms, a large communal social space equipped with pool table, table tennis and cinema room. You'll also benefit from bike storage, gym and on-site laundrette.

Walking distance from central campus*
15 minutes

Map ref
84

Room type available



Weekly rent**
From £205.25



PARK TERRACE

Provides en suite or premium en suite bedrooms in self-catered flats varying in size from six to eleven bedrooms. Each flat has a contemporary kitchen and comfortable common area with flat-screen TV. Just a stone's throw away from the centre of campus, this accommodation is in a great location.

Walking distance from central campus*
6 minutes

Map ref
45

Room type available



Weekly rent**
From £197.40

* Distance from the Students' Union (map ref 5).

**Prices shown are for the academic year 2026/27. Please note, prices may change for future academic years.



PARK VIEW

This accommodation offers modern, spacious flats. The high-quality facilities include two on-site laundries, a central social space with gaming area, and dedicated study zones.

Walking distance from central campus*
14 minutes

Map ref
73

Room type available



Weekly rent**
From £197.40



THE VIEW

This site offers top of the range en suite rooms, and each flat has a communal open-plan lounge/kitchen. Facilities include large common room, games room, laundrette and bike storage. A small supermarket is conveniently located on the ground floor of the building. **Shuttle bus available, see page 22.**

Walking distance from central campus*
13 minutes

Map ref
114

Room type available



Weekly rent**
From £197.00

NEED AN ACCESSIBLE ROOM?

We have one open for viewings at Park View – just let us know when you arrive, and we can show you around.



VERDE

This accommodation offers top of the range en suite rooms in the city centre, with facilities such as a cinema room, gym, on-site laundrette and bike storage. **Shuttle bus available, see page 22.**

Walking distance from central campus*
13 minutes

Map ref
113

Room type available



Weekly rent**
From £199.00



WELLINGTON ST PLAZA

This site offers spacious rooms with stylish state-of-the-art décor and furnishings, and has a small supermarket conveniently located right on its doorstep. The shared social space includes a games console and pool table. **Shuttle bus available, see page 22.**

Walking distance from central campus*
14 minutes

Map ref
56

Room type available



Weekly rent**
From £178.65



WINDSOR TERRACE

Recently refreshed and situated next to the main University library, Windsor Terrace offers great value self-catered accommodation in a convenient location. Each flat has an open-plan kitchen/living room area with washbasin or en suite room options available.

Walking distance from central campus*
6 minutes

Map ref
42-44

Room type available



Weekly rent**
From £142.80

HAVE ANY QUESTIONS ABOUT OUR ACCOMMODATION?

Visit our team at the Student Experience Hub in the Hadrian Building (**map ref 4**). You can also find out more at the Living in Newcastle session (**see page 8**).

* Distance from the Students' Union (map ref 5).

**Prices shown are for the academic year 2026/27. Please note, prices may change for future academic years.

WHERE TO EAT ON CAMPUS



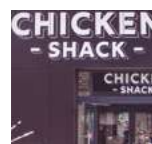
The Grand Map ref 8
7.30–4.00 (Friday)
8.00–4.00 (Saturday)
The Grand offers a cosy café atmosphere with drinks and delicious sandwiches.



Courtyard Map ref 25
8.00–3.30 (Friday)
9.00–3.00 (Saturday)
Newly refurbished and located in the Old Library Building, with plenty of hot meals on offer, you'll be spoilt for choice.



Bites Map ref 63
8.00–3.00 (Friday)
9.00–3.00 (Saturday)
Located in the Dental School, Bites offers a wonderful selection of sandwiches, paninis, pastries, jacket potatoes and snacks.



Chicken Shack Map ref 4
11.00–3.00
Located opposite Luther's Bar in the Hadrian Building, you can enjoy a variety of halal chicken burgers, wraps, fries and more.



Philip Robinson Library Map ref 35
8.00–3.00 (Friday)
10.00–3.00 (Saturday)
Located in the University's main campus library, serving a selection of drinks, sandwiches, and sweet treats.



The Henry Daysh Café Map ref 32
8.00–4.00 (Friday)
8.30–3.00 (Saturday)
Enjoy a range of hot drinks, sandwiches and treats, with plenty of vegetarian and plant-based options.

Grab and go

Hot drinks are available from our coffee cart in The Frederick Douglass Centre (**map ref 106**) at Newcastle Helix.



Sports Centre Café Map ref 70
9.30–2.30
Located in the Sports Centre serving hot drinks, sandwiches and snacks. After 2.30 a self-service micro market and coffee machine are available.



Street Kitchen Map ref 10
11.30–2.00
Located in the Student Forum, offering a range of delicious, authentic street food.



Urban Map ref 105
9.00–2.30
Located in the Urban Sciences Building at Newcastle Helix. Enjoy a large selection of barista coffees, paninis and snacks.



Lucca Pizza Map ref 60
11.00–3.00
Located outside the Medical School serving a selection of pizzas.



Catalyst Map ref 107
8.30–4.00 (Friday only)
Located in The Catalyst at Newcastle Helix offering a range of hot drinks and snacks.



Stephenson Coffee Cart Map ref 50
8.30–2.30
Located in the Stephenson Building offering a range of hot drinks.



Coffee Trailer Map ref 10
9.00–2.00
Located in the Student Forum offering a range of hot drinks.



KEY

- CT CAMPUS TOURS (STUDENT FORUM)
- IP INFORMATION POINT
- WD WELCOME DESK (KING'S GATE LEVEL 1)
- 114 MAP REFERENCE
- 🍴 WHERE TO EAT
- GT GENERAL TALKS
- SH STUDENT EXPERIENCE HUB (HADRIAN BUILDING)
- 🏠 STUDENT ACCOMMODATION

For information regarding building accessible entrances, accessible lifts and public toilets please refer to the University map in your welcome pack.

USEFUL INFORMATION

In case of emergency

Contact the nearest member of staff. In the event of a fire alarm, please vacate the building immediately by the nearest exit.

Photography and filming

Some photography and filming will be taking place on the day to appear in future Newcastle University printed and digital publicity. Please let the photographer or a member of staff know if you do not want to have your photo taken, or be filmed.

Meeting point and lost property

If you become separated from your party please meet at the Campus tours helpdesk (Student Forum, map ref 10). For lost property visit the Student Experience Hub (Hadrian Building, map ref 4).

Further information

For further information, please contact:
Newcastle University
Open Day Team
Email: open.day@ncl.ac.uk
ncl.ac.uk/openday

Illustrative material has been provided by C Bishop; Catering Services; J Donoghue; Elemental Photography; J Johnston; Unite.

Details included in this programme are correct at the time of printing (June 2026). The most up-to-date and detailed source of information at any time is the undergraduate website ncl.ac.uk/undergraduate

All sessions are subject to change. Full details of the University's terms and conditions, including reference to all relevant policies, procedures, regulations and information provision are available at ncl.ac.uk/student-welcome/student-contract

Please help keep our campus a smoke-free zone.

Designed by Altogether. Printed by Statex.

© Newcastle University, 2026. The University of Newcastle upon Tyne trading as Newcastle University.

 [newcastleuni](https://www.instagram.com/newcastleuni)

 [newcastleuni](https://www.tiktok.com/newcastleuni)

 [newcastleuni](https://www.youtube.com/newcastleuni)

 [school/newcastle-university](https://www.linkedin.com/school/newcastle-university)

 [newcastleuniversity](https://www.facebook.com/newcastleuniversity)

#nclvisit



**COMPLETE OUR SURVEY AND BE ENTERED
INTO A PRIZE DRAW TO WIN ONE OF FIVE
£20 GREGGS GIFT CARDS!**

(Terms and conditions apply)